

Saratoga County Community Health Needs Assessment

Sociodemographic Indicators

Executive Summary-Saratoga County

- Saratoga County's population density of 274.3 pop./square mile was the same as that of the Capital Region (274.7).
- Saratoga had a similar median age as the Capital Region(S-41.2; CR-40.2).
- North East neighborhood had the highest pop. 0-14 yrs. of age at 21.5% (S-18.2%); Burnt Hills/Galway had the highest pop. 65+ yrs. of age at 19.6% (S-14.2%).
- Saratoga had the lowest % Nonwhite pop. (S-5.7%; CR-14.9%), and the lowest % Hispanic pop. (S-2.6%; CR-4.4%) of all CR counties .
- Clifton Park West (9.1%) had the largest Nonwhite pop., as well as the largest Hispanic pop. (3.5%).

Executive Summary-Saratoga County

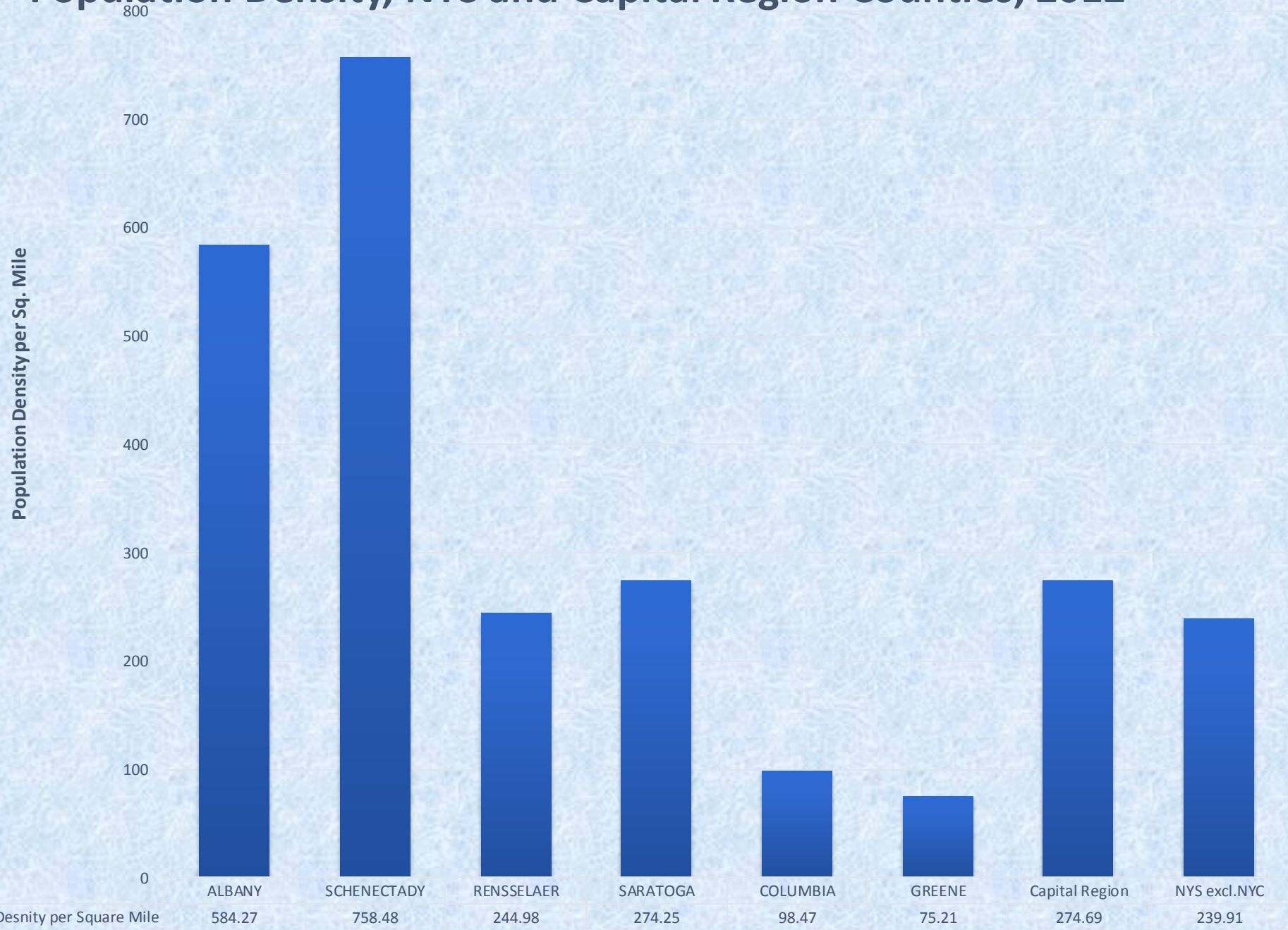
- Saratoga had a lowest % of the pop. < 100% FPL of the CR counties (S-6.5%; CR-11.3%). It also had the highest Median Household Income (\$69,826) of CR counties (CR-\$60,722).
- North West (13.2%) and South Glens Falls (8.2%) had the highest neighborhood poverty rates.
- Saratoga had lowest % pop. with < HS education (S-6.6%; CR-8.8%) and the 2nd highest % pop. with college of greater education (S-37.1%; CR-33.3%) then the CR counties.
- North West had the highest % of pop. with < HS education (10.9%).
- Saratoga had a lower % of pop. who spoke English “less than very well” than the CR (S-1.8%; CR-2.9%). Clifton Park West had the highest rate (4.1%).
- Saratoga had a lowest % of pop. with a disability compared to CR counties (S-10.4%; CR-11.8%); Saratoga Springs (12.6%) had the highest rate of disabilities.

**Selected Sociodemographic Indicators, Saratoga County, Capital Region, and
New York State, ACS 2009-2013**

	Saratoga County		Capital Region	NYS
	#	%	%	%
Population	221,169			
% <5 years of age	11,871	5.4	5.3	6.0
% 5-14 years of age	28,259	12.8	11.7	12.1
% 15-19 years of age	14,308	6.5	7.2	6.8
% 65-74 years of age	18,014	8.1	7.8	7.3
% 75+ years of age	13,524	6.1	7.0	6.5
Median Age		41.2	40.2	38.1
% Non-white	12,562	5.7	14.9	34.4
% Hispanic	5,706	2.6	4.4	17.9
% <100% FPL	14,192	6.5	11.3	15.3
% < 18 yrs. < 100% FPL	3,589	7.4	15.5	21.7
Median Household Income		\$69,826	\$60,722	\$58,003
% speak English "< very well"	3,767	1.8	2.9	13.4
% 25+ yrs. < HS education	4,766	13.6	8.8	14.8
% with Disability	10,170	6.6	11.8	10.9

Source: Bureau of Census, American Community Survey (ACS), 2009-2013

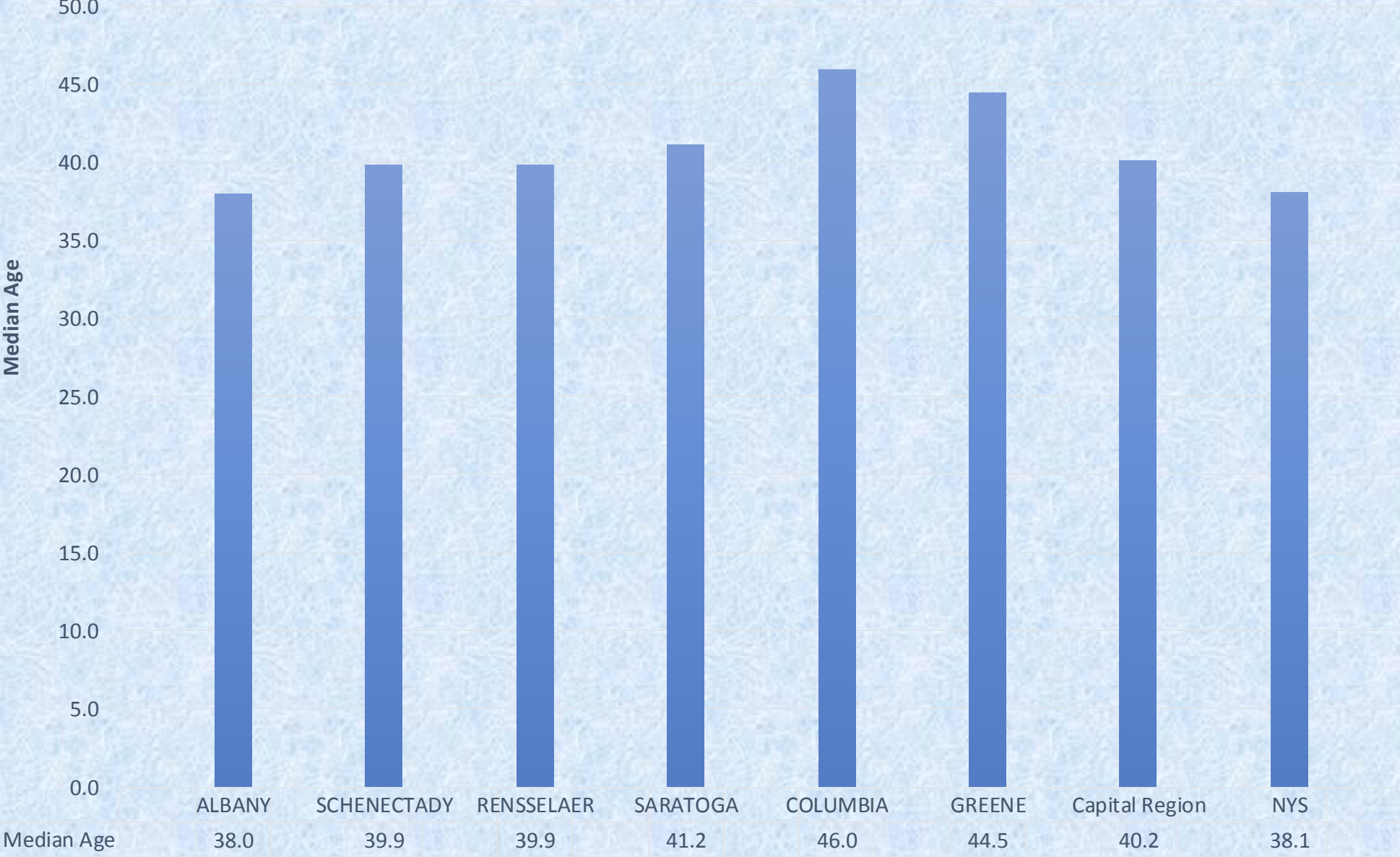
Population Density, NYS and Capital Region Counties, 2012



Population by Age, Saratoga County, Capital Region, and NYS, ACS 2009-2013

Age	Saratoga County		Capital Region	NYS
	#	%	%	%
< 5 years	11,871	5.4	5.3	6.0
5-14 years	28,259	12.8	11.7	12.1
15-19 years	14,308	6.5	7.2	6.8
20-44 years	68,940	31.2	31.2	34.5
45-64 years	66,253	30.0	28.9	25.8
65-74 years	18,014	8.1	7.8	7.3
75+ years	13,524	6.1	7.0	6.5
Total	221,169	100.0	100.0	100.0

Median Age, NYS and Capital Region Counties, ACS 2009-2013



Saratoga County High Need Neighborhoods

% of Population 0-14 Years (18.2%)

- North East-21.5%
- Burnt Hills/Galway-20.1%
- Waterford/Mechanicville-19.2%

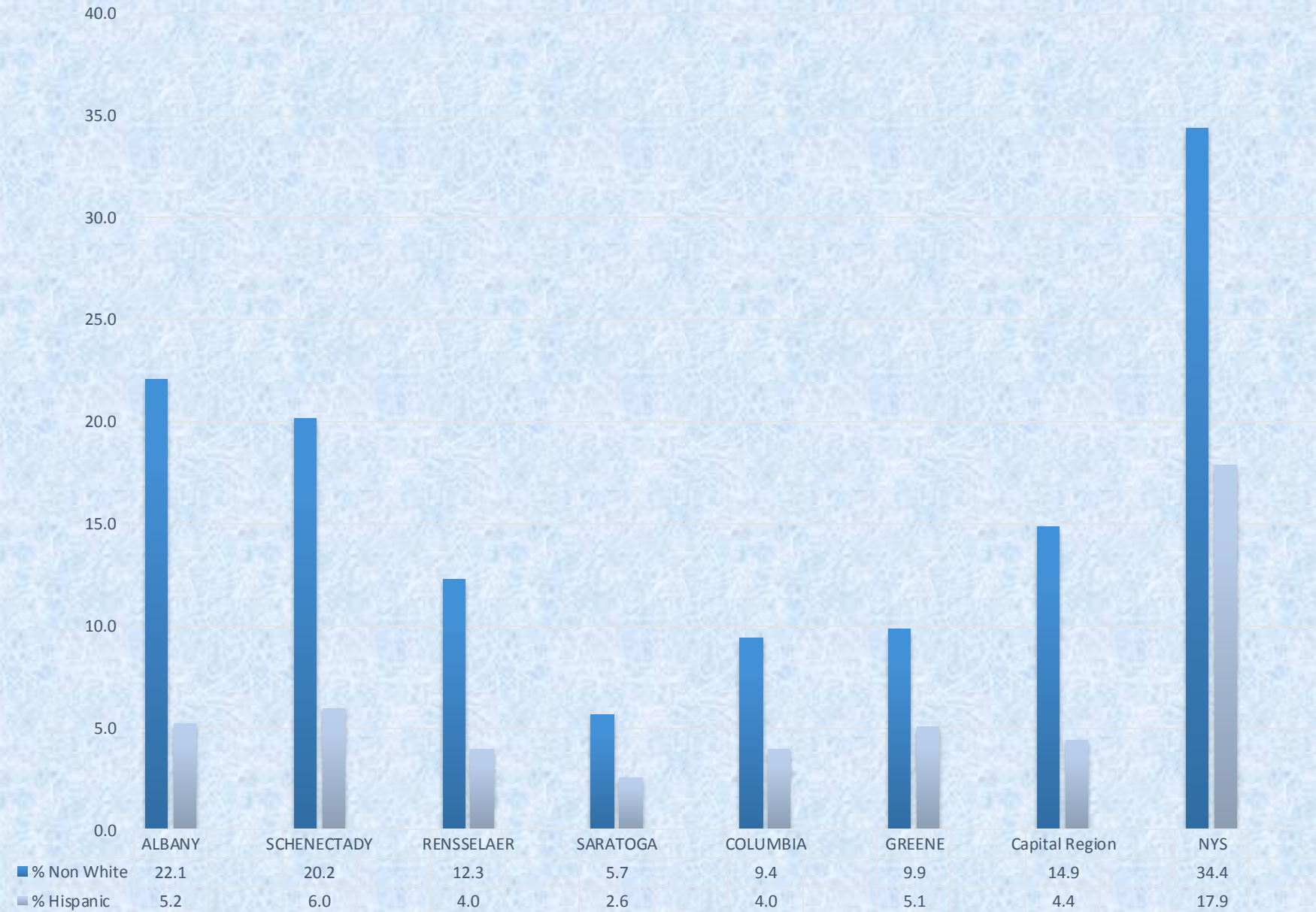
% of Population 65+ Years (14.2%)

- Burnt Hills/Galway-19.6%
- Saratoga Springs -17.3%
- South Glens Falls -15.2%

**Population by Race and Ethnicity, Saratoga County, Capital Region, and New York State,
ACS 2009-2013**

	Saratoga County		Capital Region	NYS
Race	#	%	%	%
White	208,607	94.3	85.1	65.6
Black	3,469	1.6	7.7	15.6
Asian	4,289	1.9	3.2	7.6
Other	4,804	2.1	4.0	11.2
Total	221,169	100.0	100.0	100.0
Ethnicity				
Hispanic/Latino (any race)	5,706	2.6	4.4	17.9

Population by Race/Ethnicity, NYS and Capital Region Counties, ACS 2009-2013



Saratoga County High Need Neighborhoods

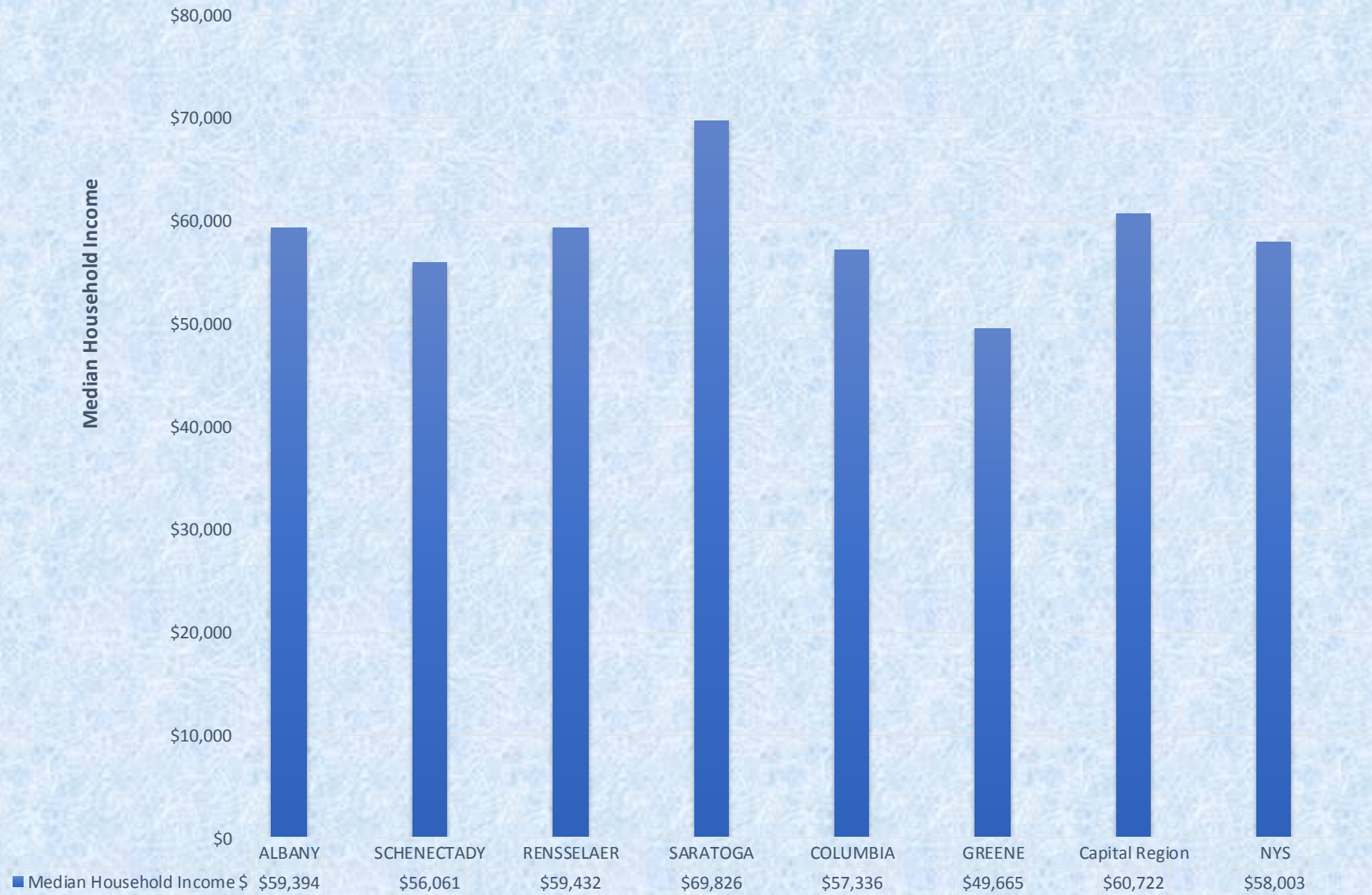
% of Population Non-White (5.7%)

- Clifton Park West-9.1%
- North West-7.4%
- Saratoga Springs-6.3%

% of Population Hispanic/Latino (2.6%)

- Clifton Park West-3.5%
- Saratoga Springs-3.1%
- North East-2.7%

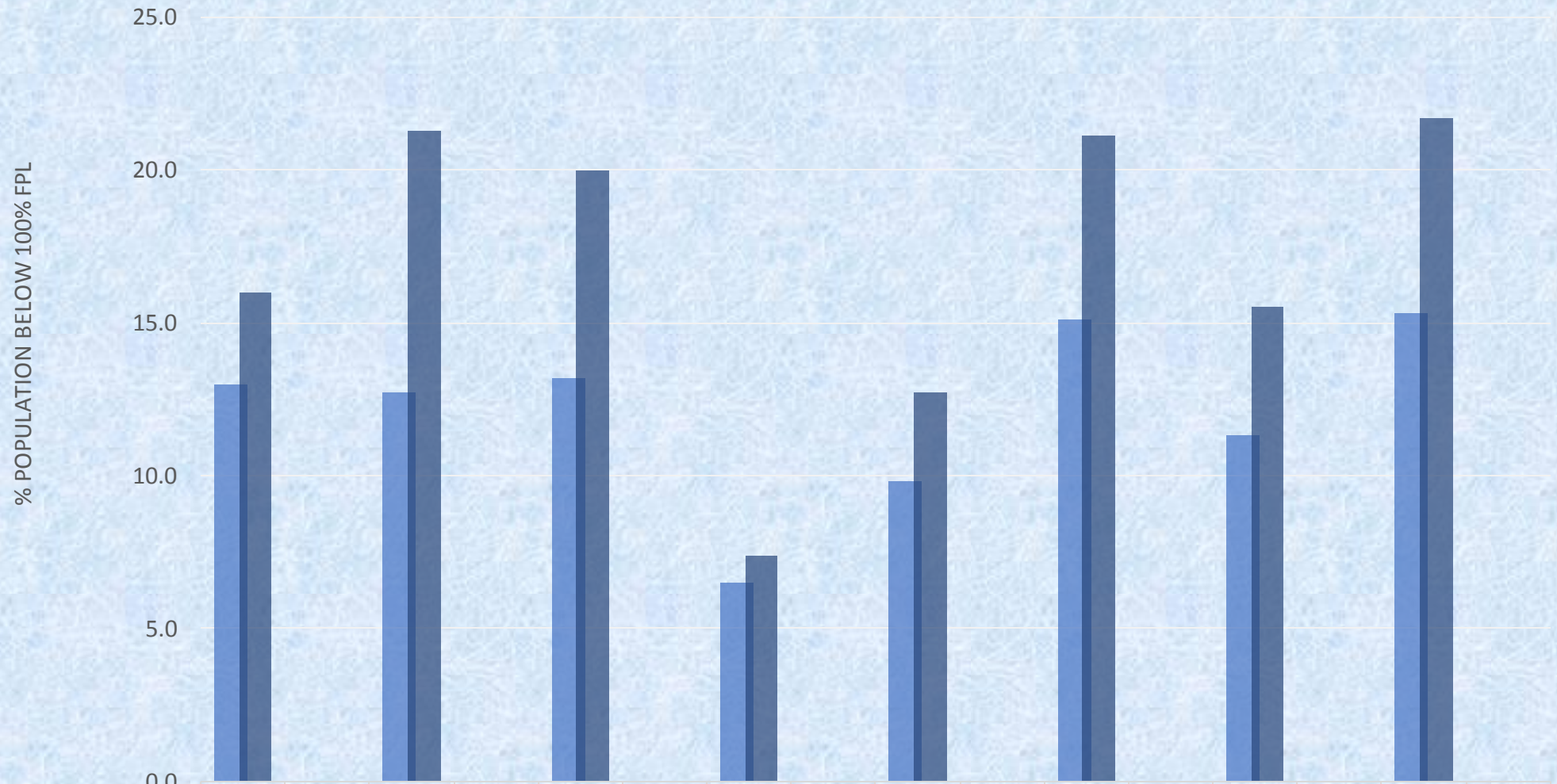
Median Household Income NYS and Capital Region Counties, ACS 2009-2013



**Population by Federal Poverty Level, Saratoga County, Capital Region,
and New York State, ACS 2009-2013**

	Saratoga County		Capital Region	NYS
Federal Poverty Level	#	%	%	%
<50%	5,794	2.7	5.0	6.8
<100%	14,192	6.5	11.3	15.3
<150%	25,242	11.6	18.1	24.0
<200%	39,441	18.2	25.2	32.1
Total pop. with known Pov. Level	216,906			
Pop. <18 years				
<100% Federal PovertyLevel	3,589	7.4	15.5	21.7
Total pop. <18 years	48,383			

Percent Below Poverty, Total Population and < 18 Year Population, NYS and Capital Region Counties, ACS 2009-2013



	ALBANY	SCHENECTADY	RENSSELAER	SARATOGA	COLUMBIA	GREENE	Capital Region	NYS
■ % below 100% Poverty	13.0	12.7	13.2	6.5	9.8	15.1	11.3	15.3
■ % < 18 years pop. below 100% Poverty	16.0	21.3	20.0	7.4	12.7	21.1	15.5	21.7

Saratoga County High Need Neighborhoods

% of Population <100% FPL (6.5%)

- North West-13.2%
- South Glens Falls-8.2%
- Waterford/Mechanicville-7.9%

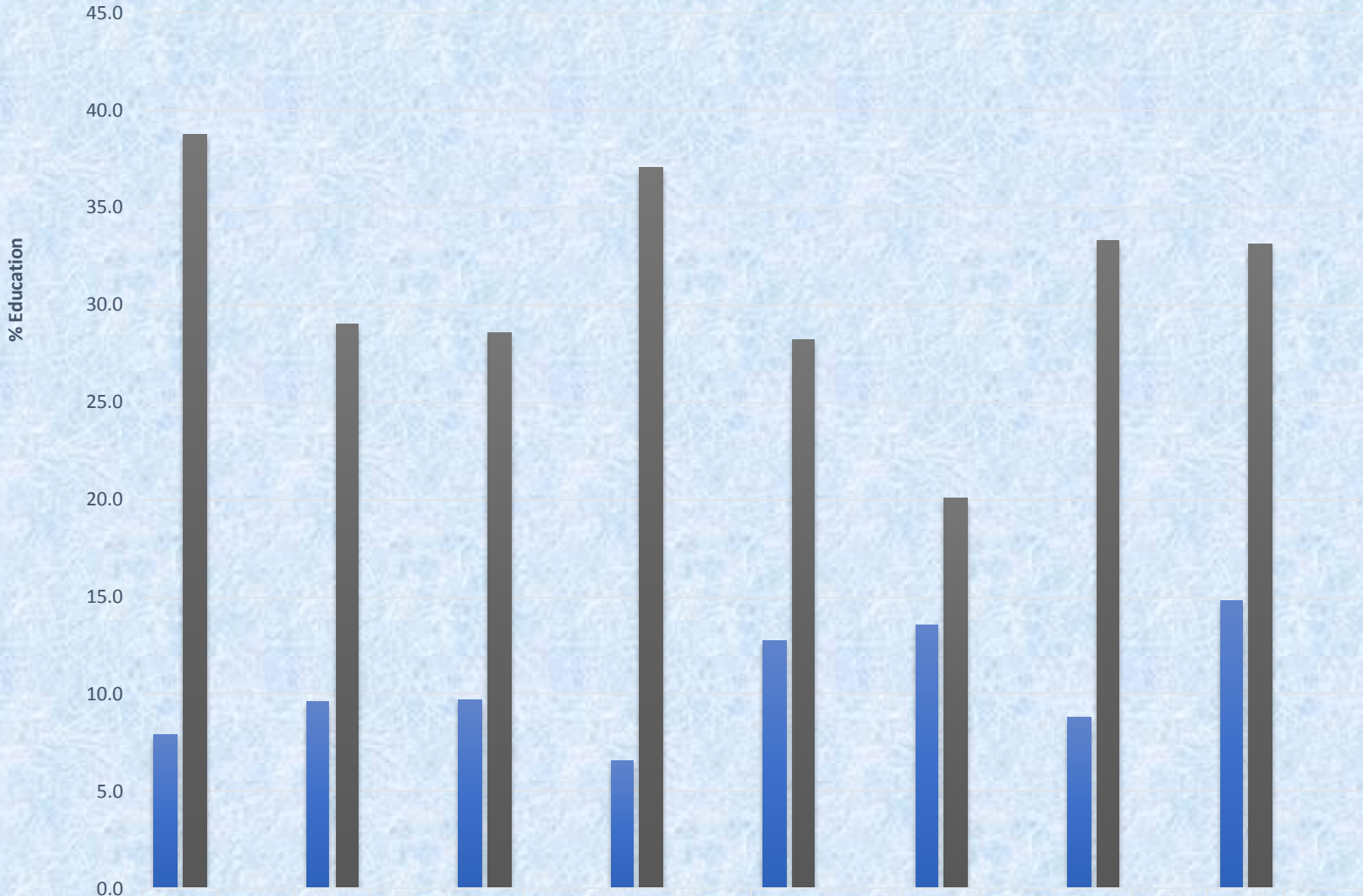
% of Population <200% FPL (18.2%)

- North West-26.5%
- South Glens Falls-23.7%
- Ballston Spa-20.9%

**Educational Attainment in Population 25+ Years of Age,
Saratoga County, Capital Region, and New York State,
ACS 2009-2013**

	Saratoga County		Capital Region	NYS
Education	#	%	%	%
< High School	10,170	6.6	8.8	14.8
Bachelor Degree or Higher	57,169	37.1	33.3	33.2
Total 25+ Years	154,093			

Education Attainment in Population 25+ Years of Age, NYS and Capital Region Counties, ACS 2009-2013



■ % less than High School	7.9	9.6	9.7	6.6	12.8	13.6	8.8	14.8
■ % Batchelors Degree and higher	38.8	29.0	28.6	37.1	28.2	20.1	33.3	33.2

Saratoga County High Need Neighborhoods

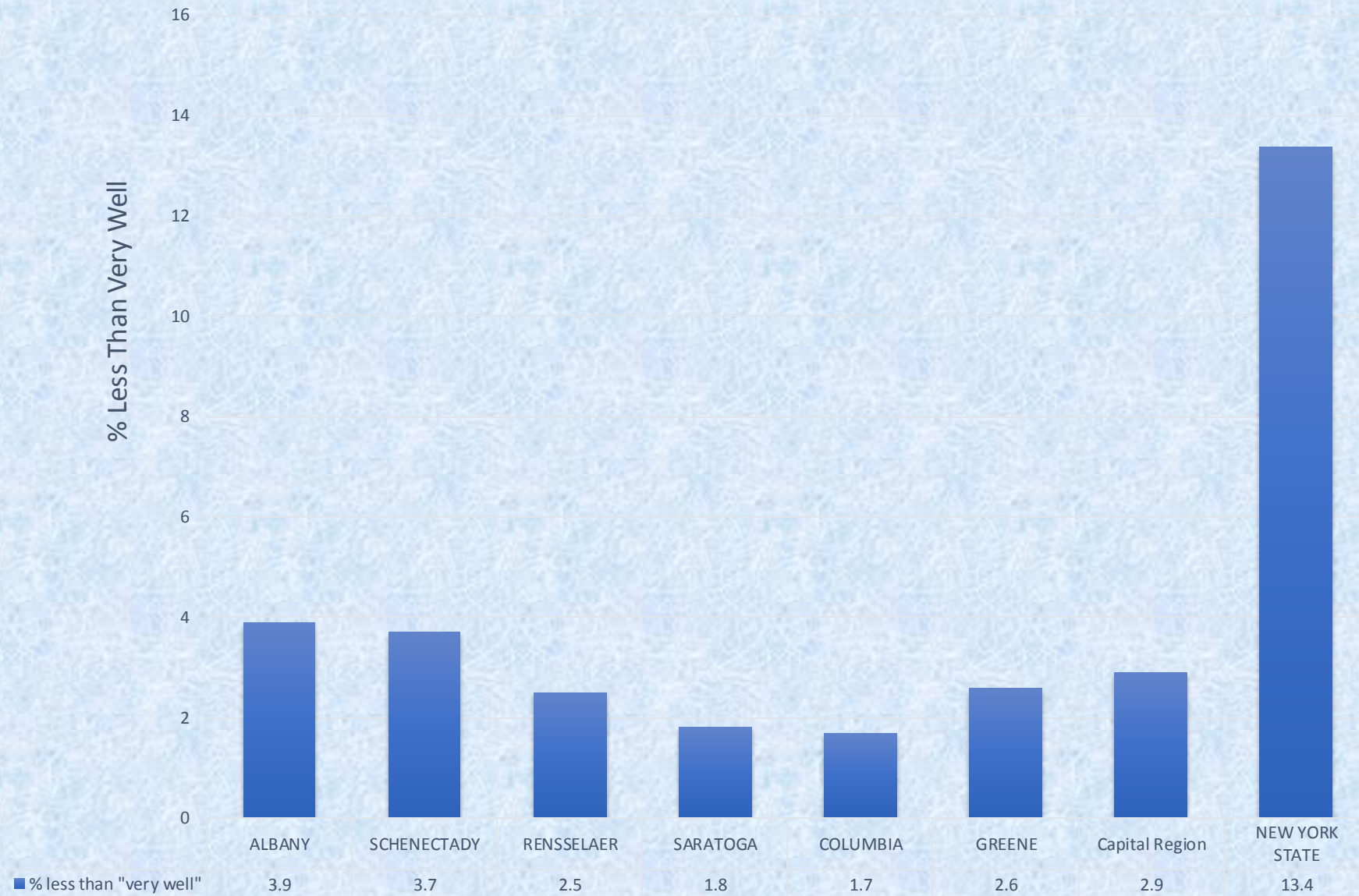
% < High School Education (6.6%)

- **North West-10.9%**
- **South Glens Falls-7.9%**
- **Waterford/Mechanicville-7.5%**

**Language spoken at Home and Speak English Less Than Very Well
in Population 5+ Years and Older, Saratoga County, Capital Region,
and New York State, ACS 2009-2013**

	Saratoga County		Capital Region	NYS
Language	#	%	%	%
Language other than English at Home	13,186	6.3	8.9	29.9
Speak English Less Than Very Well	3,767	1.8	2.9	13.4
Total 5+ Years	209,298			

Percent of Population that Speaks English "Less Than Very Well", NYS and Capital Region Counties, ACS 2009-2013



Saratoga County High Need Neighborhoods

**% Language at Home Other than English
(6.3%)**

- **Clifton Park West-11.9%**
- **Saratoga Springs-6.6%**
- **Waterford/Mechanicville-5.8%**

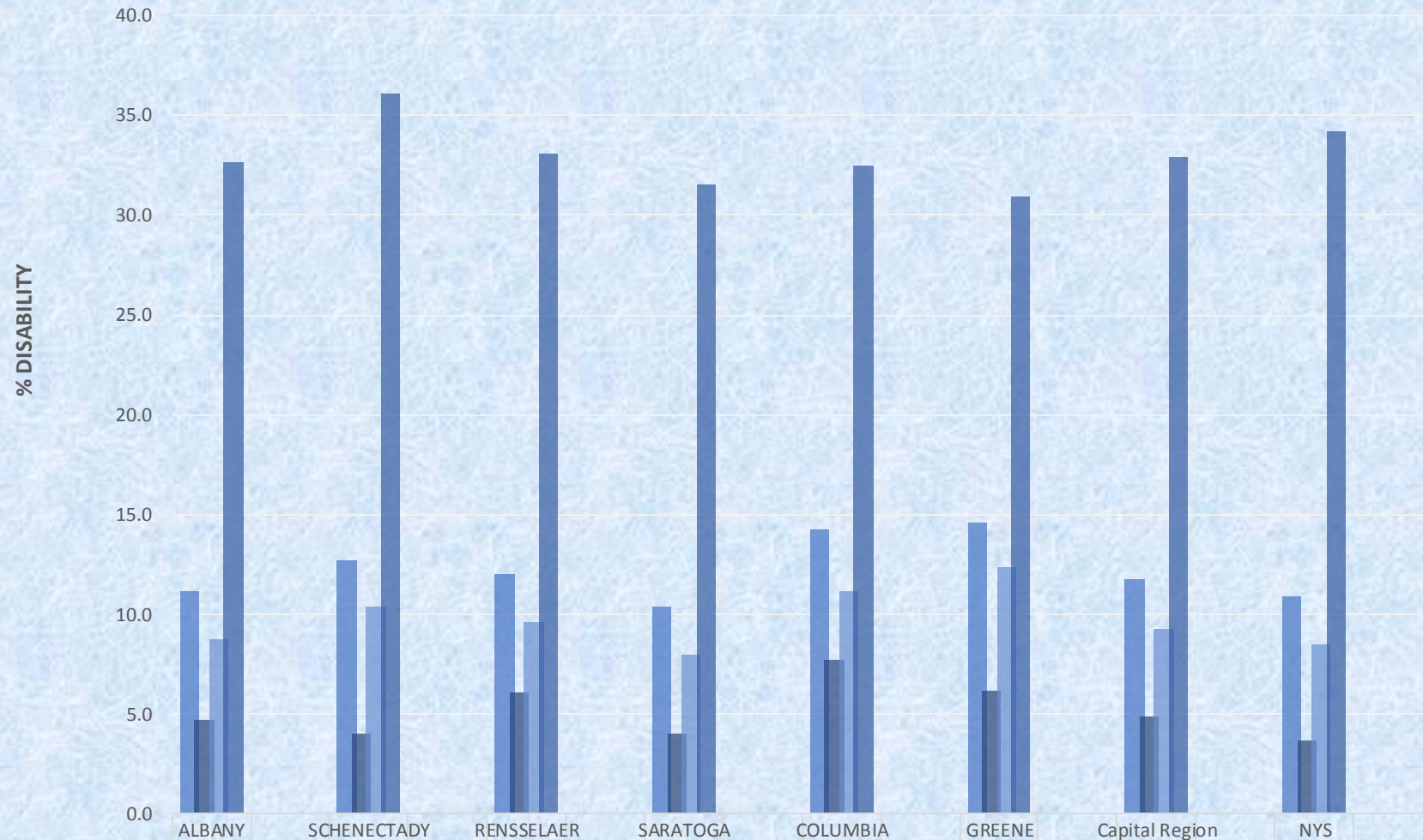
**% Speaks English Less than Very Well
(1.8%)**

- **Clifton Park West-4.1%**
- **Waterford/Mechanicville-1.9%**
- **Saratoga Springs-1.6%**

**Population with Disabilities, Saratoga County, Capital Region,
and New York State, ACS 2009-2013**

	Saratoga County		Capital Region	NYS
Disability by Age	#	%	%	%
<18 years	1,969	4.0	4.9	3.7
18-64 years	11,097	8.0	9.3	8.5
65+ years	9,660	31.5	32.9	34.2
Total-All ages	22,726	10.4	11.8	10.9
Total Pop.	217,839			

Percent of Population with Disability by Age, NYS and Capital Region Counties, ACS 2009-2013



% of Total Pop. with Disability	11.2	12.7	12.0	10.4	14.3	14.6	11.8	10.9
% Pop. < 18 Years with Disability	4.7	4.0	6.1	4.0	7.7	6.2	4.9	3.7
% Pop. 18-64 Years with Disability	8.8	10.4	9.6	8.0	11.2	12.4	9.3	8.5
% Pop. 65+ Years with Disability	32.6	36.1	33.1	31.5	32.5	30.9	32.9	34.2

Saratoga County High Need Neighborhoods

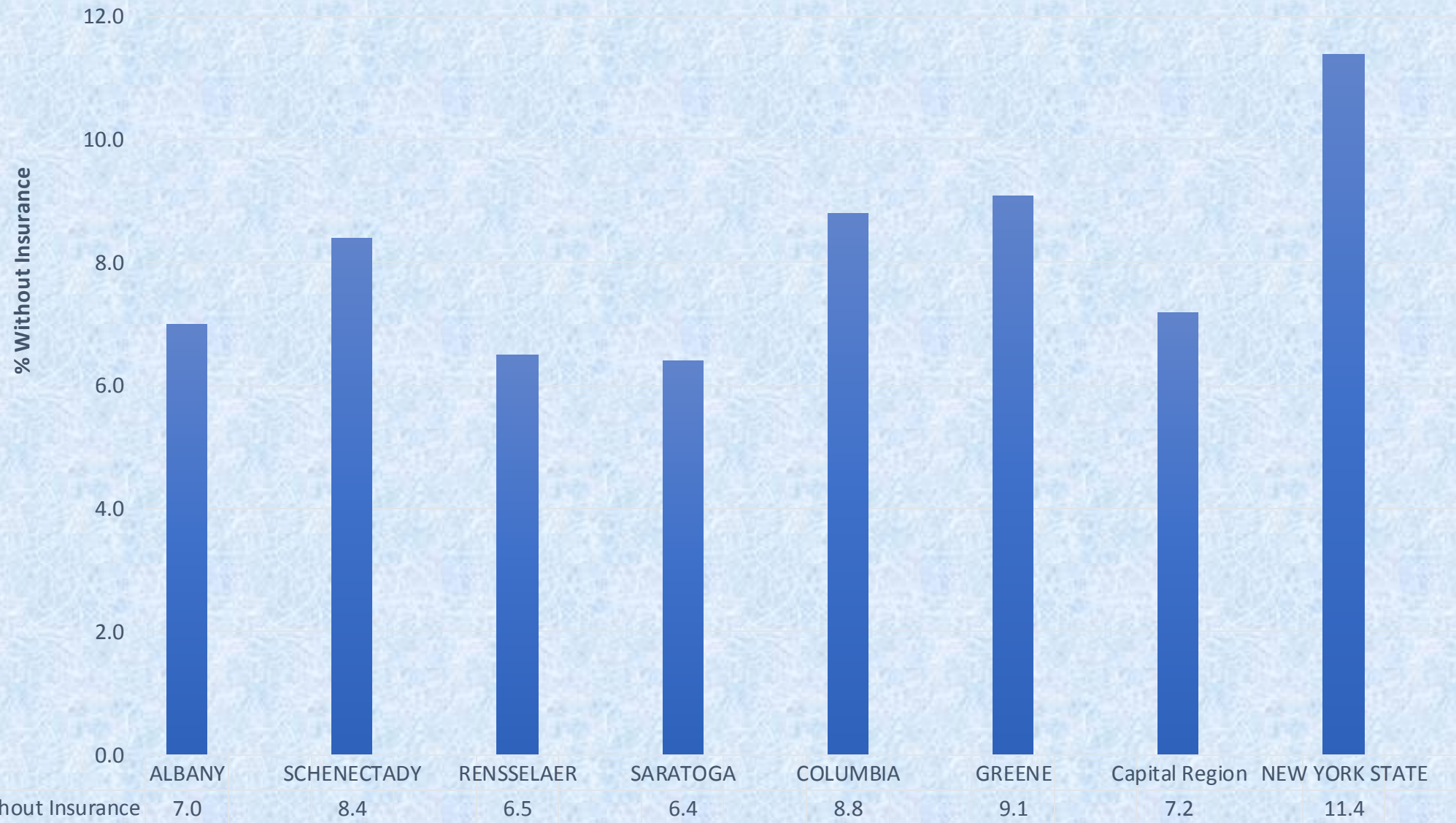
% Population with a Disability (10.4%)

- **Saratoga Springs-12.6%**
- **North West-12.1%**
- **South Glens Falls-12.0%**

Percent Population without Health Insurance, Saratoga County,
Capital Region, and New York State, ACS 2009-2013

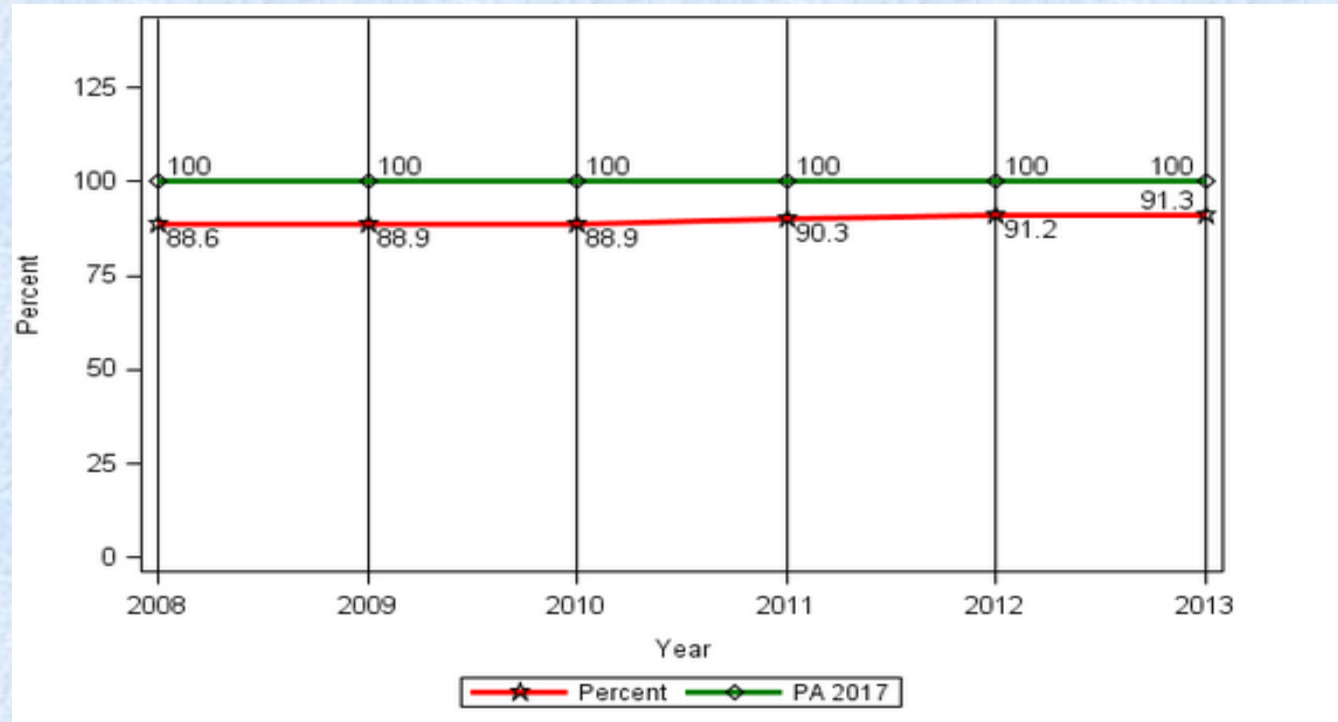
	Saratoga County		Capital Region	NYS
Health Insurance	#	%	%	%
Pop. without Health Insurance	13,928	6.4	7.2	11.1
Total population	217,839			

Percent of Population Without Health Insurance, NYS and Capital Region Counties, ACS 2009-2013



Saratoga County, % of Adults (Aged 18-64) with Health Insurance, 2008-2013 and Prevention Agenda 2017 Objective

US Census Bureau-Small Area Health Insurance Estimates as of March 2015



Saratoga County High Need Neighborhoods

% Population Without Health Insurance (6.4%)

- **South Glens Falls-8.2%**
- **Waterford/Mechanicville-7.4%**
- **Ballston Spa-7.2%**

Sociodemographic Summary

- Saratoga County's population density of 274.3 pop./square mile was the same as that of the Capital Region (274.7).
- Saratoga had an older population compared to the Capital Region. The County's median age of 41.2 yrs. was slightly higher than the Capital Region (40.2 yrs.).
- Of Saratoga neighborhoods, North East had the largest population 0-14 years of age (21.5%), while Burnt Hills/Galway had the largest population 65+ years of age (19.6%).
- Saratoga had lower Non-White (5.7%) and Hispanic (2.6%) populations compared to the Capital Region (14.9% and 4.4% respectively). Clifton Park West had the largest Non-White (9.1%) and Hispanic (3.5%) populations of the Saratoga County neighborhoods.

Sociodemographic Summary

- Saratoga's population below 100% FPL of 6.5% was the lowest in the Capital Region (11.3%); the poverty rate for the population <18 years of 7.4% was also the lowest in the Capital Region (15.5%). Saratoga's Median Household Income of \$69,826 was also the highest in the Capital Region (\$60,722).
- North West had the highest neighborhood rates for population < 100% FPL (13.2%) and <200% FPL (26.5%).
- Saratoga had the lowest percent of the population with < high school education of 6.6% in the Capital Region (8.8%). North West neighborhood had the highest rate of 10.9%.

Sociodemographic Summary

- Only 1.8% of Saratoga County residents spoke English “Less than Very Well”, lower than then Capital Region rate of 2.9%. Clifton Park West (4.1%) neighborhood had the highest county rate.
- The percent of the population living with a disability in Saratoga of 10.4% was the lowest in the Capital Region (11.8%). Saratoga Springs (12.6%) had the highest rate of neighborhoods in Saratoga County.

Sociodemographic Summary

- Saratoga's percent of population without Health Insurance of 6.4% was the lowest in the Capital Region (7.2%). South Glens Falls (8.2%) and Waterford/Mechanicville(7.4%) neighborhoods had the highest county neighborhood rates.
- Health Insurance coverage for the Saratoga County adult population (18-64 years) has increased each year from 2008 to 2013.