

## Appendix II: County-Specific Data

### Contents

Albany County .....	2
Food-Related.....	2
Housing-Related .....	4
Columbia County.....	6
Food-Related.....	6
Housing-Related .....	8
Greene County .....	10
Food-Related.....	10
Housing-Related .....	12
Rensselaer County .....	14
Food-Related.....	14
Housing-Related .....	16
Saratoga County.....	18
Food-Related.....	18
Housing-Related .....	20
Schenectady County.....	22
Food-Related.....	22
Housing-Related .....	24

## Albany County

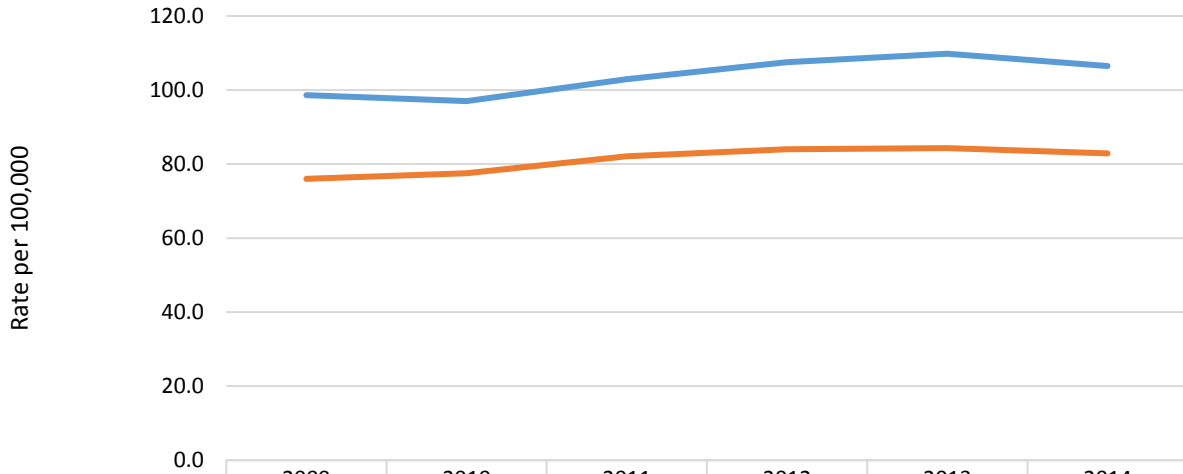
### Food-Related

#### Highlights:

- Approximately 14,500, or 37% of Albany school children were eligible for free or reduced cost lunch; lower than the NYS rate of 52%.
- Over 15,100 Albany low-income residents, or 19.3%, had low access to healthy foods; over 2.5 times higher than the NYS rate of 7.5%.
- About 40,000 Albany residents, or 13.1% were “food insecure”, similar to the NYS rate of 13.5%.
- Of the Albany “food insecure” population, 17,000 or 42%, were ineligible for assistance. This was 150% higher than the NYS rate of 27%.
- Albany’s rate of fast food restaurants of 106.5 per 100,000 was about 125% higher than the Capital Region (82.9) and NYS (86.3). Albany’s rate increased 8% from 2008-12 to 2011-15.
- Almost 14,000, or 9.5% of Albany households received SNAP benefits. This rate increased 19% from 2009 to 2014.

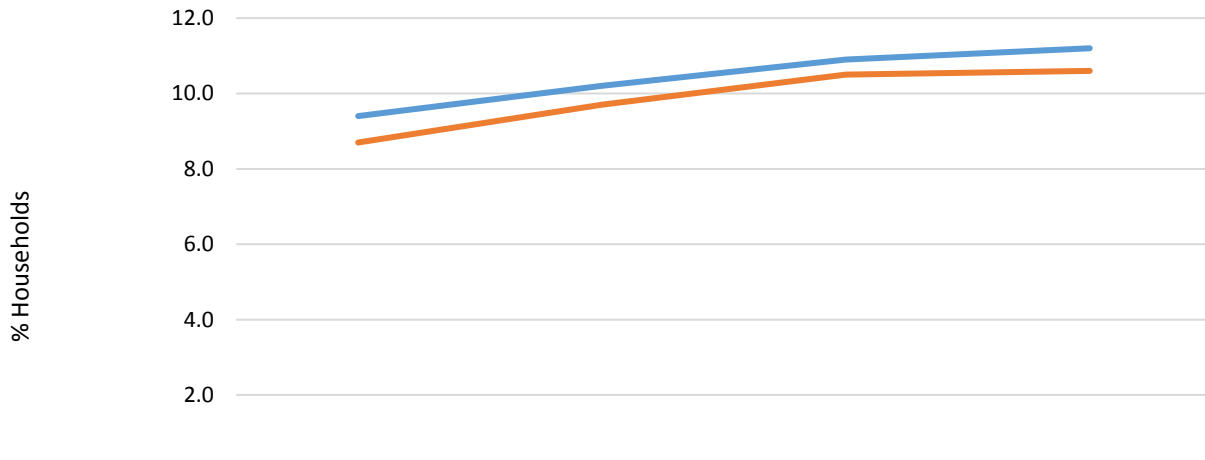
Indicator	Albany County		Capital Region		NYS
	#	Rate	#	Rate	Rate
% pop. at or Below 125% FPL (ACS 2011-15)	49,568	17.0	135,307	14.7	20.1
% pop. at or Below 185% FPL (ACS 2011-15)	72,471	24.8	210,876	22.9	30.2
% Students Eligible for Free or Reduced lunch (SRC 2015-16)	14,562	37.0	47,048	38.0	52.0
% Low-Income (<200% FPL) with Low Food Access (FARA 2015)	15,140	19.3	44,688	19.5	7.5
% pop. Who are Food Insecure (Feeding America 2014)	40,020	13.1	109,530	11.5	13.5
% Food Insecure pop. Ineligible for Assistance (Feeding America 2014)	17,000	42.0	48,200	42.0	27.0
% pop. <18 Who are Food Insecure (Feeding America 2014)	11,200	18.8	38,600	19.4	22.1
% Food Insecure pop. <18 Ineligible for Assistance (Feeding America 2014)	4,400	39.0	15,400	40.0	31.0
% Households Receiving SNAP Benefits (ACS 2011-15)	13,864	11.2	40,024	10.6	15.4
SNAP-Authorized Retailers per 1,000 SNAP Households (FNS, USDA 2016)	290	20.9	902	22.5	16.7
Fast Food Restaurants per 100,000 pop. (CBP 2014)	324	106.5	788	82.9	86.3
ACS= American Community Survey, Bureau of Census SRC= School Report Cards CBP= County Business Patterns, Bureau of Census	FARA= Food Access Research Atlas FNS, USDA= Food and Nutrition Service, U.S. Dept. of Agriculture				

**Fast Food Restaurant Rate per 100,000 population,  
Albany County and Capital Region, 2009-2014<sup>7</sup>**



	2009	2010	2011	2012	2013	2014
Albany	98.6	97.0	102.9	107.5	109.8	106.5
Capital Region	76.0	77.5	82.1	84.0	84.3	82.9

**% Households with SNAP Benefits, Albany County and Capital Region,  
ACS, 2008-12 to 2011-15<sup>7</sup>**



	2008-12	2009-13	2010-14	2011-15
Albany	9.4	10.2	10.9	11.2
Capital Region	8.7	9.7	10.5	10.6

## Housing-Related

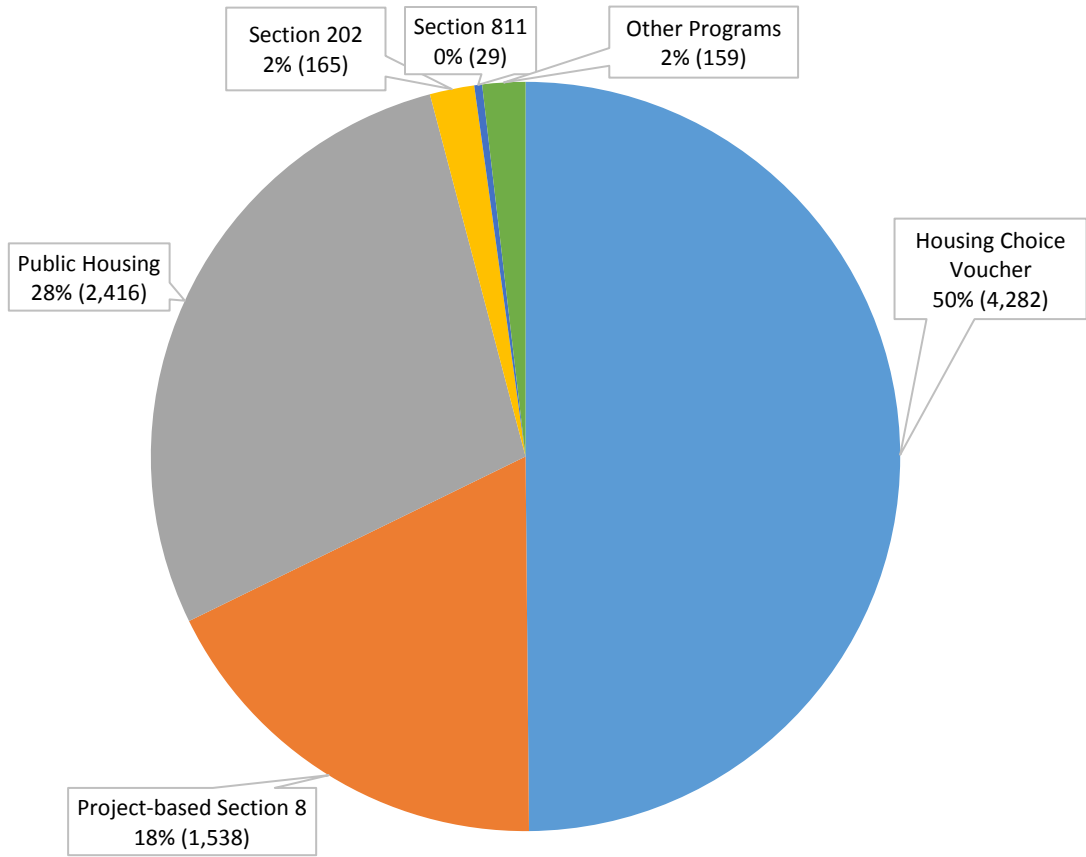
### Highlights:

- Almost 39,000, or 31.3% of Albany’s occupied housing units were considered substandard. This was lower than the NYS rate of 41.9%.
- About 40,000, or 32.2% of Albany households were considered cost-burdened, and over 18,000, or 14.9% were severely cost-burdened.
- Approximately 30%, or 42,000 of Albany’s housing units were built before 1960. This was higher than the Capital Region (26%), but lower than NYS (56%).
- Albany had 8,590 HUD-assisted housing units for a rate of 62.4 per 1,000 units. This was higher than the Capital Region (45.6), but lower than NYS (74.3).
- Of Albany’s HUD-Assisted housing units: 50% were Housing Choice Voucher; 28% Public Housing; and 18% Project-based Section 8 housing.

Indicator	Albany County		Capital Region		NYS
	#	Rate	#	Rate	Rate
% Substandard Housing (ACS 2011-15)	38,685	31.3	115,434	30.7	41.9
% Overcrowded Housing (ACS 2011-15)	1,151	1.1	3,731	1.1	7.2
% Cost-Burdened Households (>30% Income) (ACS 2011-15)	39,791	32.2	118,201	31.4	40.7
% Severe Cost-Burdened Households (>50% Income) (ACS 2011-15)	18,368	14.9	52,160	13.9	20.6
% Pre-1960 Housing Units (ACS 2011-15)	41,976	30.4	115,079	26.1	56.1
HUD-Assisted Housing Units per 1,000 Units (U.S. Dept. of Housing and Urban Development 2015)	8,590	62.4	19,996	45.6	74.3

ACS= American Community Survey, Bureau of Census

**Assisted Housing Units by HUD Program, Albany, 2015 (N=8,590)<sup>7</sup>**



## Columbia County

### Food-Related

#### Highlights:

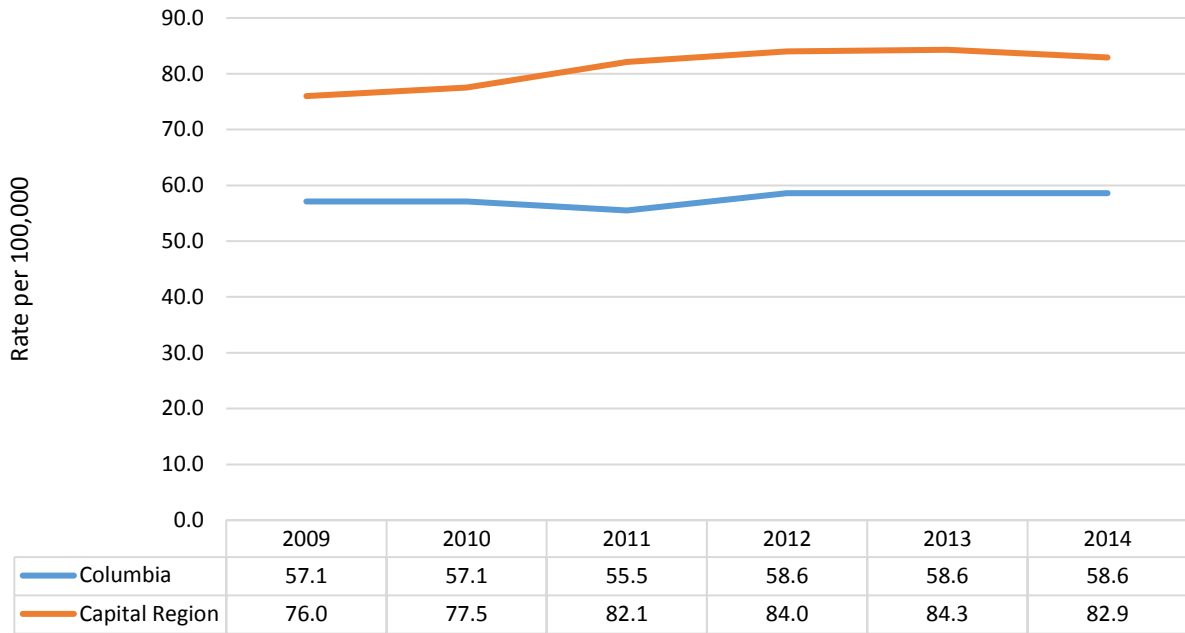
- Approximately 3,400, or 49% of Columbia school children were eligible for free or reduced cost lunch; slightly lower than the NYS rate of 52%.
- Almost 3,200 Columbia low-income residents, or 19.8%, had low access to healthy foods; 2.6 times higher than the NYS rate of 7.5%.
- About 6,400 Columbia residents, or 10.2% were “food insecure”, lower than the NYS rate of 13.5%.
- Of the Columbia “food insecure” population, 2,550 or 37%, were ineligible for assistance. This was 40% higher than the NYS rate of 27%.
- Columbia’s rate of fast food restaurants of 58.4 per 100,000 was lower than the Capital Region (82.9) and NYS (86.3). Columbia’s rate was stable between 2008-12 and 2011-15.
- Almost 2,600, or 10.2% of Columbia households received SNAP benefits. This rate increased 32% from 2009 to 2014.

Indicator	Columbia County		Capital Region		NYS
	#	Rate	#	Rate	Rate
% pop. At or Below 125% FPL (ACS 2011-15)	9,507	15.8	135,307	14.7	20.1
% pop. at or Below 185% FPL (ACS 2011-15)	15,621	26.0	210,876	22.9	30.2
% Students Eligible for Free or Reduced lunch (SRC 2015-16)	3,394	49.0	47,048	38.0	52.0
% Low-Income (<200% FPL) with Low Food Access (FARA 2015)	3,192	19.8	44,688	19.5	7.5
% pop. Who are Food Insecure (Feeding America 2014)	6,370	10.2	109,530	11.5	13.5
% Food Insecure pop. Ineligible for Assistance (Feeding America 2014)	2,550	37.0	48,200	42.0	27.0
% pop. <18 Who are Food Insecure (Feeding America 2014)	2,400	19.4	38,600	19.4	22.1
% Food Insecure pop. <18 Ineligible for Assistance (Feeding America 2014)	840	35.0	15,400	40.0	31.0
% Households Receiving SNAP Benefits (ACS 2011-15)	2,576	10.2	40,024	10.6	15.4
SNAP-Authorized Retailers per 1,000 SNAP Households (FNS, USDA 2016)	77	29.9	902	22.5	16.7
Fast Food Restaurants per 100,000 pop. (CBP 2014)	37	58.4	788	82.9	86.3

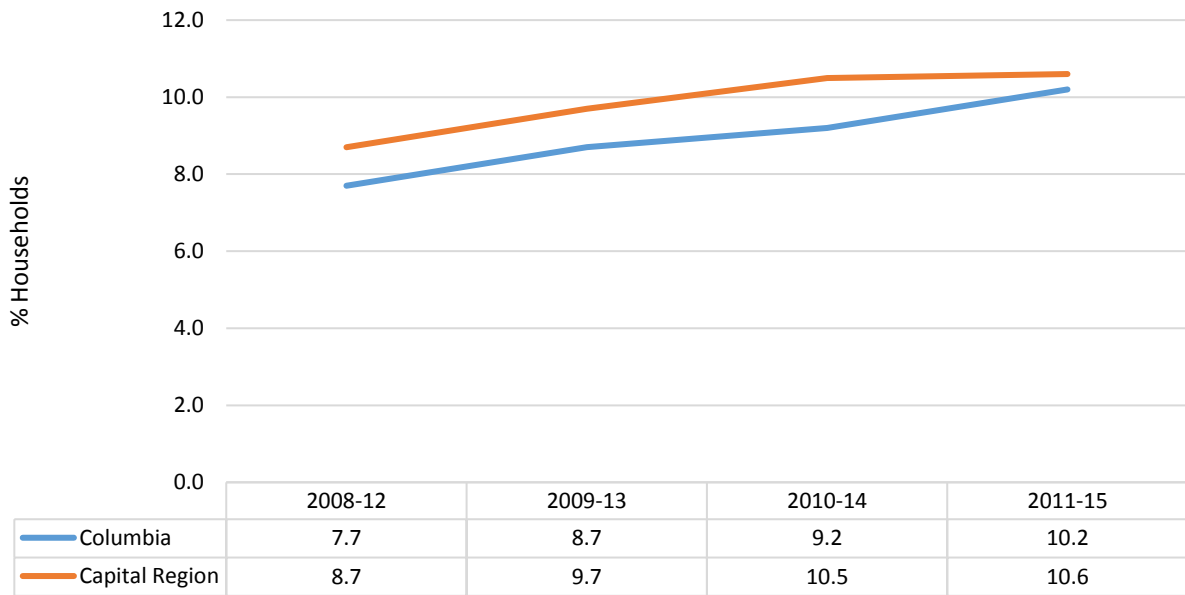
ACS= American Community Survey, Bureau of Census  
 SRC= School Report Cards  
 CBP= County Business Patterns, Bureau of Census

FARA= Food Access Research Atlas  
 FNS, USDA= Food and Nutrition Service, U.S. Dept. of Agriculture

**Fast Food Restaurant Rate per 100,000 population, Columbia County and Capital Region, 2009-2014<sup>7</sup>**



**% Households with SNAP Benefits, Columbia County and Capital Region, ACS, 2008-12 to 2011-15<sup>7</sup>**



## Housing-Related

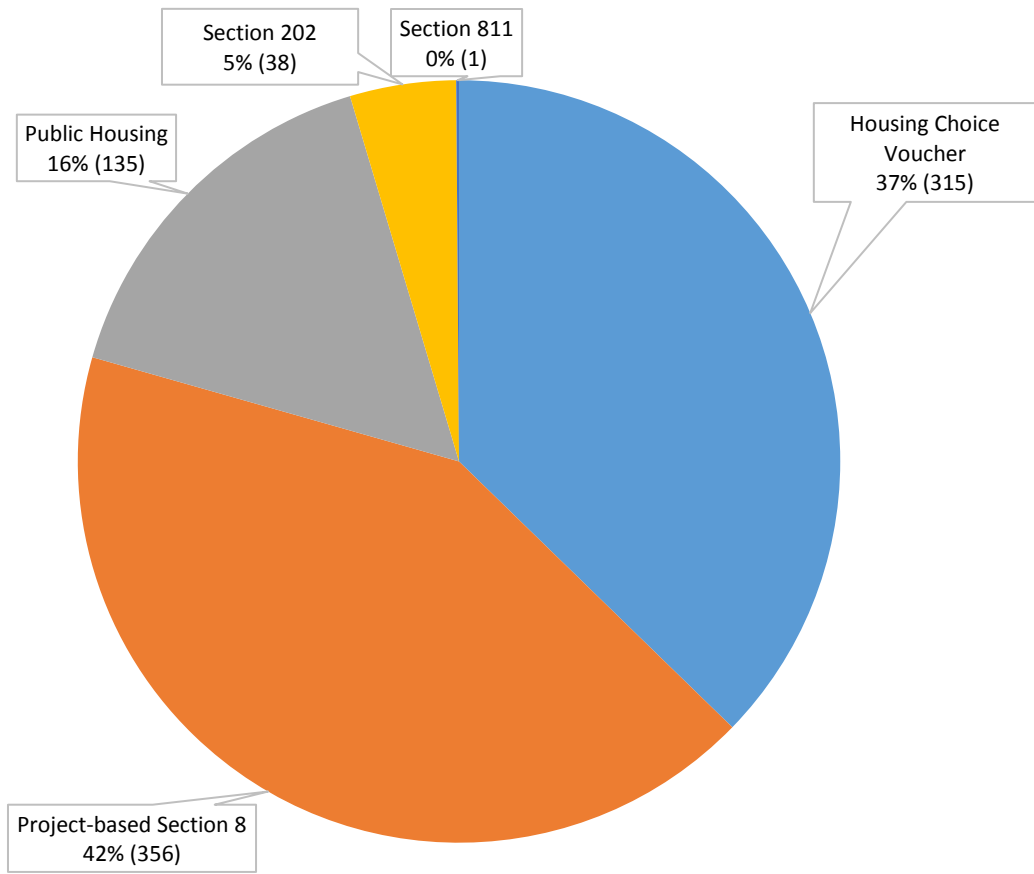
### *Highlights:*

- Almost 8,200, or 32.5% of Columbia’s occupied housing units were considered substandard. This was lower than the NYS rate of 41.9%.
- About 8,400, or 33.2% of Columbia households were considered cost-burdened, and over 3,500, or 14.0% were severely cost-burdened.
- Approximately 23%, or 7,300, of Columbia’s housing units were built before 1960. This was slightly lower than the Capital Region (26%), and lower than NYS (56%).
- Columbia had 845 HUD-assisted housing units for a rate of 25.8 per 1,000 units. This was lower than both the Capital Region (45.6), and NYS (74.3).
- Of Columbia’s HUD-Assisted housing units: 42% were Project-based Section 8 housing; 37% were Housing Choice Voucher; and 16% Public Housing.

Indicator	Columbia County		Capital Region		NYS
	#	Rate	#	Rate	Rate
% Substandard Housing (ACS 2011-15)	8,194	32.5	115,434	30.7	41.9
% Overcrowded Housing (ACS 2011-15)	305	1.3	3,731	1.1	7.2
% Cost-Burdened Households (>30% Income) (ACS 2011-15)	8,368	33.2	118,201	31.4	40.7
% Severe Cost-Burdened Households (>50% Income) (ACS 2011-15)	3,541	14.0	52,160	13.9	20.6
% Pre-1960 Housing Units (ACS 2011-15)	7,298	22.3	115,079	26.1	56.1
HUD-Assisted Housing Units per 1,000 Units (U.S. Dept. of Housing and Urban Development 2015)	845	25.8	19,996	45.6	74.3
ACS= American Community Survey, Bureau of Census					



**Assisted Housing Units by HUD Program, Columbia, 2015 (N=845)<sup>7</sup>**



## Greene County

### Food-Related

#### Highlights:

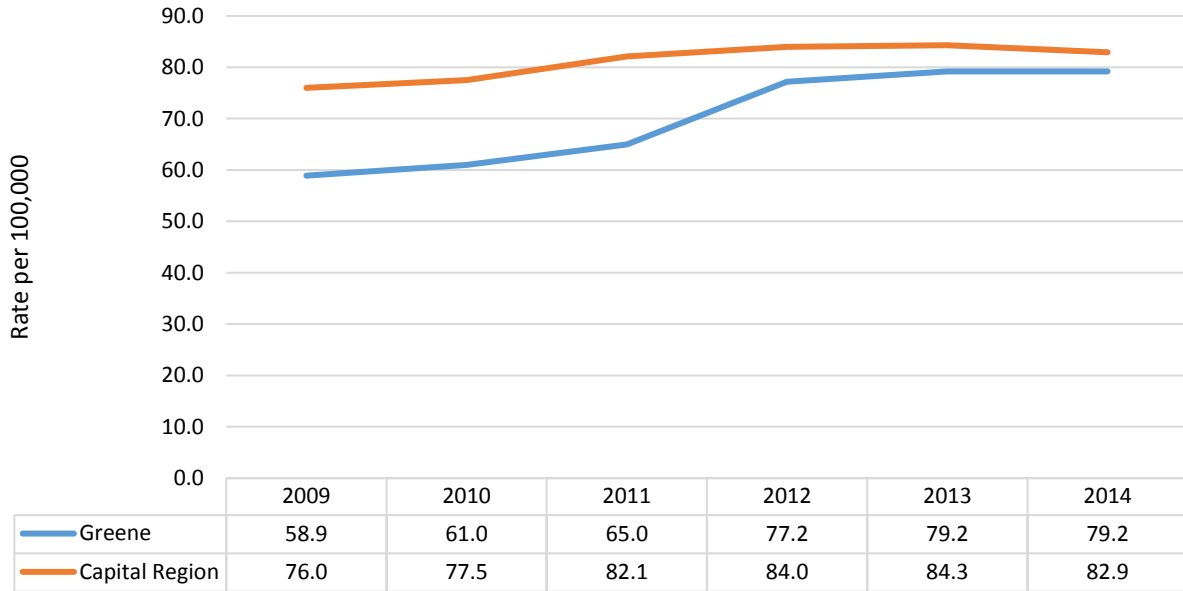
- Approximately 2,800, or 45% of Greene school children were eligible for free or reduced cost lunch; lower than the NYS rate of 52%.
- Almost 1,100 Greene low-income residents, or 7.1%, had low access to healthy foods; similar to the NYS rate of 7.5%, but lower than the Capital Region rate of 19.5%.
- About 6,700 Greene residents, or 11.8% were “food insecure”, lower than the NYS rate of 13.5%.
- Of the Greene “food insecure” population, 2,300 or 36%, were ineligible for assistance. This was 30% higher than the NYS rate of 27%.
- Greene’s rate of fast food restaurants of 79.2 per 100,000 was lower than the Capital Region (82.9) and NYS (86.3). However, Greene’s rate increased 34% from 2008-12 to 2011-15.
- Almost 1,800, or 10.2%, of Greene households received SNAP benefits. This rate increased 11% from 2009 to 2014.

Indicator	Greene County		Capital Region		NYS
	#	Rate	#	Rate	Rate
% pop. At or Below 125% FPL (ACS 2011-15)	7,569	16.8	135,307	14.7	20.1
% pop. at or Below 185% FPL (ACS 2011-15)	12,402	27.5	210,876	22.9	30.2
% Students Eligible for Free or Reduced lunch (SRC 2015-16)	2,778	45.0	47,048	38.0	52.0
% Low-Income (<200% FPL) with Low Food Access (FARA 2015)	1,062	7.1	44,688	19.5	7.5
% pop. Who are Food Insecure (Feeding America 2014)	6,730	11.8	109,530	11.5	13.5
% Food Insecure pop. Ineligible for Assistance (Feeding America 2014)	2,300	36.0	48,200	42.0	27.0
% pop. <18 Who are Food Insecure (Feeding America 2014)	2,100	23.1	38,600	19.4	22.1
% Food Insecure pop. <18 Ineligible for Assistance (Feeding America 2014)	715	34.0	15,400	40.0	31.0
% Households Receiving SNAP Benefits (ACS 2011-15)	1,804	10.2	40,024	10.6	15.4
SNAP-Authorized Retailers per 1,000 SNAP Households (FNS, USDA 2016)	57	31.6	902	22.5	16.7
Fast Food Restaurants per 100,000 pop. (CBP 2014)	39	79.2	788	82.9	86.3

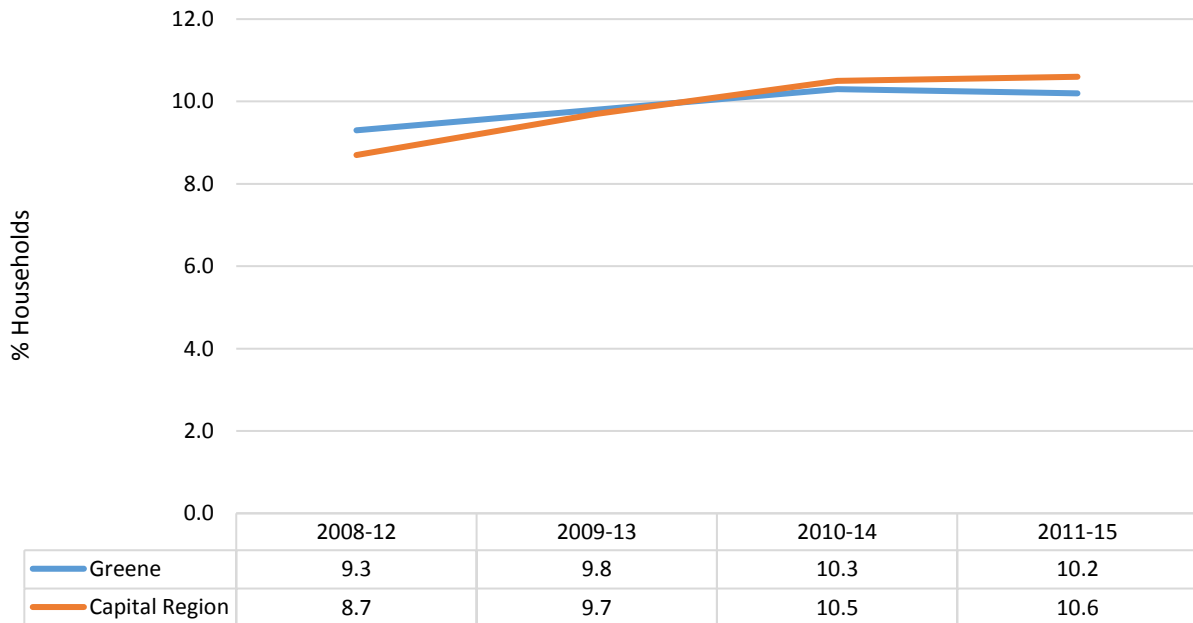
ACS= American Community Survey, Bureau of Census  
 SRC= School Report Cards  
 CBP= County Business Patterns, Bureau of Census

FARA= Food Access Research Atlas  
 FNS, USDA= Food and Nutrition Service, U.S. Dept. of Agriculture

**Fast Food Restaurant Rate per 100,000 population,  
Greene County and Capital Region, 2009-2014 <sup>7</sup>**



**% Households with SNAP Benefits, Greene County and Capital Region,  
ACS, 2008-12 to 2011-15 <sup>7</sup>**



## Housing-Related

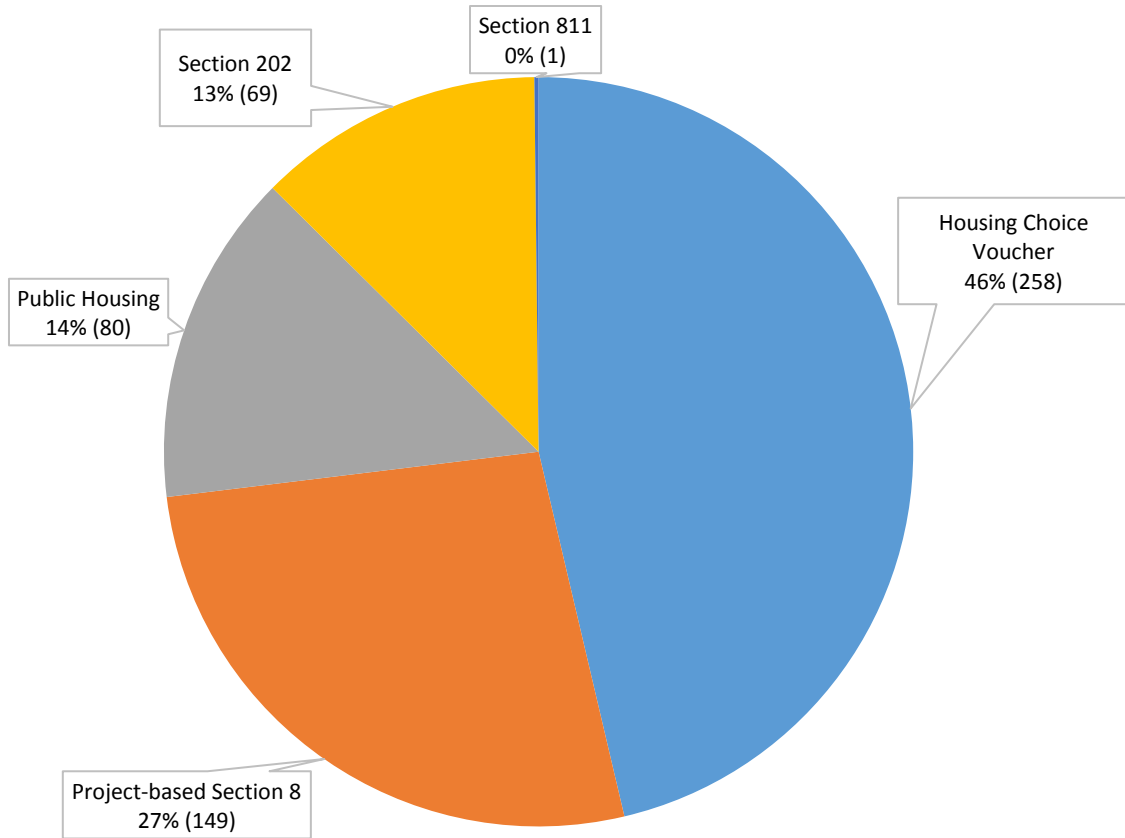
### *Highlights:*

- Over 6,300, or 35.8% of Greene’s occupied housing units were considered substandard. This was lower than the NYS rate of 41.9%.
- About 6,500, or 36.7% of Greene households were considered cost-burdened, and over 2,800, or 16.0% were severely cost-burdened.
- Approximately 20%, or 5,800, of Greene’s housing units were built before 1960. This was lower than both the Capital Region (26%), and NYS (56%).
- Greene had 560 HUD-assisted housing units for a rate of 19.1 per 1,000 units. This was much lower than both the Capital Region (45.6), and NYS (74.3).
- Of Greene’s HUD-Assisted housing units: 46% were Housing Choice Voucher; 27% Project-based Section 8 housing; 14% Public Housing; and 13% Section 202.

Indicator	Greene County		Capital Region		NYS
	#	Rate	#	Rate	Rate
% Substandard Housing (ACS 2011-15)	6,318	35.8	115,434	30.7	41.9
% Overcrowded Housing (ACS 2011-15)	193	1.2	3,731	1.1	7.2
% Cost-Burdened Households (>30% Income) (ACS 2011-15)	6,475	36.7	118,201	31.4	40.7
% Severe Cost-Burdened Households (>50% Income) (ACS 2011-15)	2,825	16.0	52,160	13.9	20.6
% Pre-1960 Housing Units (ACS 2011-15)	5,751	19.6	115,079	26.1	56.1
HUD-Assisted Housing Units per 1,000 Units (U.S. Dept. of Housing and Urban Development 2015)	557	19.1	19,996	45.6	74.3

ACS= American Community Survey, Bureau of Census

**Assisted Housing Units by HUD Program, Greene, 2015 (N=557)<sup>7</sup>**



## Rensselaer County

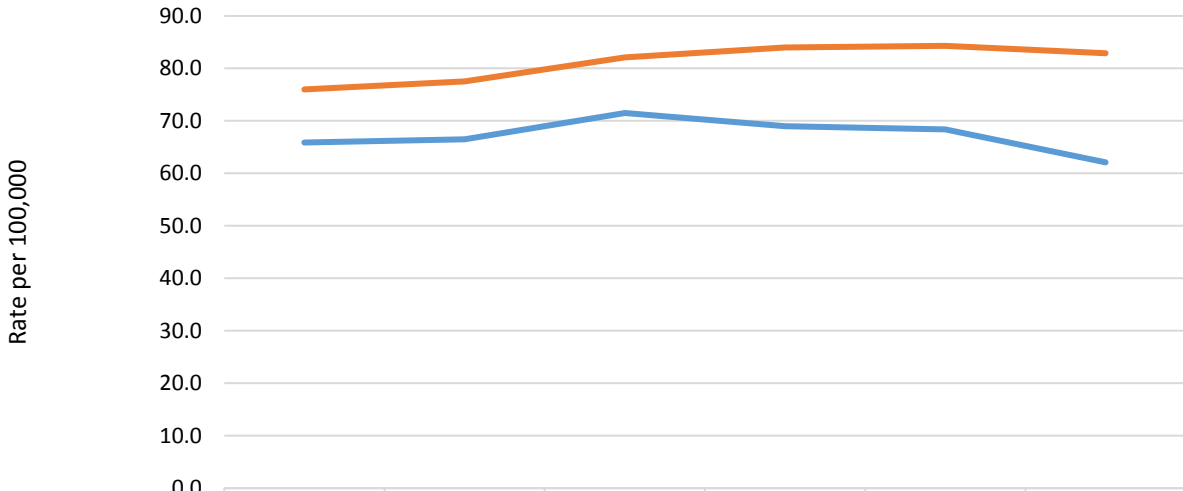
### Food-Related

#### Highlights:

- Approximately 8,600, or 44% of Rensselaer school children were eligible for free or reduced cost lunch; lower than the NYS rate of 52%.
- Over 7,800 Rensselaer low-income residents, or 18.6%, had low access to healthy foods; over 2.5 times higher than the NYS rate of 7.5%.
- About 18,800 Rensselaer residents, or 11.8% were “food insecure”, lower than the NYS rate of 13.5%.
- Of the Rensselaer “food insecure” population, 7,600 or 40%, were ineligible for assistance. This was 1.5 times higher than the NYS rate of 27%.
- Rensselaer’s rate of fast food restaurants of 62.1 per 100,000 was lower than both the Capital Region (82.9) and NYS (86.3). Rensselaer’s rate decreased 6% from 2008-12 to 2011-15.
- Over 7,600, or 9.2%, of Rensselaer households received SNAP benefits. This rate increased 18% from 2009 to 2014.

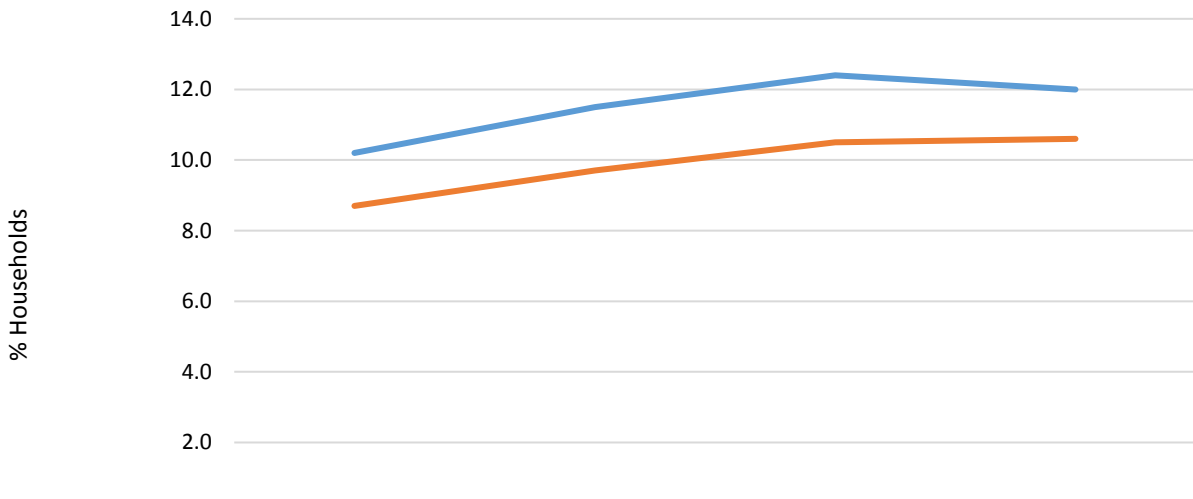
Indicator	Rensselaer County		Capital Region		NYS
	#	Rate	#	Rate	Rate
% pop. At or Below 125% FPL (ACS 2011-15)	24,104	15.6	135,307	14.7	20.1
% pop. at or Below 185% FPL (ACS 2011-15)	37,846	24.6	210,876	22.9	30.2
% Students Eligible for Free or Reduced lunch (SRC 2015-16)	8,586	44.0	47,048	38.0	52.0
% Low-Income (<200% FPL) with Low Food Access (FARA 2015)	7,839	18.6	44,688	19.5	7.5
% pop. Who are Food Insecure (Feeding America 2014)	18,800	11.8	109,530	11.5	13.5
% Food Insecure pop. Ineligible for Assistance (Feeding America 2014)	7,600	40.0	48,200	42.0	27.0
% pop. <18 Who are Food Insecure (Feeding America 2014)	7,180	21.5	38,600	19.4	22.1
% Food Insecure pop. <18 Ineligible for Assistance (Feeding America 2014)	2,600	36.0	15,400	40.0	31.0
% Households Receiving SNAP Benefits (ACS 2011-15)	7,623	12.0	40,024	10.6	15.4
SNAP-Authorized Retailers per 1,000 SNAP Households (FNS, USDA 2016)	147	19.3	902	22.5	16.7
Fast Food Restaurants per 100,000 pop. (CBP 2014)	99	62.1	788	82.9	86.3
ACS= American Community Survey, Bureau of Census SRC= School Report Cards CBP= County Business Patterns, Bureau of Census			FARA= Food Access Research Atlas FNS, USDA= Food and Nutrition Service, U.S. Dept. of Agriculture		

**Fast Food Restaurant Rate per 100,000 population, Rensselaer County and Capital Region, 2009-2014<sup>7</sup>**



	2009	2010	2011	2012	2013	2014
Rensselaer	65.9	66.5	71.5	69.0	68.4	62.1
Capital Region	76.0	77.5	82.1	84.0	84.3	82.9

**% Households with SNAP Benefits, Rensselaer and Capital Region, ACS, 2008-12 to 2011-15<sup>7</sup>**



	2008-12	2009-13	2010-14	2011-15
Rensselaer	10.2	11.5	12.4	12.0
Capital Region	8.7	9.7	10.5	10.6

## Housing-Related

### *Highlights:*

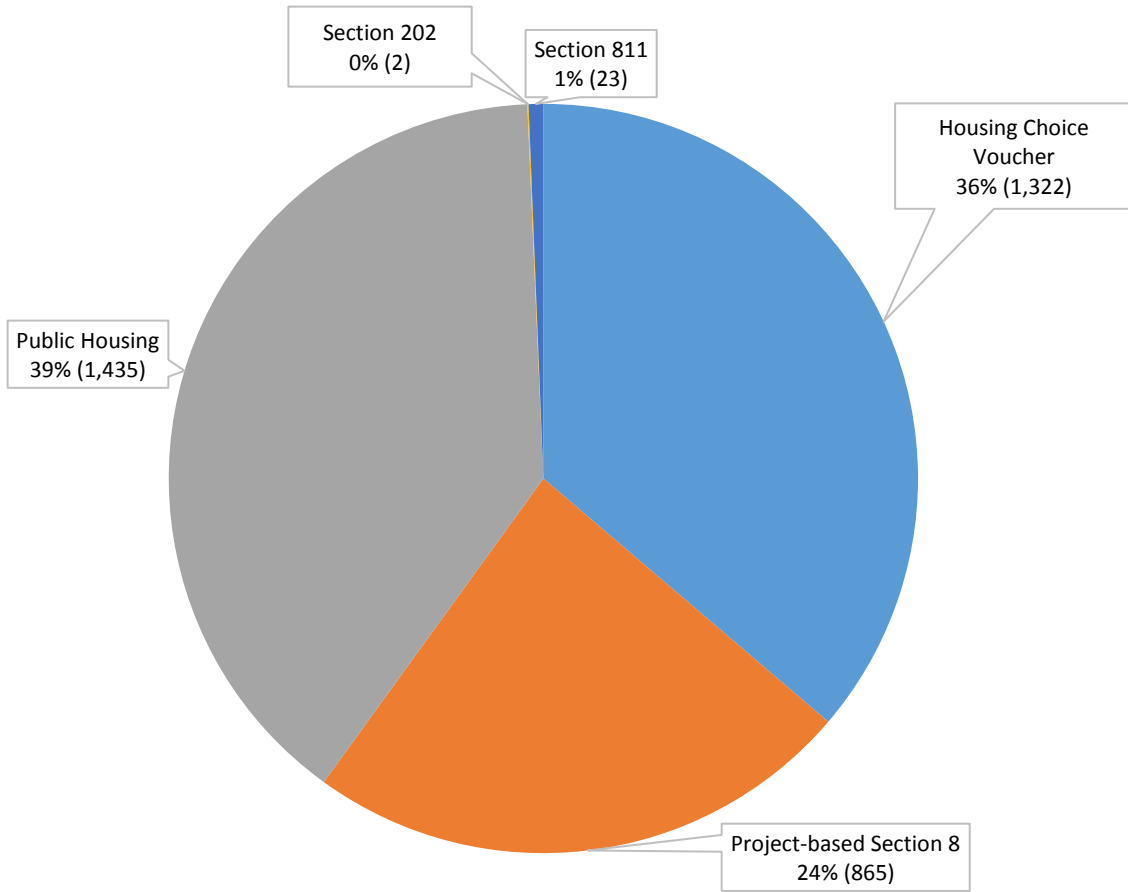
- Over 19,800, or 31.3% of Rensselaer’s occupied housing units were considered substandard. This was lower than the NYS rate of 41.9%.
- About 20,200, or 31.9% of Rensselaer households were considered cost-burdened, and almost 8,800, or 13.8% were severely cost-burdened.
- Approximately 26%, or 18,300 of Rensselaer’s housing units were built before 1960. This was the same as the Capital Region (26%), and lower than NYS (56%).
- Rensselaer had 3,650 HUD-assisted housing units for a rate of 51.0 per 1,000 units. This was higher than the Capital Region (45.6), but lower than NYS (74.3).
- Of Rensselaer’s HUD-Assisted housing units: 39% were Public Housing; 36% were Housing Choice Voucher; and 24% were Project-based Section 8 housing.

Indicator	Rensselaer County		Capital Region		NYS
	#	Rate	#	Rate	Rate
% Substandard Housing (ACS 2011-15)	19,840	31.3	115,434	30.7	41.9
% Overcrowded Housing (ACS 2011-15)	794	1.4	3,731	1.1	7.2
% Cost-Burdened Households (>30% Income) (ACS 2011-15)	20,219	31.9	118,201	31.4	40.7
% Severe Cost-Burdened Households (>50% Income) (ACS 2011-15)	8,774	13.8	52,160	13.9	20.6
% Pre-1960 Housing Units (ACS 2011-15)	18,345	25.6	115,079	26.1	56.1
HUD-Assisted Housing Units per 1,000 Units (U.S. Dept. of Housing and Urban Development 2015)	3,647	51.0	19,996	45.6	74.3

ACS= American Community Survey, Bureau of Census



**Assisted Housing Units by HUD Program, Rensselaer, 2015 (N=3,647)<sup>7</sup>**



## Saratoga County

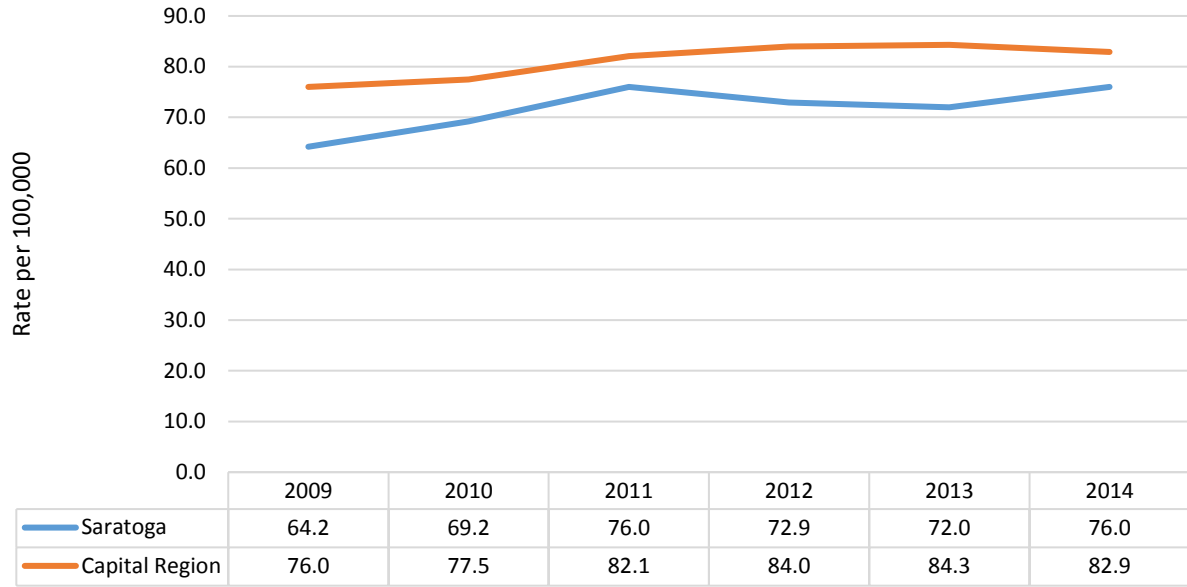
### Food-Related

#### Highlights:

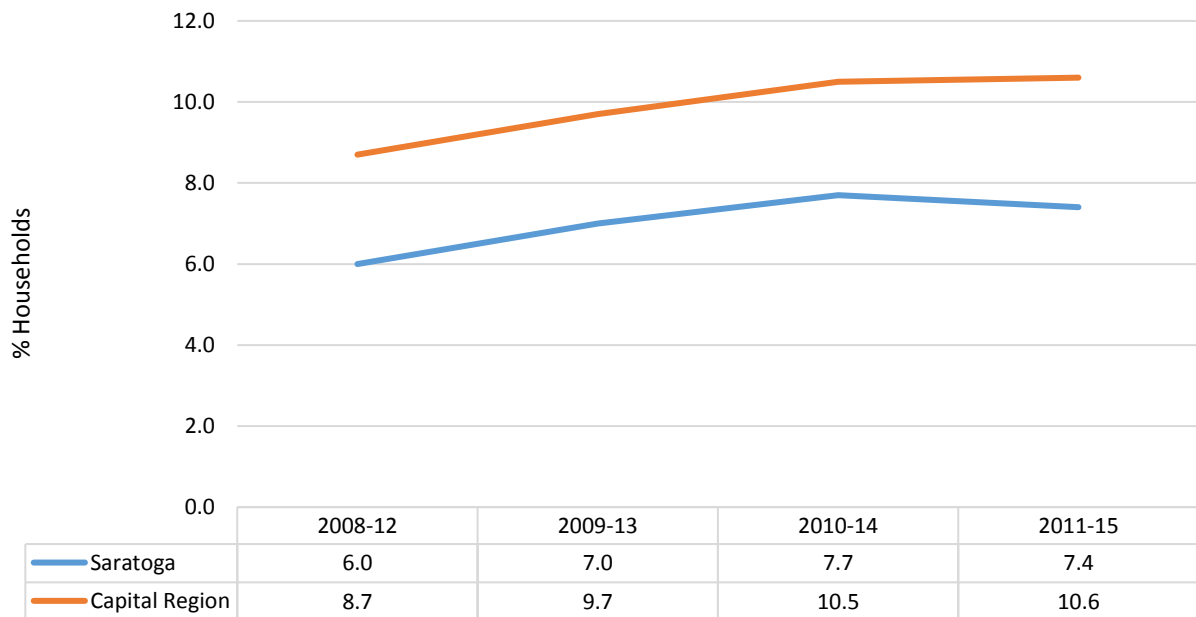
- Approximately 7,700, or 23% of Saratoga school children were eligible for free or reduced cost lunch; much lower than the NYS rate of 52%.
- About 8,600 Saratoga low-income residents, or 22.1%, had low access to healthy foods; almost 3 times higher than the NYS rate of 7.5%.
- About 20,000 Saratoga residents, or 9.0% were “food insecure”, lower than the NYS rate of 13.5%.
- Of the Saratoga “food insecure” population, 1,050 or 52%, were ineligible for assistance. This was almost twice as high as the NYS rate of 27%.
- Saratoga’s rate of fast food restaurants of 76.0 per 100,000 was lower than the Capital Region (82.9) and NYS (86.3). However, Saratoga’s rate increased 18% from 2008-12 to 2011-15.
- Over 6,600, or 7.4%, of Saratoga households received SNAP benefits. This rate increased 23% from 2009 to 2014.

Indicator	Saratoga County		Capital Region		NYS
	#	Rate	#	Rate	Rate
% pop. At or Below 125% FPL (ACS 2011-15)	20,095	9.2	135,307	14.7	20.1
% pop. at or Below 185% FPL (ACS 2011-15)	34,966	15.9	210,876	22.9	30.2
% Students Eligible for Free or Reduced lunch (SRC 2015-16)	7,703	23.0	47,048	38.0	52.0
% Low-Income (<200% FPL) with Low Food Access (FARA 2015)	8,572	22.1	44,688	19.5	7.5
% pop. Who are Food Insecure (Feeding America 2014)	19,990	9.0	109,530	11.5	13.5
% Food Insecure pop. Ineligible for Assistance (Feeding America 2014)	1,050	52.0	48,200	42.0	27.0
% pop. <18 Who are Food Insecure (Feeding America 2014)	8,410	17.1	38,600	19.4	22.1
% Food Insecure pop. <18 Ineligible for Assistance (Feeding America 2014)	4,550	54.0	15,400	40.0	31.0
% Households Receiving SNAP Benefits (ACS 2011-15)	6,637	7.4	40,024	10.6	15.4
SNAP-Authorized Retailers per 1,000 SNAP Households (FNS, USDA 2016)	160	24.1	902	22.5	16.7
Fast Food Restaurants per 100,000 pop. (CBP 2014)	167	76.0	788	82.9	86.3
ACS= American Community Survey, Bureau of Census SRC= School Report Cards CBP= County Business Patterns, Bureau of Census			FARA= Food Access Research Atlas FNS, USDA= Food and Nutrition Service, U.S. Dept. of Agriculture		

**Fast Food Restaurant Rate per 100,000 population,  
Saratoga County and Capital Region, 2009-2014 <sup>7</sup>**



**% Households with SNAP Benefits, Saratoga and Capital Region,  
ACS, 2008-12 to 2011-15<sup>7</sup>**



## Housing-Related

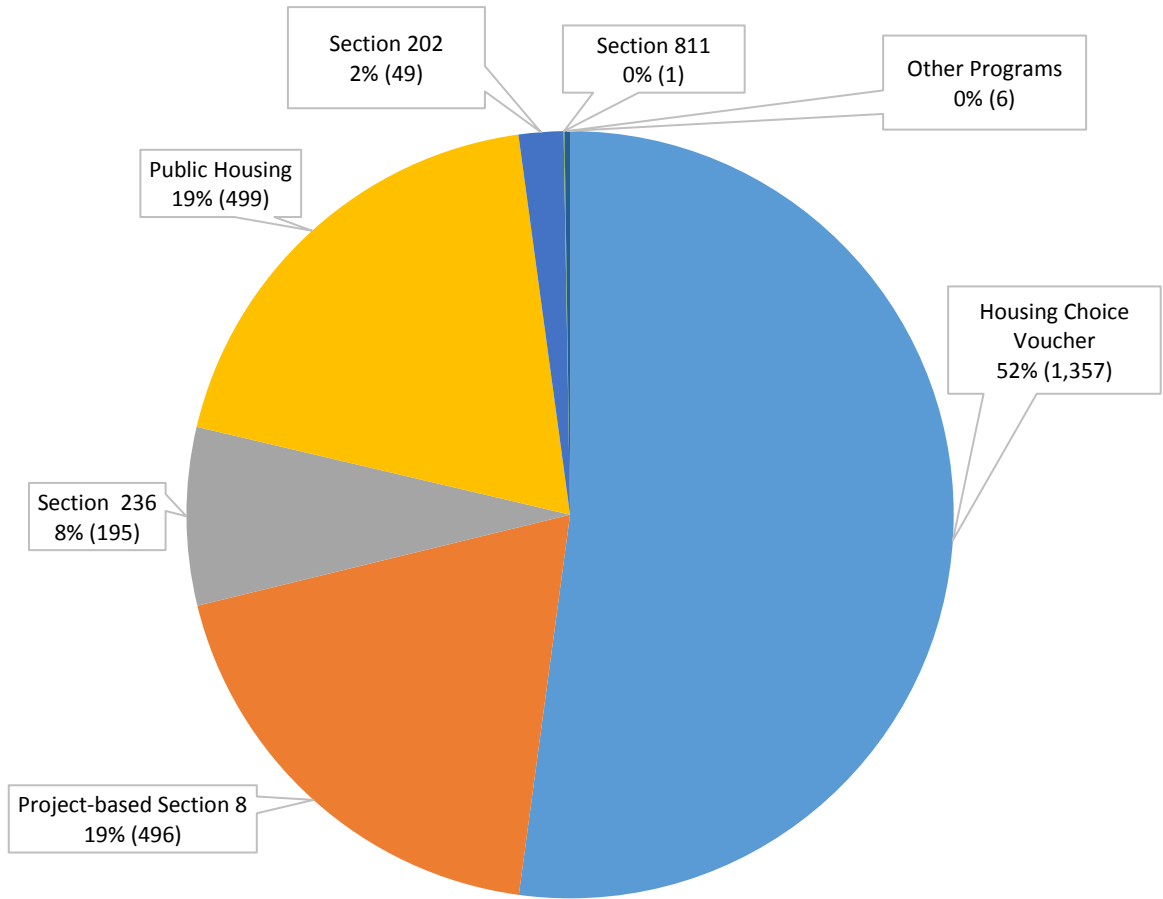
### *Highlights:*

- About 24,000, or 26.6% of Saratoga’s occupied housing units were considered substandard. This was much lower than the NYS rate of 41.9%.
- Almost 25,000, or 27.5% of Saratoga households were considered cost-burdened, and over 10,200, or 11.4% were severely cost-burdened.
- Over 18%, or 18,600 of Saratoga’s housing units were built before 1960. This was the lower than the Capital Region (26%), and much lower than NYS (56%).
- Saratoga had 2,600 HUD-assisted housing units for a rate of 26.4 per 1,000 units. This was much lower than the Capital Region (45.6), and NYS (74.3).
- Of Saratoga’s HUD-Assisted housing units: 52% were Housing Choice Voucher; 19% were Public Housing; and 19% were Project-based Section 8 housing.

Indicator	Saratoga County		Capital Region		NYS
	#	Rate	#	Rate	Rate
% Substandard Housing (ACS 2011-15)	23,944	26.6	115,434	30.7	41.9
% Overcrowded Housing (ACS 2011-15)	607	0.7	3,731	1.1	7.2
% Cost-Burdened Households (>30% Income) (ACS 2011-15)	24,698	27.5	118,201	31.4	40.7
% Severe Cost-Burdened Households (>50% Income) (ACS 2011-15)	10,213	11.4	52,160	13.9	20.6
% Pre-1960 Housing Units (ACS 2011-15)	18,571	18.4	115,079	26.1	56.1
HUD-Assisted Housing Units per 1,000 Units (U.S. Dept. of Housing and Urban Development 2015)	2,602	26.4	19,996	45.6	74.3

ACS= American Community Survey, Bureau of Census

**Assisted Housing Units by HUD Program, Saratoga, 2015 (N=2,602)<sup>7</sup>**



## Schenectady County

### Food-Related

*Highlights:*

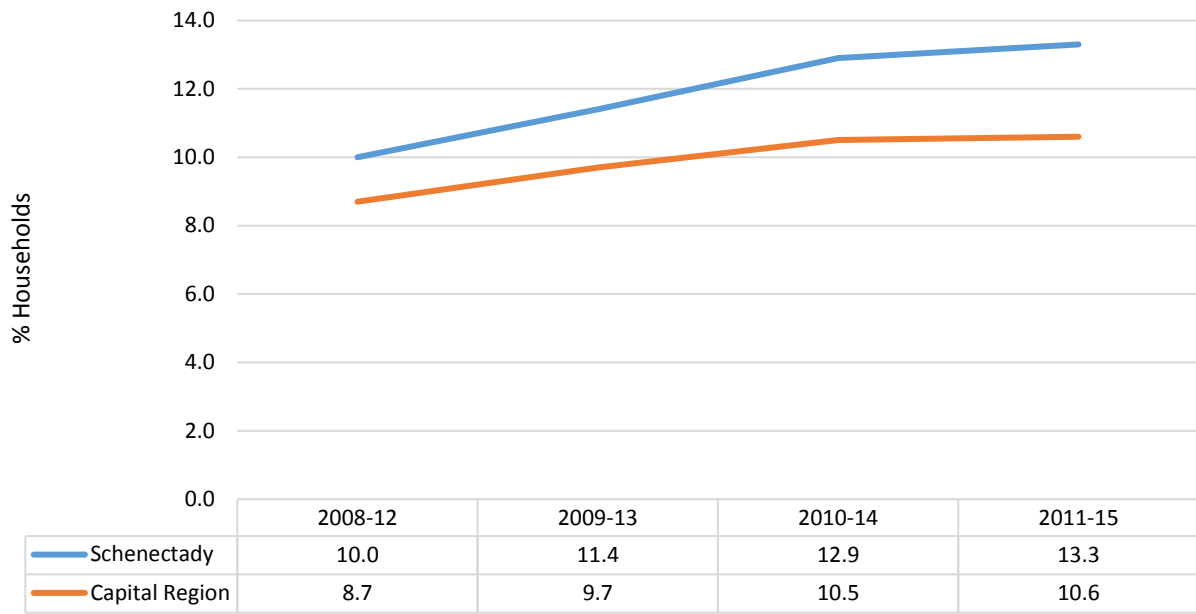
- Over 10,000, or 47% of Schenectady school children were eligible for free or reduced cost lunch; lower than the NYS rate of 52%.
- Approximately 8,900 Schenectady low-income residents, or 22.9%, had low access to healthy foods; over 3 times higher than the NYS rate of 7.5%.
- Over 18,600 Schenectady residents, or 12.0% were “food insecure”, lower than the NYS rate of 13.5%.
- Of the Schenectady “food insecure” population, 7,100 or 38%, were ineligible for assistance. This was 1.4 times higher than the NYS rate of 27%.
- Schenectady’s rate of fast food restaurants of 78.9 per 100,000 was lower than both the Capital Region (82.9) and NYS (86.3). Schenectady’s rate increased 10% from 2008-12 to 2011-15.
- Over 7,600, or 13.3%, of Schenectady households received SNAP benefits. This rate increased 33% from 2009 to 2014.

Indicator	Schenectady County		Capital Region		NYS
	#	Rate	#	Rate	Rate
% pop. At or Below 125% FPL (ACS 2011-15)	24,464	16.2	135,307	14.7	20.1
% pop. at or Below 185% FPL (ACS 2011-15)	37,570	24.9	210,876	22.9	30.2
% Students Eligible for Free or Reduced lunch (SRC 2015-16)	10,025	47.0	47,048	38.0	52.0
% Low-Income (<200% FPL) with Low Food Access (FARA 2015)	8,883	22.9	44,688	19.5	7.5
% pop. Who are Food Insecure (Feeding America 2014)	18,620	12.0	109,530	11.5	13.5
% Food Insecure pop. Ineligible for Assistance (Feeding America 2014)	7,100	38.0	48,200	42.0	27.0
% pop. <18 Who are Food Insecure (Feeding America 2014)	7,310	20.9	38,600	19.4	22.1
% Food Insecure pop. <18 Ineligible for Assistance (Feeding America 2014)	2,400	33.0	15,400	40.0	31.0
% Households Receiving SNAP Benefits (ACS 2011-15)	7,500	13.3	40,024	10.6	15.4
SNAP-Authorized Retailers per 1,000 SNAP Households (FNS, USDA 2016)	171	22.7	902	22.5	16.7
Fast Food Restaurants per 100,000 pop. (CBP 2014)	122	78.9	788	82.9	86.3

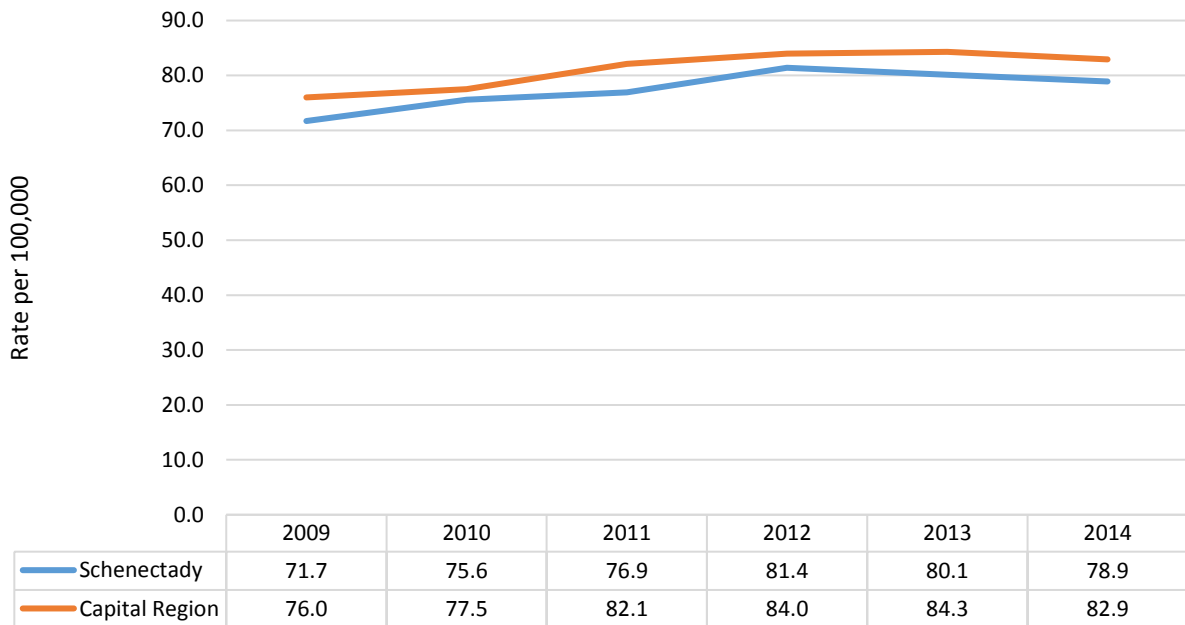
ACS= American Community Survey, Bureau of Census  
 SRC= School Report Cards  
 CBP= County Business Patterns, Bureau of Census

FARA= Food Access Research Atlas  
 FNS, USDA= Food and Nutrition Service, U.S. Dept. of Agriculture

**% Households with SNAP Benefits, Schenectady and Capital Region, ACS 2008-12 to 2011-15<sup>7</sup>**



**Fast Food Restaurant Rate per 100,000 population, Schenectady County and Capital Region, 2009-2014<sup>7</sup>**



## Housing-Related

### Highlights:

- Almost 18,500, or 32.5% of Schenectady’s occupied housing units were considered substandard. This was lower than the NYS rate of 41.9%.
- About 18,650, or 32.9% of Schenectady households were considered cost-burdened, and almost 8,500, or 14.9% were severely cost-burdened.
- Approximately 34%, or 23,140 of Schenectady’s housing units were built before 1960. This was higher than the Capital Region (26%), but lower than NYS (56%).
- Schenectady had 3,750 HUD-assisted housing units for a rate of 55.1 per 1,000 units. This was higher than the Capital Region (45.6), but lower than NYS (74.3).
- Of Schenectady’s HUD-Assisted housing units: 50% were Housing Choice Voucher; 27% were Public Housing; and 19% were Project-based Section 8 housing.

Indicator	Schenectady County		Capital Region		NYS
	#	Rate	#	Rate	Rate
% Substandard Housing (ACS 2011-15)	18,453	32.5	115,434	30.7	41.9
% Overcrowded Housing (ACS 2011-15)	681	1.4	3,731	1.1	7.2
% Cost-Burdened Households (>30% Income) (ACS 2011-15)	18,650	32.9	118,201	31.4	40.7
% Severe Cost-Burdened Households (>50% Income) (ACS 2011-15)	8,439	14.9	52,160	13.9	20.6
% Pre-1960 Housing Units (ACS 2011-15)	23,138	33.9	115,079	26.1	56.1
HUD-Assisted Housing Units per 1,000 Units (U.S. Dept. of Housing and Urban Development 2015)	3,755	55.1	19,996	45.6	74.3
ACS= American Community Survey, Bureau of Census SRC= School Report Cards CBP= County Business Patterns, Bureau of Census	FARA= Food Access Research Atlas FNS, USDA= Food and Nutrition Survey, U.S. Dept. of Agriculture				



**Assisted Housing Units by HUD Program, Schenectady, 2015 (N=3,755)<sup>7</sup>**

