

eBRFSS 2013-2014 Health Indicators: Saratoga

General Description	2
Improve Health Status and Reduce Health Disparities	3
Percentage of adults who did not receive medical care because of cost	3
Percentage of adults who have a regular health care provider	4
Percentage of adults who had a dentist visit within the past year	5
Percentage of adults living with a disability.....	6
Percentage of adults aged 18-64 years with healthcare coverage	7
Percentage of adults aged 18-64 years who saw a doctor for a routine checkup within the last year	8
Percentage of adults experiencing housing insecurity in the past 12 months.....	9
Percentage of adults experiencing food insecurity in the past 12 months.....	10
Percentage of adults with poor self-reported health	11
Percentage of adults who report 14 or more days of poor physical health.....	12
Prevent Chronic Diseases	13
Percentage of adults who are obese	13
Percentage of adults with an annual household income less than \$25,000 who are obese	14
Percentage of adults living with a disability who are obese	15
Percentage of adults overweight or obese	16
Percentage of adults who participated in leisure time physical activity in the past 30 days.....	17
Percentage of adults who consume one or more sugary drinks daily	18
Percentage of adults who consume fast-food three or more times per week	19
Percentage of adults with physician diagnosed diabetes	20
Percentage of adults who are current smokers	21
Percentage of adults with annual household income less than \$25,000 who are current smokers	22
Percentage of adults aged 18-24 years who are current smokers.....	23
Percentage of women aged 50-74 years receiving breast cancer screening based on recent guidelines	24
Percentage of women aged 50-74 years with annual household income of less than \$25,000 receiving breast cancer screening based on recent guidelines.....	25
Percentage of women aged 21-65 years receiving cervical cancer screening based on recent guidelines	26
Percentage of women aged 21-65 years with annual household income of less than \$25,000 receiving cervical cancer screening based on recent guidelines.....	27
Percentage of adults aged 50-75 years receiving colorectal cancer screening based on recent guidelines.....	28
Percentage of adults aged 50-75 years with annual household income less than \$25,000 receiving colorectal cancer screening based on recent guidelines.....	29
Percentage of adults who had a test for high blood sugar or diabetes within the past three years	30
Percentage of adults with physician-diagnosed prediabetes	31
Percentage of adults with physician-diagnosed high blood pressure.....	32
Percentage of adults with diagnosed high blood pressure taking high blood pressure medication	33
Percentage of adults with current asthma	34
Percent of adults with cholesterol checked.....	35
Percentage of adults 18 years and older with elevated cholesterol.....	36
Percentage of adults who have taken a course or class to learn how to manage their chronic disease or condition	37
Percentage of adults with arthritis	38
Promote a Healthy and Safe Environment	39
Percentage of adults who consider their neighborhood suitable for walking and physical activity.....	39
Percentage of adults aged 65+ years with at least one fall in the past 12 months.....	40
Among adults aged 65+ years with at least one fall in the past 12 months, percent that resulted in injury.....	41
Prevent HIV/STDs, Vaccine Preventable Diseases and Healthcare-Associated Infections.....	42
Percentage of adults aged 47-68 years reporting ever tested for Hepatitis C (HCV).....	42
Percentage of adults aged 18+ years with flu immunization in the past year	43
Percentage of adults aged 65+ years with flu immunization in the past year	44
Percentage of adults aged 65+ years with pneumococcal immunization.....	45
Promote Healthy Women, Infants, and Children	46
Percentage of women aged 18-44 years who had dental visit within the last year	46
Women aged 18-44 years who saw a doctor for a routine checkup within the last year.....	47
Percentage of women aged 18-64 years with health care coverage	48
Percentage of women aged 18-44 years whose health care provider discussed planning a healthy pregnancy	49
Promote Mental Health and Prevention Substance Abuse	50
Percentage of adults with poor mental health for 14 or more days in the last month	50
Percentage of adult binge drinking during the past month	51
Percentage of cigarette smoking among adults who report poor mental health.....	52

General Description

The New York State Expanded Behavioral Risk Factor Surveillance System 2013-2014 (2014 eBRFSS) was design to supplement the Center for Disease Control and Prevention (CDC) Behavioral Risk Factor Surveillance System (BRFSS), which is conducted annually in New York State. The purpose of the 2014 eBRFSS was to produce local information on key public health issues. Data for the project were collected from April 15, 2013 to May 10, 2014. The 2014 eBRFSS reached both households with landline telephones and households which only had cell phones. Like the annual BRFSS, New York State's 2014 eBRFSS was designed to be representative of the non-institutionalized adult household population, aged 18 years and older.

Reported Health Indicators

There are a total of 50 health indicators included in the report. The health indicators include 10 measures included in the New York State Department of Health's Prevention Agenda, NYS Health Innovation Plan (SHIP), Delivery System Reform Incentive Payment (DSRIP) Program, or the NYS Community Health Indicator Reports (CHIRS). An additional 40 important health indicators are also included. The indicators are organized by the Priority Area of the Prevention Agenda and are reported statewide, by region, and by county.

Data Collection Methodology, Sampling and Weighting

The data collection methods for the 2014 eBRFSS aligned with the CDC's standard annual BRFSS methods. The 2014 eBRFSS questionnaire used standard questions from the BRFSS. Survey interviews were conducted in both English and Spanish. There were 31,690 completed interviews.

The sampling plan for the eBRFSS was developed to result in valid health indicator estimates for New York City (NYC) and each of the 57 counties outside NYC. The sampling approach stratified landlines by county and implemented a disproportionate stratified sampling design that accounted for both listed-households and unlisted numbers. Cell phone households were accounted for through additional strata that covered contiguous groups of counties.

Data were weighted to represent the population using a methodology known as iterative proportional fitting (raking). Raking adjusted the data so that groups underrepresented in the sample were more accurately represented in the estimated rates. Raking also enabled surveys conducted by cell phone to be included in the weighting and to accurately match sample distributions of specified demographic characteristics of the population. The raking categories included in the eBRFSS were: age, gender, race/ethnicity, education, marital status, owner/renter status, telephone usage (i.e. landline and cell phone combinations), and county of residence.

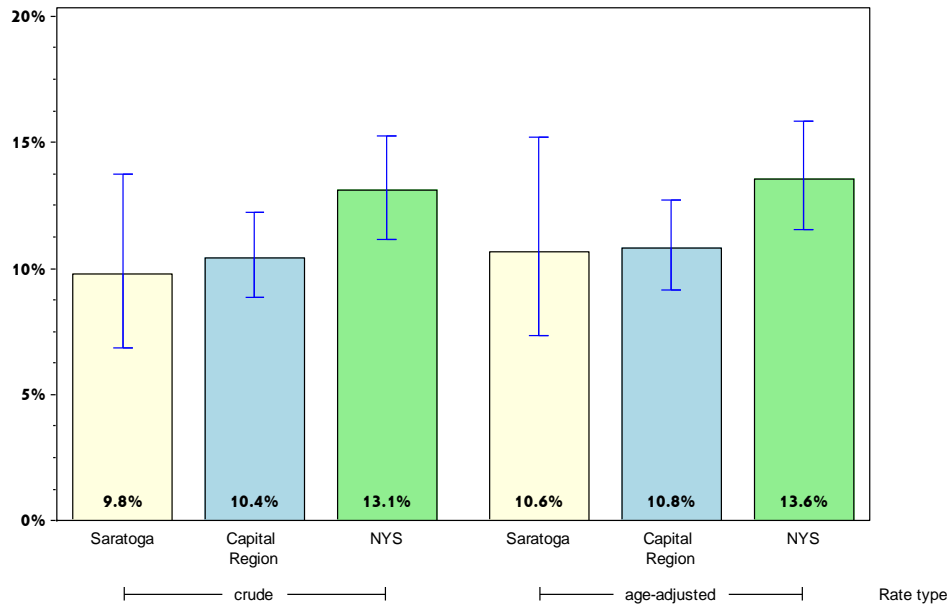
Limitations of Data Use:

During data analysis, criteria were applied to suppress rates based on too few surveys to be reliable and to identify rates that are highly variable. Rates in which less than 10 respondents were in the numerator or less than 50 respondents were in the denominator were considered unreliable and suppressed from reporting. Rates considered to have high variability due to having confidence limits greater than $\pm 10\%$ are noted.

Saratoga

Improve Health Status and Reduce Health Disparities

Percentage of adults who did not receive medical care because of cost*



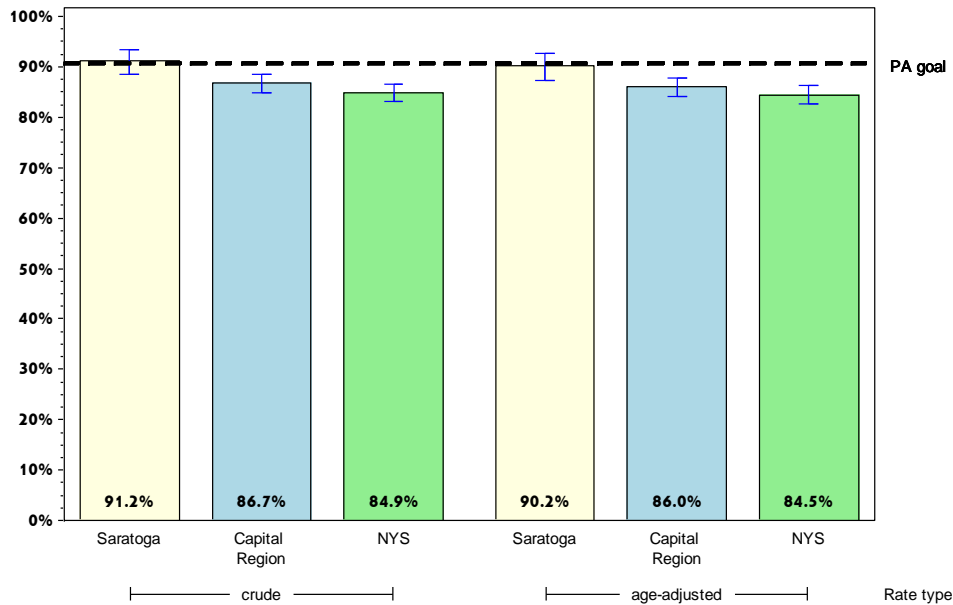
	Saratoga County			Capital Region		
	Est. # of Adults	Percent	95% CI	Est. # of Adults	Percent	95% CI
Total	16,983	9.8	(6.9-13.7)	78,780	10.4	(8.9-12.2)
Age		#				
18-24				9,000	9.5	(5.8-15.1)
25-34	4,667	18.8 [^]	(10.6-31.0)	21,597	17.3	(12.2-23.9)
35-44	3,899	12.9 [^]	(4.8-30.0)	12,616	11.0	(7.4-16.0)
45-64	4,699	7.3	(4.2-12.4)	29,082	11.0	(8.6-14.1)
65+	994	3.0	(1.6-5.8)	6,173	4.3	(2.9-6.2)
Race						
White, NH	14,123	8.7	(6.1-12.1)	61,538	9.6	(7.9-11.5)
Black, NH		#		5,810	15.6	(10.2-23.1)
Hispanic		#		6,161	24.0	(16.3-33.9)
Other, NH		#		5,270	10.6 [^]	(4.3-24.0)
Sex						
male	6,160	7.3	(4.3-12.1)	35,709	9.7	(7.5-12.5)
female	10,822	12.1	(7.6-18.8)	43,071	11.1	(9.0-13.6)
Age-adjusted^{&}		10.6	(7.3-15.2)		10.8	(9.2-12.7)

* Among people needing to see a doctor in the past 12 months
 & Percent is age-adjusted to the 2000 United States Population.
 # Rates with <10 in the numerator or <50 in the denominator are suppressed.
 ^ Highly variable rate (confidence interval with a half-width greater than 10).

Saratoga

Improve Health Status and Reduce Health Disparities

Percentage of adults who have a regular health care provider



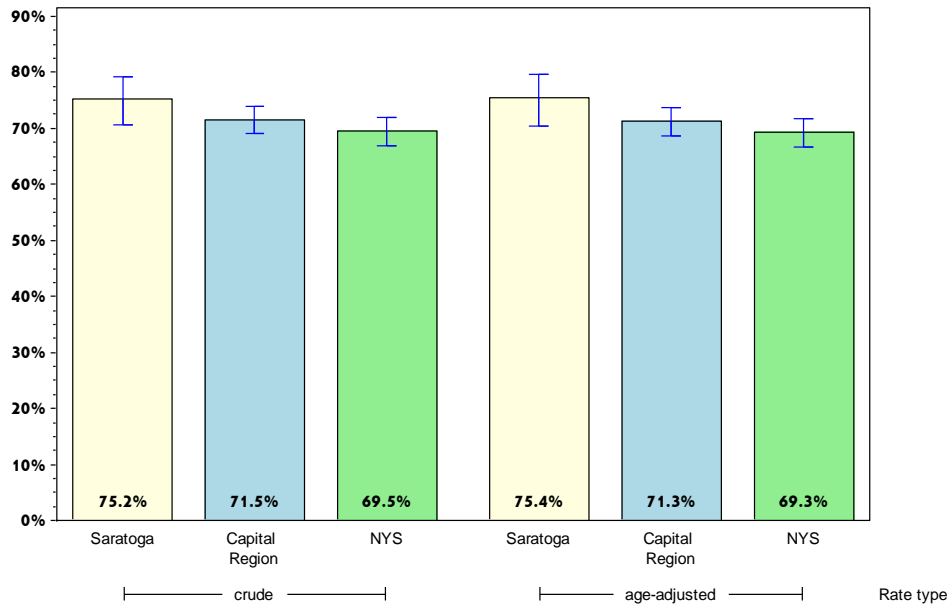
	Saratoga County			Capital Region		
	Est. # of Adults	Percent	95% CI	Est. # of Adults	Percent	95% CI
Total	158,022	91.2	(88.4-93.3)	655,372	86.7	(84.8-88.4)
Age		#				
18-24		#		69,621	73.2	(64.4-80.5)
25-34	19,035	76.6 [^]	(64.7-85.4)	89,783	71.5	(64.8-77.5)
35-44	27,622	91.2	(84.6-95.2)	102,018	88.6	(84.5-91.7)
45-64	59,495	93.1	(88.1-96.1)	241,515	92.1	(89.9-93.9)
65+	31,953	97.6	(95.0-98.9)	140,729	97.2	(96.0-98.1)
Race						
White, NH	149,606	91.9	(89.2-94.0)	563,297	87.5	(85.5-89.3)
Black, NH		#		27,716	74.9 [^]	(61.2-85.0)
Hispanic		#		20,329	79.8	(71.9-86.0)
Other, NH		#		44,030	88.6	(81.8-93.0)
Sex						
male	73,145	86.8	(81.8-90.6)	296,915	81.0	(77.7-84.0)
female	84,877	95.3	(92.6-97.1)	358,457	92.0	(90.1-93.6)
Age-adjusted^{&}		90.2	(87.2-92.6)		86.0	(84.1-87.8)

& Percent is age-adjusted to the 2000 United States Population.
 # Rates with <10 in the numerator or <50 in the denominator are suppressed.
 ^ Highly variable rate (confidence interval with a half-width greater than 10).

Saratoga

Improve Health Status and Reduce Health Disparities

Percentage of adults who had a dentist visit within the past year



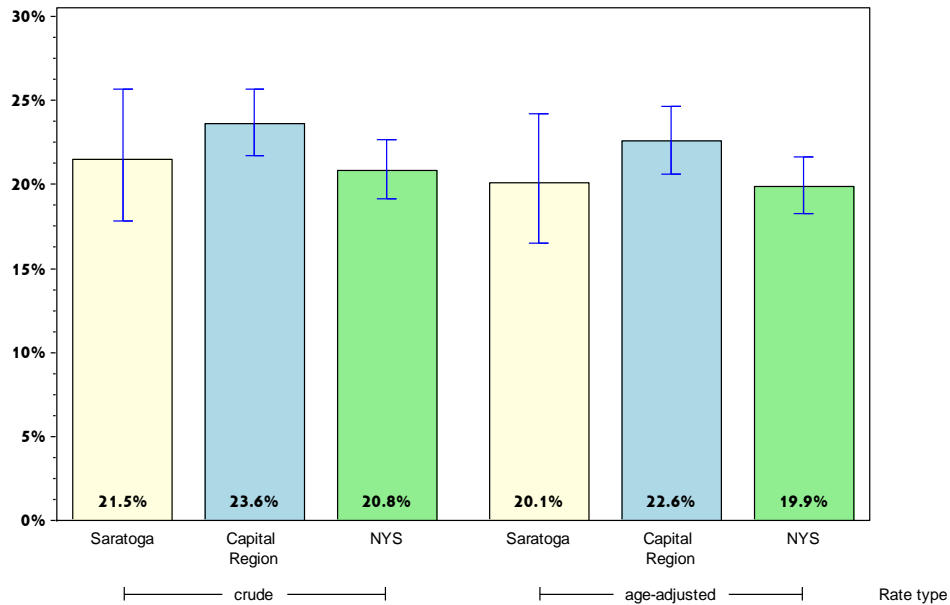
	Saratoga County			Capital Region		
	Est. # of Adults	Percent	95% CI	Est. # of Adults	Percent	95% CI
Total	121,040	75.2	(70.6-79.2)	503,799	71.5	(69.1-73.8)
Age		#				
18-24		#		60,059	72.7 [^]	(61.6-81.5)
25-34	17,292	72.9 [^]	(56.3-84.9)	80,087	68.6	(61.6-75.0)
35-44	22,570	77.3 [^]	(66.5-85.4)	80,262	72.9	(66.8-78.3)
45-64	46,944	78.6	(71.7-84.1)	183,034	73.5	(69.8-76.8)
65+	20,100	64.8	(56.7-72.1)	90,249	67.0	(63.2-70.7)
Race						
White, NH	113,893	75.4	(70.7-79.6)	436,972	72.6	(70.0-75.0)
Black, NH		#		17,633	53.0 [^]	(40.6-64.9)
Hispanic		#		14,975	67.1 [^]	(56.8-76.0)
Other, NH		#		34,218	73.1 [^]	(60.5-82.7)
Sex						
male	57,363	72.9	(65.8-78.9)	231,254	67.5	(63.6-71.1)
female	63,677	77.4	(71.5-82.4)	272,544	75.4	(72.6-78.0)
Age-adjusted^{&}		75.4	(70.4-79.7)		71.3	(68.7-73.7)

& Percent is age-adjusted to the 2000 United States Population.
 # Rates with <10 in the numerator or <50 in the denominator are suppressed.
 ^ Highly variable rate (confidence interval with a half-width greater than 10).

Saratoga

Improve Health Status and Reduce Health Disparities

Percentage of adults living with a disability*



	Saratoga County			Capital Region		
	Est. # of Adults	Percent	95% CI	Est. # of Adults	Percent	95% CI
Total	36,548	21.5	(17.8-25.6)	175,208	23.6	(21.7-25.7)
Age		#				
18-24		#		8,717	9.4	(5.9-14.5)
25-34	3,971	16.2 [^]	(6.8-33.9)	20,013	16.5	(11.4-23.4)
35-44	2,839	9.5	(5.2-16.7)	18,192	16.2	(12.0-21.5)
45-64	15,831	25.3	(19.3-32.3)	74,792	28.8	(25.5-32.3)
65+	11,859	36.6	(28.9-45.0)	51,545	36.3	(32.6-40.1)
Race						
White, NH	35,673	22.3	(18.5-26.7)	152,818	24.2	(22.1-26.4)
Black, NH		#		8,407	23.4	(16.1-32.7)
Hispanic		#		6,619	26.5 [^]	(18.4-36.7)
Other, NH		#		7,364	14.9 [^]	(8.4-25.1)
Sex						
male	20,756	25.0	(19.2-31.9)	83,089	23.2	(20.3-26.4)
female	15,793	18.1	(14.1-22.9)	92,118	24.1	(21.6-26.8)
Age-adjusted^{&}		20.1	(16.5-24.2)		22.6	(20.6-24.6)

* Limited activities (physical, mental, or emotional problems); need of special equipment (e.g. cane, wheel chair).

& Percent is age-adjusted to the 2000 United States Population.

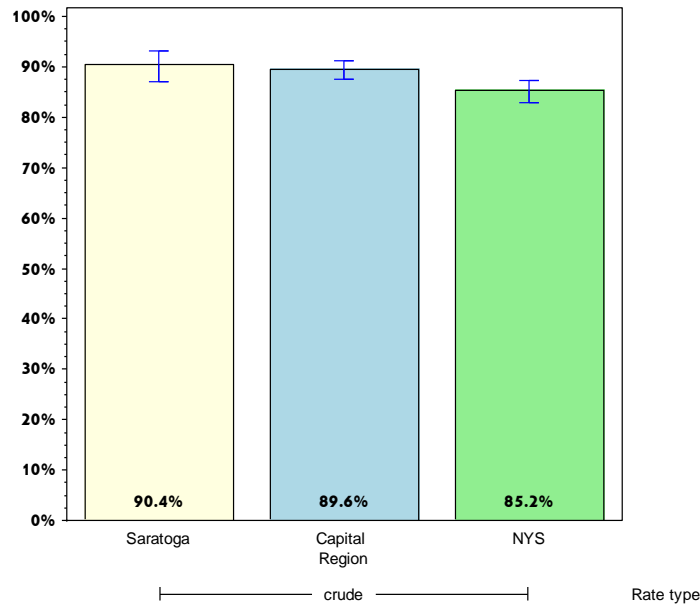
Rates with <10 in the numerator or <50 in the denominator are suppressed.

[^] Highly variable rate (confidence interval with a half-width greater than 10).

Saratoga

Improve Health Status and Reduce Health Disparities

Percentage of adults aged 18-64 years with healthcare coverage



Saratoga County

Capital Region

	Est. # of Adults	Percent	95% CI	Est. # of Adults	Percent	95% CI
Total	124,964	90.4	(86.9-93.1)	534,574	89.6	(87.6-91.2)
Age⁺						
18-24						
25-34						
35-44						
45-64						
65+						
Race						
White, NH	116,258	90.5	(86.9-93.3)	453,130	90.5	(88.4-92.3)
Black, NH		#		27,834	87.0	(77.3-93.0)
Hispanic		#		16,505	68.9 [^]	(57.4-78.4)
Other, NH		#		37,106	91.8 [^]	(79.9-96.9)
Sex						
male	61,080	88.9	(83.2-92.9)	262,286	87.7	(84.6-90.2)
female	63,883	91.9	(87.3-94.9)	272,288	91.5	(88.8-93.5)
Age-adjusted^{+,&}						

& Percent is age-adjusted to the 2000 United States Population.

+ Age-adjusted and age specific percent not generated for health indicators with age range limits.

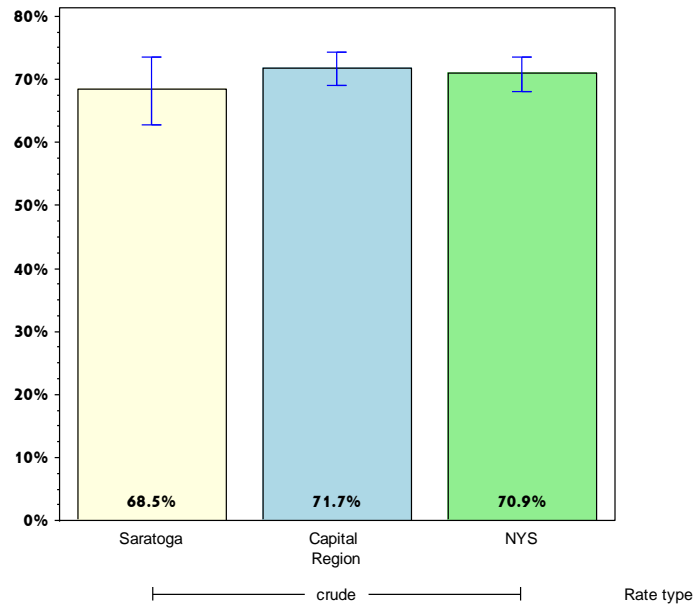
Rates with <10 in the numerator or <50 in the denominator are suppressed.

[^] Highly variable rate (confidence interval with a half-width greater than 10).

Saratoga

Improve Health Status and Reduce Health Disparities

Percentage of adults aged 18-64 years who saw a doctor for a routine checkup within the last year



Saratoga County

Capital Region

	Est. # of Adults	Percent	95% CI	Est. # of Adults	Percent	95% CI
Total Age⁺	94,884	68.5	(62.9-73.6)	426,846	71.7	(69.1-74.2)
18-24						
25-34						
35-44						
45-64						
65+						
Race						
White, NH	88,192	68.5	(62.6-73.8)	350,182	70.2	(67.3-73.0)
Black, NH		#		25,151	78.0 [^]	(67.5-85.8)
Hispanic		#		17,511	72.3	(62.4-80.4)
Other, NH		#		34,002	85.1	(76.5-91.0)
Sex						
male	43,059	62.4	(54.6-69.5)	198,036	66.4	(62.4-70.2)
female	51,825	74.5	(66.4-81.2)	228,809	77.1	(73.6-80.3)
Age-adjusted^{+,&}						

& Percent is age-adjusted to the 2000 United States Population.

+ Age-adjusted and age specific percent not generated for health indicators with age range limits.

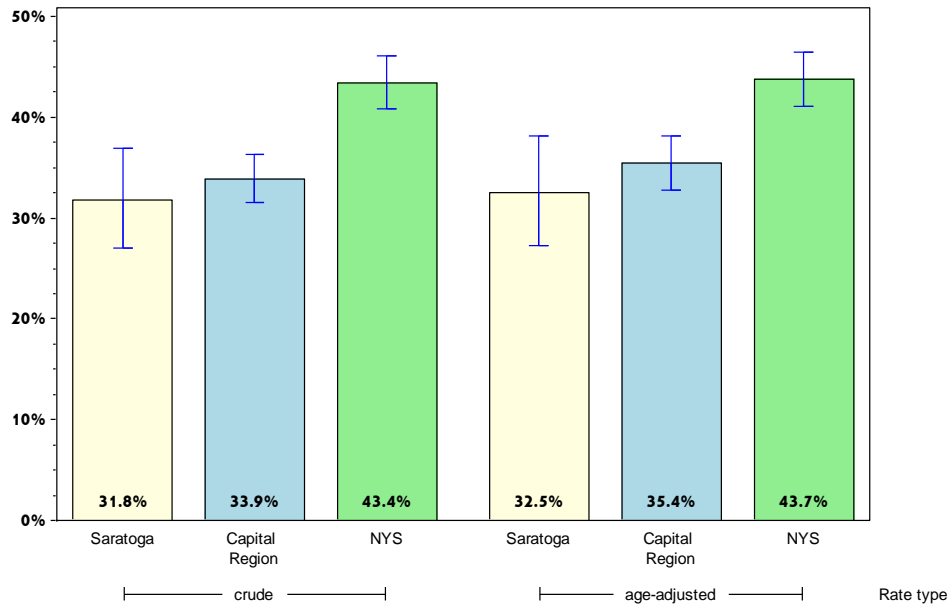
Rates with <10 in the numerator or <50 in the denominator are suppressed.

^ Highly variable rate (confidence interval with a half-width greater than 10).

Saratoga

Improve Health Status and Reduce Health Disparities

Percentage of adults experiencing housing insecurity in the past 12 months*



Saratoga County

Capital Region

	Est. # of Adults	Percent	95% CI	Est. # of Adults	Percent	95% CI
Total	50,334	31.8	(27.0-36.9)	227,646	33.9	(31.5-36.4)
Age		#				
18-24		#		25,551	37.1 [^]	(27.3-48.2)
25-34	7,011	31.4 [^]	(20.3-45.2)	46,389	43.5	(36.8-50.5)
35-44	12,961	44.2 [^]	(31.9-57.4)	44,836	41.9	(35.5-48.6)
45-64	19,645	32.8	(26.4-39.8)	84,567	34.2	(30.7-38.0)
65+	4,533	14.9	(10.0-21.6)	25,225	19.1	(16.3-22.3)
Race						
White, NH	45,779	30.7	(26.0-35.8)	186,009	32.2	(29.7-34.9)
Black, NH		#		16,688	57.1 [^]	(47.0-66.6)
Hispanic		#		10,980	49.7 [^]	(39.3-60.2)
Other, NH		#		13,970	32.2 [^]	(21.0-46.0)
Sex						
male	24,152	31.7	(25.3-38.9)	100,235	31.3	(27.8-35.0)
female	26,181	31.8	(25.1-39.3)	127,411	36.3	(33.1-39.6)
Age-adjusted^{&}		32.5	(27.3-38.1)		35.4	(32.8-38.1)

* Worried or stressed about having enough money to pay for rent or mortgage.

& Percent is age-adjusted to the 2000 United States Population.

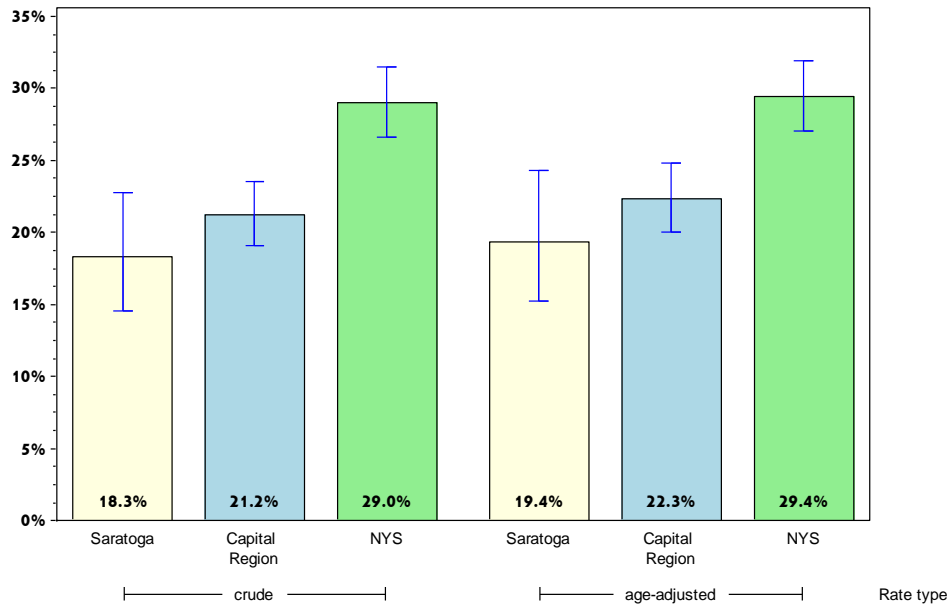
Rates with <10 in the numerator or <50 in the denominator are suppressed.

[^] Highly variable rate (confidence interval with a half-width greater than 10).

Saratoga

Improve Health Status and Reduce Health Disparities

Percentage of adults experiencing food insecurity in the past 12 months*



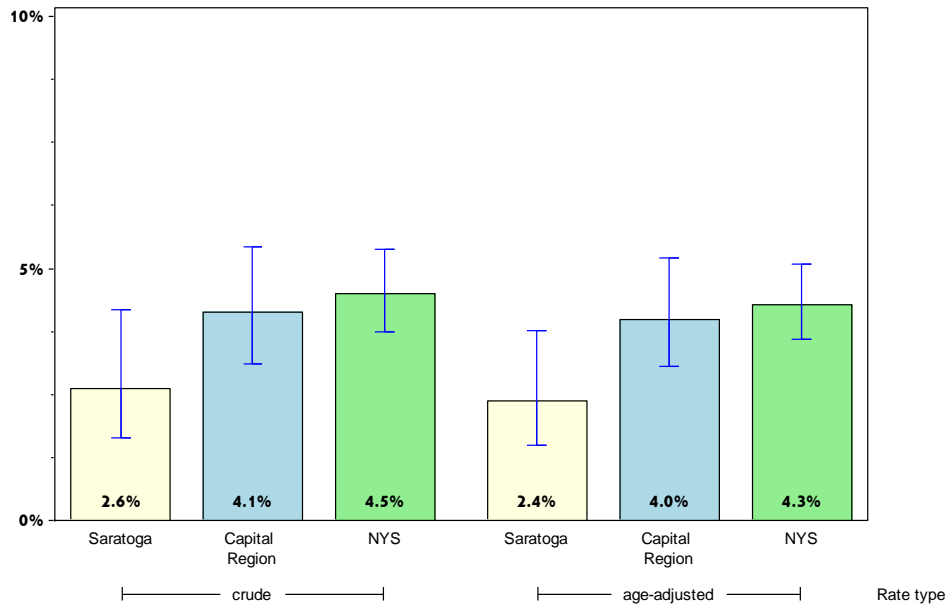
	Saratoga County			Capital Region		
	Est. # of Adults	Percent	95% CI	Est. # of Adults	Percent	95% CI
Total	30,419	18.3	(14.5-22.8)	153,218	21.2	(19.1-23.6)
Age		#				
18-24		#		23,761	27.0	(19.2-36.7)
25-34	6,293	26.2 [^]	(16.3-39.4)	30,679	25.7	(20.3-32.0)
35-44	8,407	28.5 [^]	(17.1-43.6)	31,379	28.4	(22.6-35.1)
45-64	10,053	16.4	(11.8-22.3)	54,262	21.4	(18.0-25.1)
65+	2,541	8.0	(4.3-14.3)	12,444	9.0	(6.9-11.6)
Race						
White, NH	26,878	17.2	(13.6-21.5)	117,239	19.0	(16.9-21.2)
Black, NH		#		13,625	39.9 [^]	(28.9-52.1)
Hispanic		#		8,032	34.9 [^]	(25.9-45.1)
Other, NH		#		14,323	30.8 [^]	(17.5-48.2)
Sex						
male	14,139	17.5	(12.5-24.0)	66,917	19.2	(15.9-23.0)
female	16,280	19.0	(13.8-25.6)	86,301	23.2	(20.5-26.1)
Age-adjusted^{&}		19.4	(15.2-24.3)		22.3	(20.0-24.8)

* Worried or stressed about having enough money to buy nutritious meals.
 & Percent is age-adjusted to the 2000 United States Population.
 # Rates with <10 in the numerator or <50 in the denominator are suppressed.
 ^ Highly variable rate (confidence interval with a half-width greater than 10).

Saratoga

Improve Health Status and Reduce Health Disparities

Percentage of adults with poor self-reported health



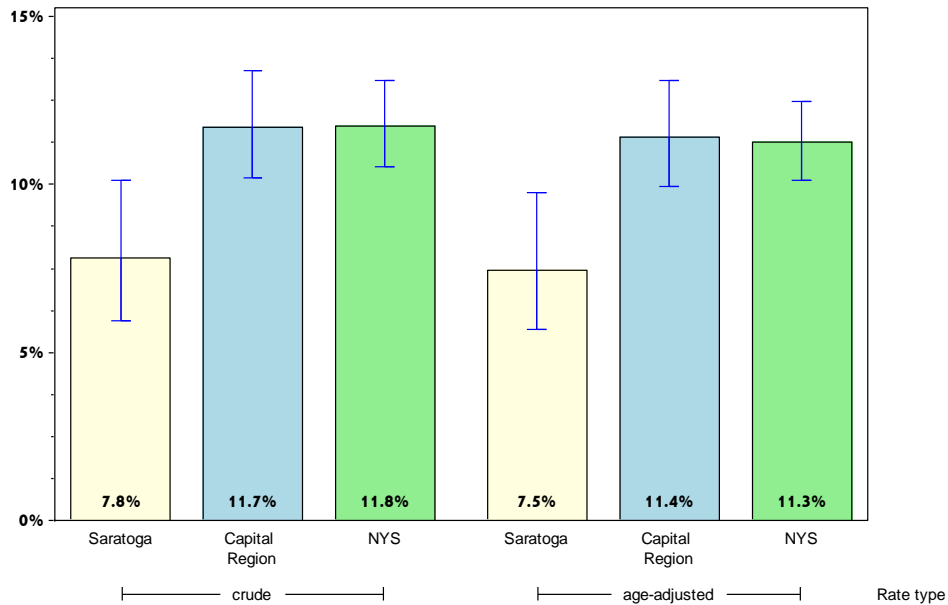
	Saratoga County			Capital Region		
	Est. # of Adults	Percent	95% CI	Est. # of Adults	Percent	95% CI
Total	4,528	2.6	(1.6-4.2)	31,086	4.1	(3.1-5.4)
Age		#			#	
18-24		#			#	
25-34		#			#	
35-44		#		4,002	3.5	(1.9-6.5)
45-64		#		15,190	5.8	(3.6-9.2)
65+	2,456	7.5	(4.0-13.6)	8,158	5.7	(4.1-7.8)
Race						
White, NH	4,088	2.5	(1.5-4.1)	21,951	3.4	(2.6-4.5)
Black, NH		#		3,013	8.1	(3.9-16.2)
Hispanic		#			#	
Other, NH		#		5,390	10.8 [^]	(3.7-27.7)
Sex						
male	1,701	2.0	(1.0-4.2)	12,669	3.5	(2.2-5.4)
female	2,826	3.2	(1.7-5.8)	18,417	4.7	(3.3-6.7)
Age-adjusted^{&}		2.4	(1.5-3.8)		4.0	(3.0-5.2)

& Percent is age-adjusted to the 2000 United States Population.
 # Rates with <10 in the numerator or <50 in the denominator are suppressed.
 ^ Highly variable rate (confidence interval with a half-width greater than 10).

Saratoga

Improve Health Status and Reduce Health Disparities

Percentage of adults who report 14 or more days of poor physical health*



Saratoga County

Capital Region

	Est. # of Adults	Percent	95% CI	Est. # of Adults	Percent	95% CI
Total	13,392	7.8	(6.0-10.1)	86,530	11.7	(10.2-13.4)
Age		#				
18-24		#		6,770	7.2	(3.3-14.8)
25-34		#		7,049	5.8	(3.7-8.9)
35-44	2,380	7.9	(3.7-15.8)	11,350	9.9	(6.8-14.3)
45-64	5,473	8.6	(5.9-12.5)	36,240	14.2	(11.4-17.4)
65+	4,370	13.7	(8.8-20.8)	24,874	17.8	(14.8-21.3)
Race						
White, NH	12,525	7.8	(5.9-10.1)	67,869	10.8	(9.5-12.2)
Black, NH		#		9,363	25.8 [^]	(14.7-41.2)
Hispanic		#		2,326	9.8	(4.9-18.7)
Other, NH		#		6,972	14.1 [^]	(6.0-29.7)
Sex						
male	5,836	6.9	(4.6-10.3)	36,753	10.2	(8.0-12.9)
female	7,556	8.6	(6.0-12.2)	49,778	13.1	(11.2-15.3)
Age-adjusted^{&}		7.5	(5.7-9.7)		11.4	(9.9-13.1)

* Out of the past 30 days.

& Percent is age-adjusted to the 2000 United States Population.

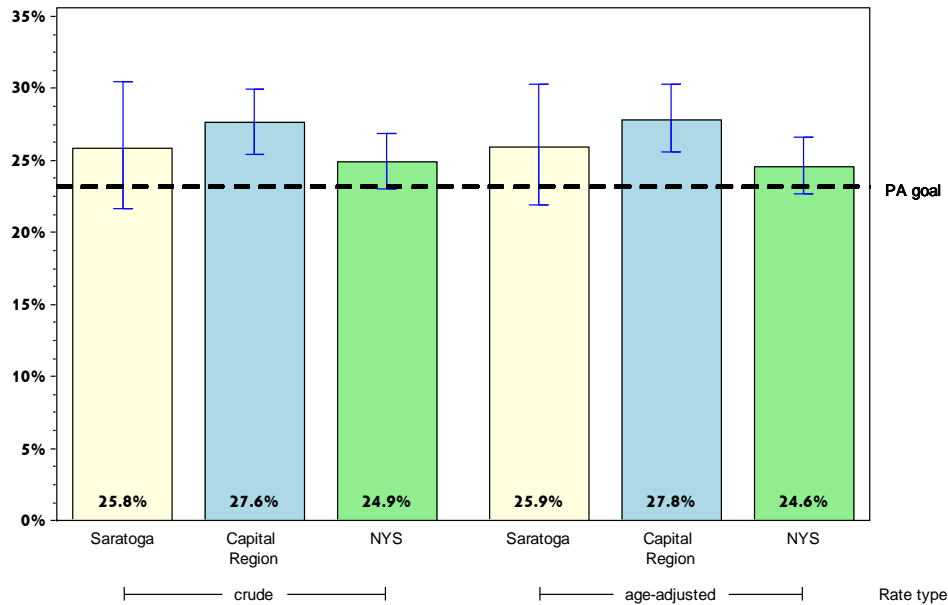
Rates with <10 in the numerator or <50 in the denominator are suppressed.

[^] Highly variable rate (confidence interval with a half-width greater than 10).

Saratoga

Prevent Chronic Diseases

Percentage of adults who are obese*



Saratoga County

Capital Region

	Est. # of Adults	Percent	95% CI	Est. # of Adults	Percent	95% CI
Total	41,920	25.8	(21.6-30.5)	196,015	27.6	(25.5-29.9)
Age						
18-24	#	#	#	12,899	14.4	(8.4-23.4)
25-34	3,755	16.8 [^]	(9.8-27.3)	27,900	24.7	(19.0-31.4)
35-44	11,828	41.4 [^]	(29.1-54.9)	36,257	33.5	(27.6-40.0)
45-64	16,660	27.1	(20.8-34.5)	84,116	33.3	(29.8-37.0)
65+	7,920	26.5	(19.8-34.4)	33,329	24.5	(21.4-27.9)
Race						
White, NH	39,299	25.8	(21.7-30.4)	167,713	27.7	(25.4-30.1)
Black, NH	#	#	#	12,819	38.0 [^]	(27.3-50.1)
Hispanic	#	#	#	6,873	28.0	(20.4-37.1)
Other, NH	#	#	#	8,610	18.6 [^]	(10.1-31.8)
Sex						
male	23,335	27.9	(22.0-34.7)	98,578	27.4	(24.2-30.7)
female	18,586	23.6	(18.1-30.2)	97,437	27.9	(24.9-31.1)
Age-adjusted^{&}		25.9	(21.9-30.3)		27.8	(25.6-30.3)

* Obesity defined as a Body Mass Index (BMI) ≥ 30 . BMI is calculated based on weight and height.

& Percent is age-adjusted to the 2000 United States Population.

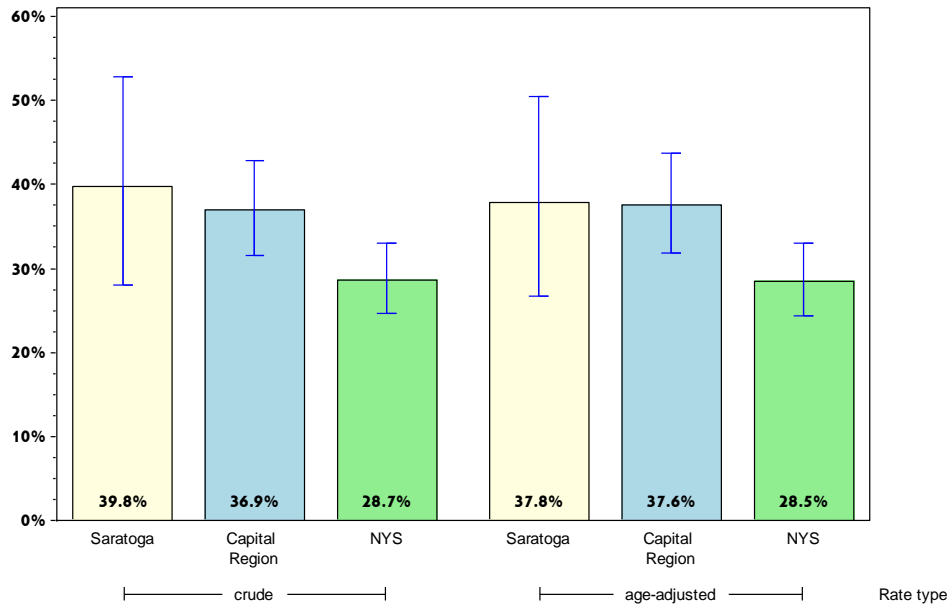
Rates with <10 in the numerator or <50 in the denominator are suppressed.

[^] Highly variable rate (confidence interval with a half-width greater than 10).

Saratoga

Prevent Chronic Diseases

Percentage of adults with an annual household income less than \$25,000 who are obese*



Saratoga County

Capital Region

	Est. # of Adults	Percent	95% CI	Est. # of Adults	Percent	95% CI
Total	10,618	39.8 [^]	(28.1-52.8)	54,587	36.9	(31.5-42.8)
Age						
18-24		#		3,020	17.4 [^]	(8.4-32.5)
25-34		#		10,222	39.3 [^]	(24.9-55.8)
35-44		#		7,713	41.2 [^]	(25.5-58.9)
45-64		#		23,403	48.3 [^]	(38.0-58.8)
65+	3,307	40.4 [^]	(26.0-56.6)	10,229	27.6	(21.5-34.7)
Race						
White, NH	8,678	37.0 [^]	(27.0-48.2)	41,621	36.5	(30.4-43.0)
Black, NH		#		4,238	36.2 [^]	(22.1-53.2)
Hispanic		#		2,717	28.5 [^]	(16.7-44.3)
Other, NH		#			#	
Sex						
male	3,220	26.5 [^]	(13.4-45.7)	20,376	30.7	(22.4-40.6)
female	7,398	50.8 [^]	(34.9-66.6)	34,212	42.0	(35.0-49.3)
Age-adjusted^{&}		37.8 [^]	(26.7-50.4)		37.6	(31.8-43.7)

* Obesity defined as a Body Mass Index (BMI) ≥ 30 . BMI is calculated based on weight and height.

& Percent is age-adjusted to the 2000 United States Population.

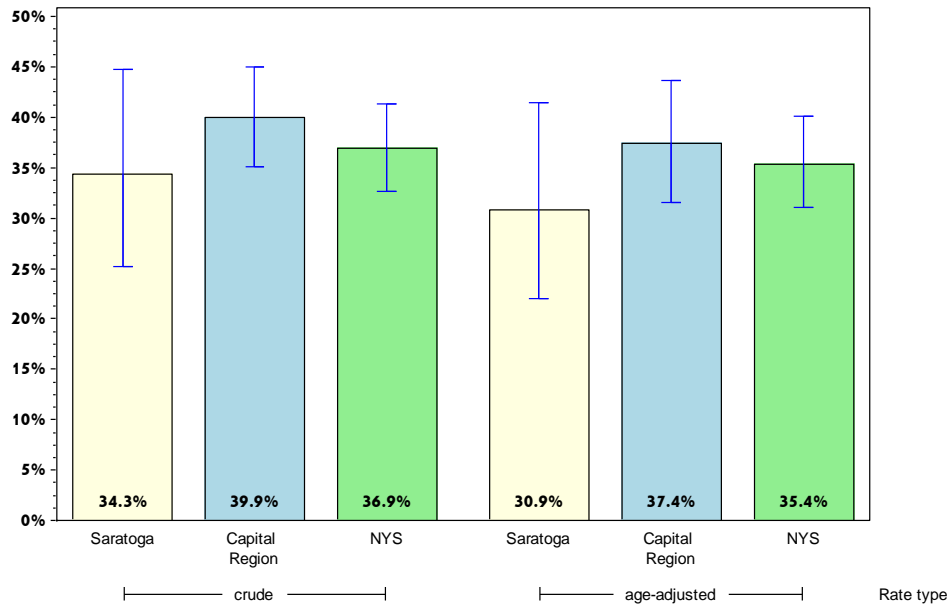
Rates with <10 in the numerator or <50 in the denominator are suppressed.

[^] Highly variable rate (confidence interval with a half-width greater than 10).

Saratoga

Prevent Chronic Diseases

Percentage of adults living with a disability who are obese*



	Saratoga County			Capital Region		
	Est. # of Adults	Percent	95% CI	Est. # of Adults	Percent	95% CI
Total	11,697	34.3 [^]	(25.2-44.7)	65,790	39.9	(35.1-45.0)
Age		#			#	
18-24		#			#	
25-34		#		7,184	38.8 [^]	(19.6-62.4)
35-44		#		7,077	41.0 [^]	(26.7-56.9)
45-64	5,954	39.7 [^]	(25.4-56.0)	33,361	46.8	(39.6-54.2)
65+	4,059	37.1 [^]	(24.0-52.4)	17,293	35.7	(29.7-42.3)
Race						
White, NH	11,588	34.9 [^]	(25.6-45.5)	55,500	38.7	(33.6-44.2)
Black, NH		#			#	
Hispanic		#			#	
Other, NH		#			#	
Sex						
male	6,734	33.1 [^]	(20.7-48.4)	30,702	37.8	(30.6-45.6)
female	4,963	36.1 [^]	(24.6-49.4)	35,087	42.0	(35.7-48.5)
Age-adjusted^{&}		30.9 [^]	(22.0-41.4)		37.4	(31.6-43.7)

* Obesity defined as a Body Mass Index (BMI) ≥ 30 . BMI is calculated based on weight and height. Limited activities (physical, mental, or emotional problems); need of special equipment (e.g. cane, wheel chair).

& Percent is age-adjusted to the 2000 United States Population.

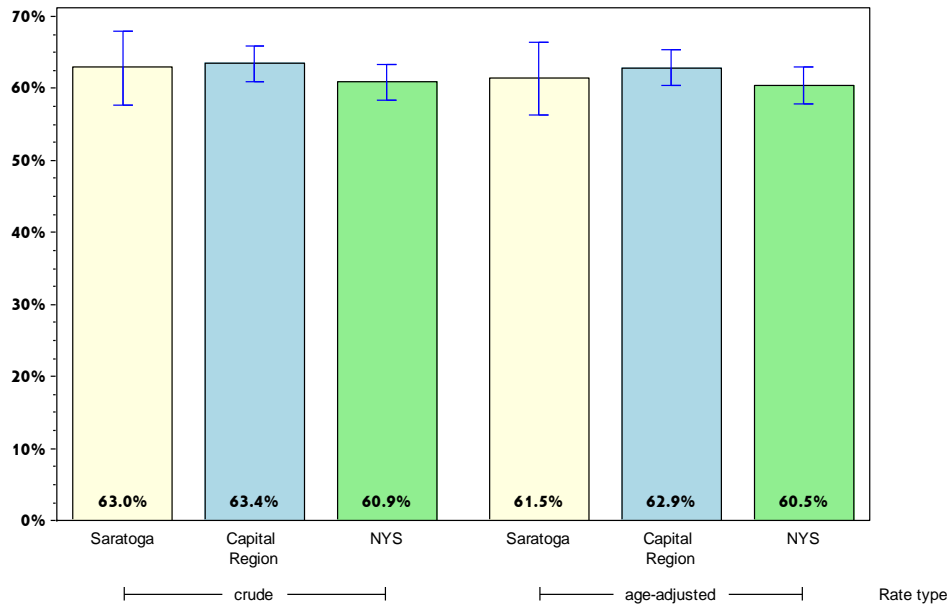
Rates with <10 in the numerator or <50 in the denominator are suppressed.

[^] Highly variable rate (confidence interval with a half-width greater than 10).

Saratoga

Prevent Chronic Diseases

Percentage of adults overweight or obese*



	Saratoga County			Capital Region		
	Est. # of Adults	Percent	95% CI	Est. # of Adults	Percent	95% CI
Total	102,238	63.0	(57.7-67.9)	449,862	63.4	(60.9-65.8)
Age		#				
18-24		#		36,543	40.7 [^]	(31.2-51.1)
25-34	11,882	53.0 [^]	(38.4-67.2)	65,156	57.7	(51.1-64.0)
35-44	18,388	64.4 [^]	(52.2-75.0)	71,436	66.1	(59.8-71.8)
45-64	44,068	71.6	(64.7-77.6)	182,293	72.2	(68.8-75.3)
65+	21,362	71.4	(63.3-78.4)	88,147	64.8	(60.7-68.6)
Race						
White, NH	95,916	63.0	(57.5-68.1)	381,643	63.1	(60.5-65.6)
Black, NH		#		25,401	75.3	(65.7-83.0)
Hispanic		#		17,407	70.9 [^]	(60.2-79.7)
Other, NH		#		25,411	55.0 [^]	(40.4-68.8)
Sex						
male	59,264	70.9	(64.3-76.7)	249,199	69.2	(65.4-72.7)
female	42,974	54.5	(46.6-62.2)	200,663	57.5	(54.1-60.8)
Age-adjusted^{&}		61.5	(56.4-66.3)		62.9	(60.4-65.3)

* Defined as a Body Mass Index (BMI) >=25. BMI is calculated based on weight and height.

& Percent is age-adjusted to the 2000 United States Population.

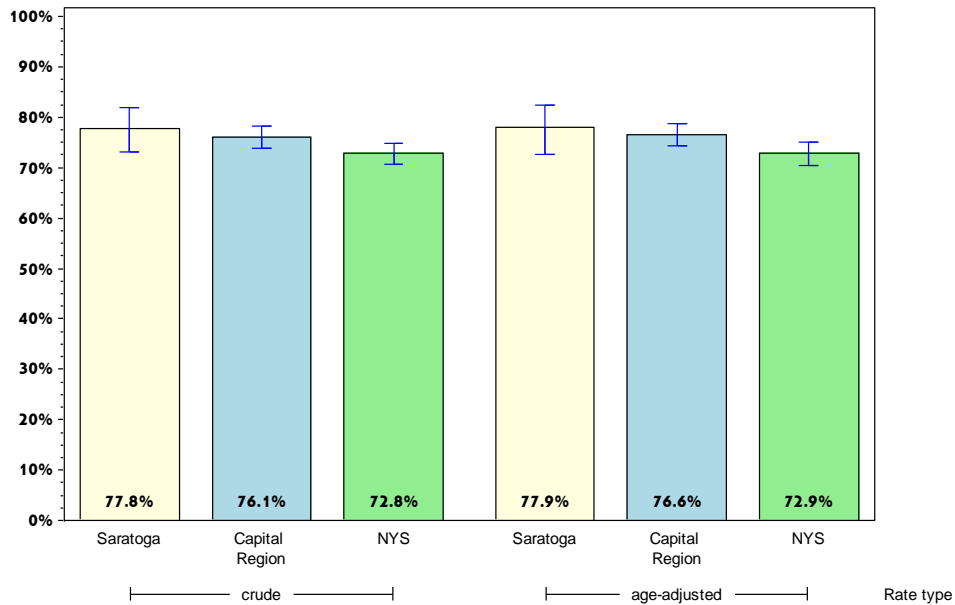
Rates with <10 in the numerator or <50 in the denominator are suppressed.

[^] Highly variable rate (confidence interval with a half-width greater than 10).

Saratoga

Prevent Chronic Diseases

Percentage of adults who participated in leisure time physical activity in the past 30 days*



Saratoga County

Capital Region

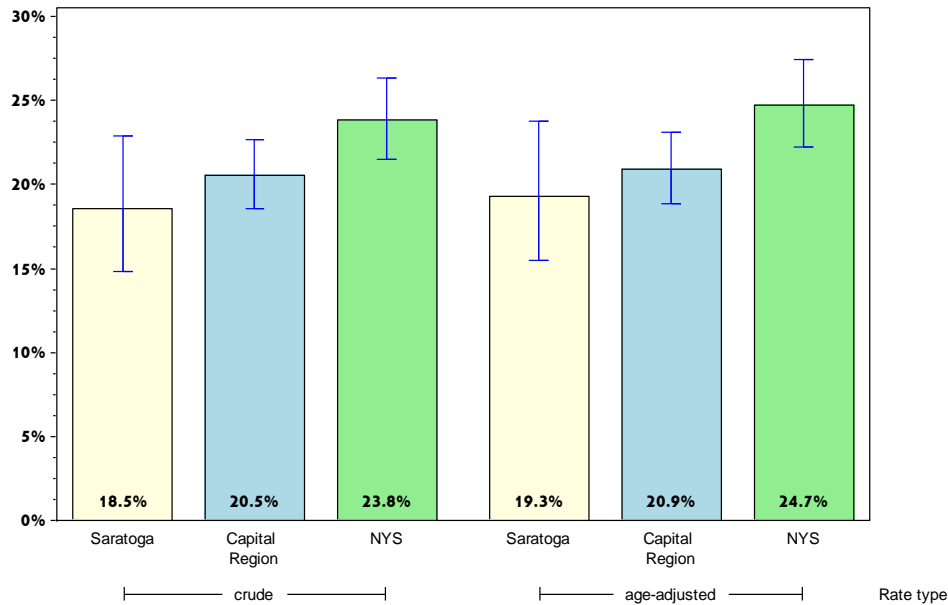
	Est. # of Adults	Percent	95% CI	Est. # of Adults	Percent	95% CI
Total	130,623	77.8	(73.1-81.8)	556,553	76.1	(73.9-78.2)
Age		#				
18-24		#		75,199	82.7 [^]	(71.5-90.1)
25-34	19,045	78.5 [^]	(61.2-89.4)	94,246	78.5	(71.7-84.0)
35-44	23,628	79.7 [^]	(64.7-89.3)	88,206	79.6	(73.8-84.3)
45-64	50,275	81.8	(75.5-86.7)	196,559	76.2	(72.8-79.3)
65+	21,568	66.5	(58.4-73.7)	93,338	66.8	(62.9-70.4)
Race						
White, NH	124,079	78.8	(74.2-82.7)	479,185	76.6	(74.2-78.8)
Black, NH		#		24,322	71.4 [^]	(59.7-80.9)
Hispanic		#		17,336	72.5 [^]	(60.3-82.1)
Other, NH		#		35,711	75.0 [^]	(63.2-84.0)
Sex						
male	64,675	79.6	(72.6-85.2)	272,326	76.8	(73.1-80.1)
female	65,948	76.0	(69.4-81.6)	284,227	75.6	(72.8-78.1)
Age-adjusted^{&}		77.9	(72.7-82.4)		76.6	(74.2-78.8)

* Any physical activities or exercises such as running or walking
 & Percent is age-adjusted to the 2000 United States Population.
 # Rates with <10 in the numerator or <50 in the denominator are suppressed.
 ^ Highly variable rate (confidence interval with a half-width greater than 10).

Saratoga

Prevent Chronic Diseases

Percentage of adults who consume one or more sugary drinks daily*



	Saratoga County			Capital Region		
	Est. # of Adults	Percent	95% CI	Est. # of Adults	Percent	95% CI
Total	30,312	18.5	(14.8-22.9)	146,058	20.5	(18.5-22.7)
Age		#				
18-24		#		28,523	32.9	(24.4-42.8)
25-34	9,583	40.4 [^]	(26.5-56.1)	36,519	31.0	(24.6-38.1)
35-44	2,835	9.7	(5.6-16.4)	18,018	16.3	(12.6-20.9)
45-64	9,063	15.2	(10.8-20.9)	42,321	16.9	(14.4-19.8)
65+	4,573	14.7	(9.7-21.6)	18,870	13.9	(11.5-16.7)
Race						
White, NH	28,741	18.8	(14.9-23.4)	121,145	19.9	(17.8-22.3)
Black, NH		#		10,242	30.3 [^]	(20.6-42.2)
Hispanic		#		8,727	38.5 [^]	(29.0-49.0)
Other, NH		#		5,944	12.5	(7.4-20.3)
Sex						
male	15,674	19.8	(14.4-26.6)	84,851	24.6	(21.5-28.0)
female	14,639	17.4	(12.7-23.4)	61,207	16.7	(14.2-19.5)
Age-adjusted^{&}		19.3	(15.5-23.7)		20.9	(18.8-23.1)

* Sugary drinks include regular soda, and sugar-sweetened drinks.

& Percent is age-adjusted to the 2000 United States Population.

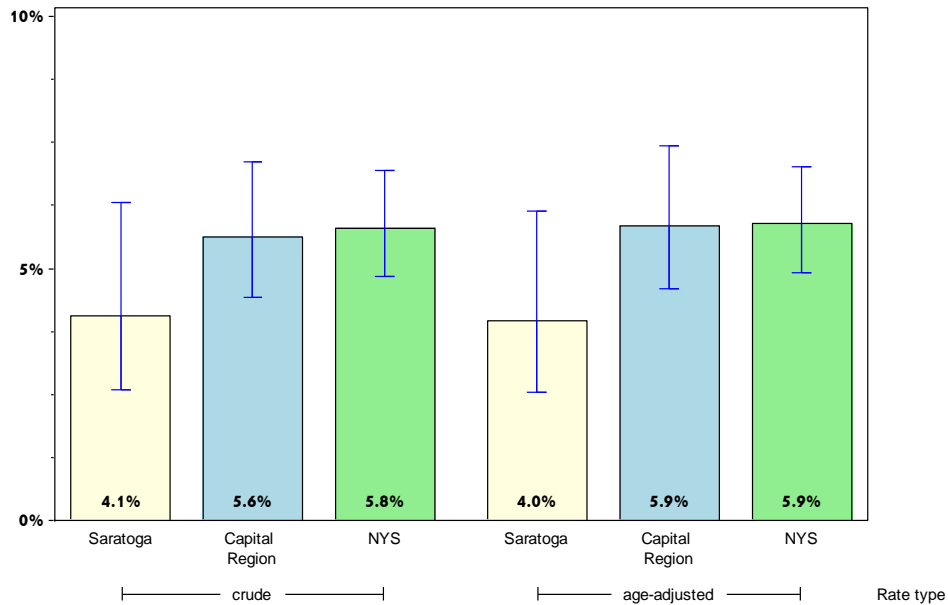
Rates with <10 in the numerator or <50 in the denominator are suppressed.

[^] Highly variable rate (confidence interval with a half-width greater than 10).

Saratoga

Prevent Chronic Diseases

Percentage of adults who consume fast-food three or more times per week



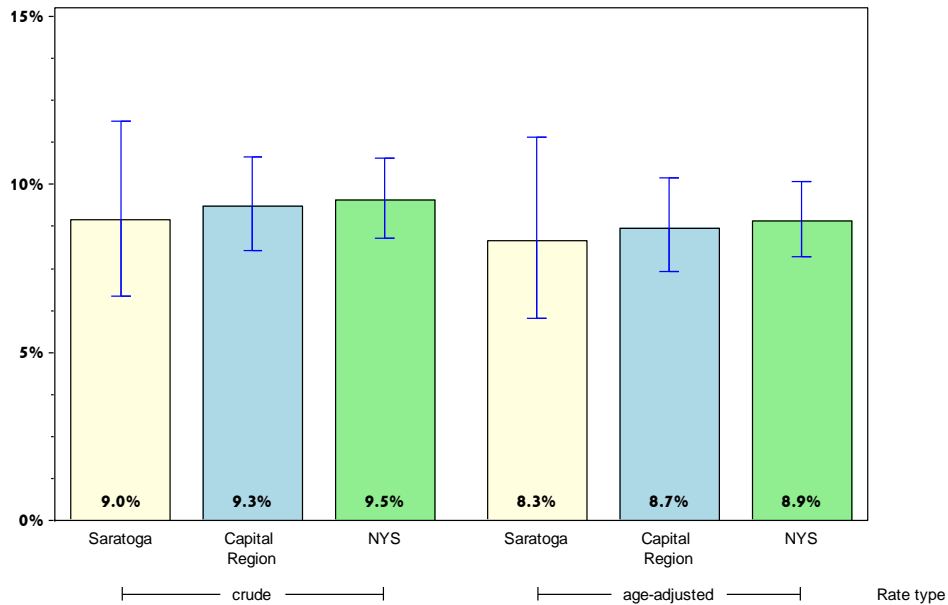
	Saratoga County			Capital Region		
	Est. # of Adults	Percent	95% CI	Est. # of Adults	Percent	95% CI
Total	6,611	4.1	(2.6-6.3)	39,790	5.6	(4.4-7.1)
Age		#				
18-24		#		8,329	9.7	(5.1-17.5)
25-34		#		11,200	9.6	(5.7-15.5)
35-44		#		5,776	5.3	(3.2-8.5)
45-64	2,611	4.4	(1.8-10.3)	10,867	4.4	(2.9-6.5)
65+	1,072	3.5	(1.7-6.9)	3,146	2.3	(1.5-3.6)
Race						
White, NH	6,309	4.1	(2.6-6.5)	31,483	5.2	(4.1-6.6)
Black, NH		#		5,232	15.8 [^]	(6.0-35.5)
Hispanic		#		2,006	9.0	(5.0-15.8)
Other, NH		#			#	
Sex						
male	5,231	6.6	(3.8-11.2)	31,282	9.1	(6.9-12.0)
female	1,380	1.6	(0.9-2.9)	8,509	2.3	(1.7-3.3)
Age-adjusted^{&}		4.0	(2.5-6.1)		5.9	(4.6-7.4)

& Percent is age-adjusted to the 2000 United States Population.
 # Rates with <10 in the numerator or <50 in the denominator are suppressed.
 ^ Highly variable rate (confidence interval with a half-width greater than 10).

Saratoga

Prevent Chronic Diseases

Percentage of adults with physician diagnosed diabetes*



	Saratoga County			Capital Region		
	Est. # of Adults	Percent	95% CI	Est. # of Adults	Percent	95% CI
Total	15,556	9.0	(6.7-11.9)	70,730	9.3	(8.0-10.8)
Age		#			#	
18-24		#			#	
25-34		#			#	
35-44		#		8,295	7.2	(3.8-13.1)
45-64	4,548	7.1	(4.6-10.7)	27,350	10.4	(8.0-13.3)
65+	7,632	23.3	(17.1-30.8)	32,001	22.1	(18.9-25.7)
Race						
White, NH	14,802	9.1	(6.7-12.2)	56,938	8.8	(7.6-10.2)
Black, NH		#		5,143	13.9	(8.7-21.3)
Hispanic		#		2,015	7.9	(4.6-13.0)
Other, NH		#		6,634	13.3 [^]	(5.6-28.3)
Sex						
male	10,179	12.0	(8.1-17.5)	40,032	10.9	(8.7-13.5)
female	5,377	6.0	(4.2-8.6)	30,698	7.9	(6.5-9.4)
Age-adjusted^{&}		8.3	(6.0-11.4)		8.7	(7.4-10.2)

* As diagnosed by a health professional.

& Percent is age-adjusted to the 2000 United States Population.

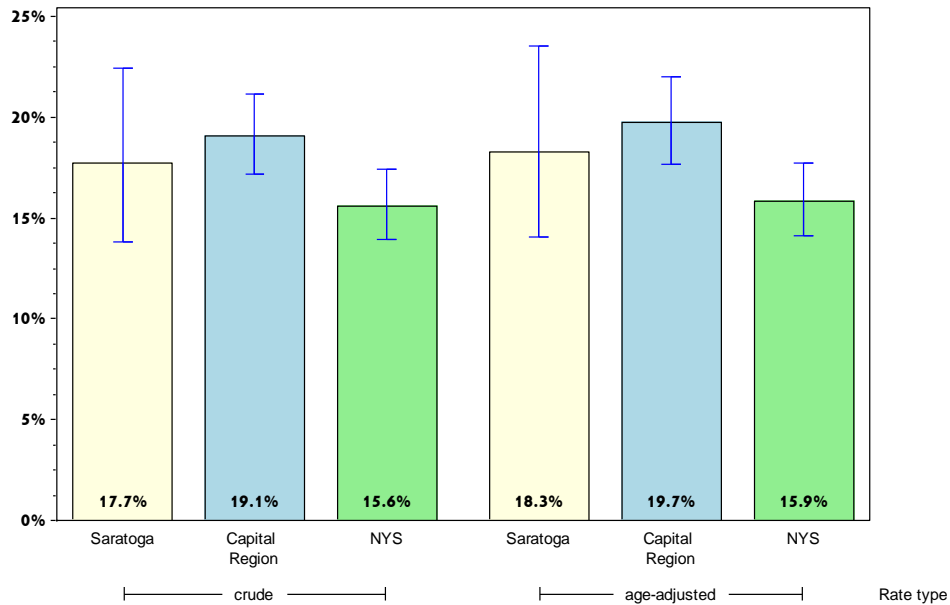
Rates with <10 in the numerator or <50 in the denominator are suppressed.

[^] Highly variable rate (confidence interval with a half-width greater than 10).

Saratoga

Prevent Chronic Diseases

Percentage of adults who are current smokers



	Saratoga County			Capital Region		
	Est. # of Adults	Percent	95% CI	Est. # of Adults	Percent	95% CI
Total	30,141	17.7	(13.8-22.4)	141,063	19.1	(17.2-21.2)
Age		#				
18-24		#		18,990	20.7	(14.6-28.6)
25-34	6,182	25.2 [^]	(15.7-37.9)	31,739	26.0	(20.4-32.5)
35-44	5,100	17.2 [^]	(8.1-33.0)	24,107	21.5	(16.4-27.8)
45-64	12,608	20.0	(14.5-27.0)	55,144	21.2	(18.3-24.4)
65+	1,733	5.3	(2.4-11.4)	10,388	7.4	(5.4-10.0)
Race						
White, NH	26,850	16.8	(13.1-21.3)	117,876	18.7	(16.7-20.9)
Black, NH		#		7,493	21.5	(14.8-30.2)
Hispanic		#		8,467	34.6 [^]	(24.9-45.8)
Other, NH		#		7,227	14.7 [^]	(8.0-25.4)
Sex						
male	13,991	16.9	(12.1-23.2)	75,766	21.1	(18.2-24.4)
female	16,151	18.4	(12.8-25.8)	65,298	17.2	(14.8-19.8)
Age-adjusted^{&}		18.3	(14.0-23.5)		19.7	(17.7-22.0)

& Percent is age-adjusted to the 2000 United States Population.

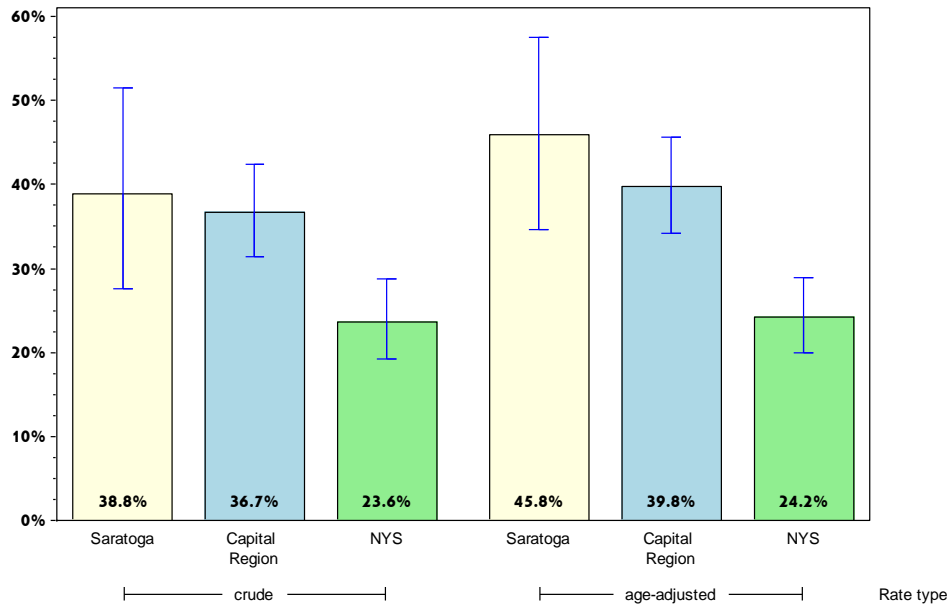
Rates with <10 in the numerator or <50 in the denominator are suppressed.

[^] Highly variable rate (confidence interval with a half-width greater than 10).

Saratoga

Prevent Chronic Diseases

Percentage of adults with annual household income less than \$25,000 who are current smokers



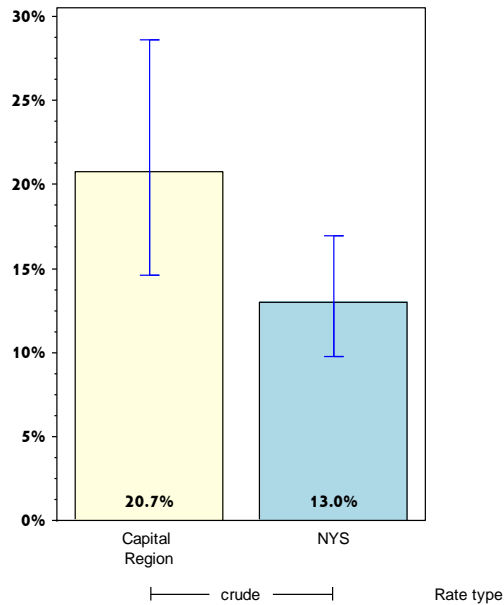
	Saratoga County			Capital Region		
	Est. # of Adults	Percent	95% CI	Est. # of Adults	Percent	95% CI
Total	10,820	38.8 [^]	(27.5-51.5)	56,135	36.7	(31.4-42.3)
Age		#				
18-24		#		5,940	34.3 [^]	(21.7-49.4)
25-34		#		14,236	52.5 [^]	(38.9-65.8)
35-44		#		10,218	51.2 [^]	(35.3-66.7)
45-64	3,337	41.6 [^]	(25.7-59.5)	20,764	41.1 [^]	(31.8-51.1)
65+	720	8.5	(4.2-16.5)	4,979	13.3	(8.1-21.0)
Race						
White, NH	8,653	35.0 [^]	(25.5-45.9)	43,833	37.2	(31.3-43.6)
Black, NH		#		3,373	25.7 [^]	(14.8-40.8)
Hispanic		#		4,581	47.6 [^]	(31.2-64.5)
Other, NH		#			#	
Sex						
male	5,283	43.8 [^]	(27.7-61.3)	30,330	46.8	(38.0-55.7)
female	5,537	35.1 [^]	(20.1-53.7)	25,806	29.3	(23.5-35.9)
Age-adjusted^{&}		45.8 [^]	(34.7-57.5)		39.8	(34.2-45.6)

& Percent is age-adjusted to the 2000 United States Population.
 # Rates with <10 in the numerator or <50 in the denominator are suppressed.
 ^ Highly variable rate (confidence interval with a half-width greater than 10).

Saratoga

Prevent Chronic Diseases

Percentage of adults aged 18-24 years who are current smokers



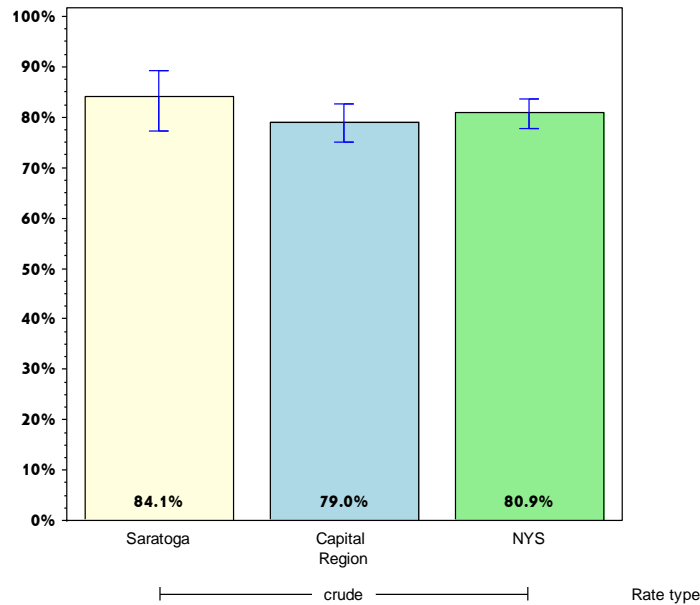
	Saratoga County			Capital Region		
	Est. # of Adults	Percent	95% CI	Est. # of Adults	Percent	95% CI
Total		#		18,990	20.7	(14.6-28.6)
Age⁺						
18-24						
25-34						
35-44						
45-64						
65+						
Race						
White, NH		#		16,226	22.0	(14.9-31.2)
Black, NH		#			#	
Hispanic		#			#	
Other, NH		#			#	
Sex						
male		#		9,187	17.5	(10.9-27.0)
female		#		9,803	25.0 [^]	(14.9-38.8)
Age-adjusted^{+,&}						

& Percent is age-adjusted to the 2000 United States Population.
 + Age-adjusted and age specific percent not generated for health indicators with age range limits.
 # Rates with <10 in the numerator or <50 in the denominator are suppressed.
 ^ Highly variable rate (confidence interval with a half-width greater than 10).

Saratoga

Prevent Chronic Diseases

Percentage of women aged 50-74 years receiving breast cancer screening based on recent guidelines*



Saratoga County

Capital Region

	Est. # of Adults	Percent	95% CI	Est. # of Adults	Percent	95% CI
Total	25,893	84.1	(77.2-89.1)	110,971	79.0	(75.0-82.5)
Age⁺						
18-24						
25-34						
35-44						
45-64						
65+						
Race						
White, NH	25,026	84.2	(77.1-89.4)	100,353	78.7	(74.5-82.4)
Black, NH		#			#	
Hispanic		#			#	
Other, NH		#			#	
Sex						
male		#			#	
female	25,893	84.1	(77.2-89.1)	110,971	79.0	(75.0-82.5)
Age-adjusted^{+,&}						

* Mammogram within past 2 years.

& Percent is age-adjusted to the 2000 United States Population.

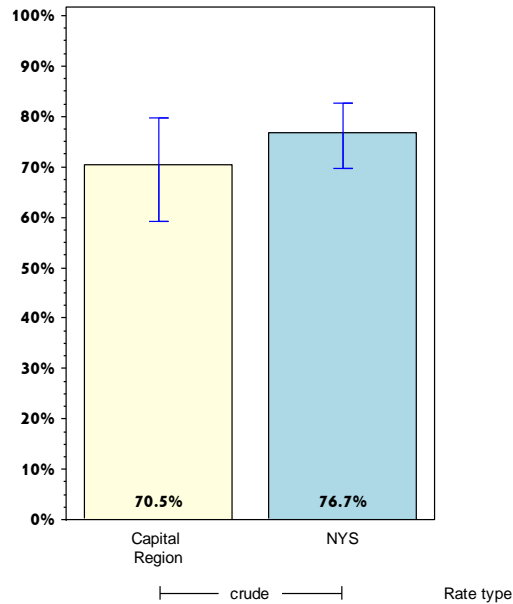
+ Age-adjusted and age specific percent not generated for health indicators with age range limits.

Rates with <10 in the numerator or <50 in the denominator are suppressed.

Saratoga

Prevent Chronic Diseases

Percentage of women aged 50-74 years with annual household income of less than \$25,000 receiving breast cancer screening based on recent guidelines*



	Saratoga County			Capital Region		
	Est. # of Adults	Percent	95% CI	Est. # of Adults	Percent	95% CI
Total		#		21,656	70.5 [^]	(59.2-79.7)
Age⁺						
18-24						
25-34						
35-44						
45-64						
65+						
Race						
White, NH		#		16,285	66.3 [^]	(53.7-76.9)
Black, NH		#			#	
Hispanic		#			#	
Other, NH		#			#	
Sex						
male		#			#	
female		#		21,656	70.5 [^]	(59.2-79.7)
Age-adjusted^{+,&}						

* Mammogram within past 2 years.

& Percent is age-adjusted to the 2000 United States Population.

+ Age-adjusted and age specific percent not generated for health indicators with age range limits.

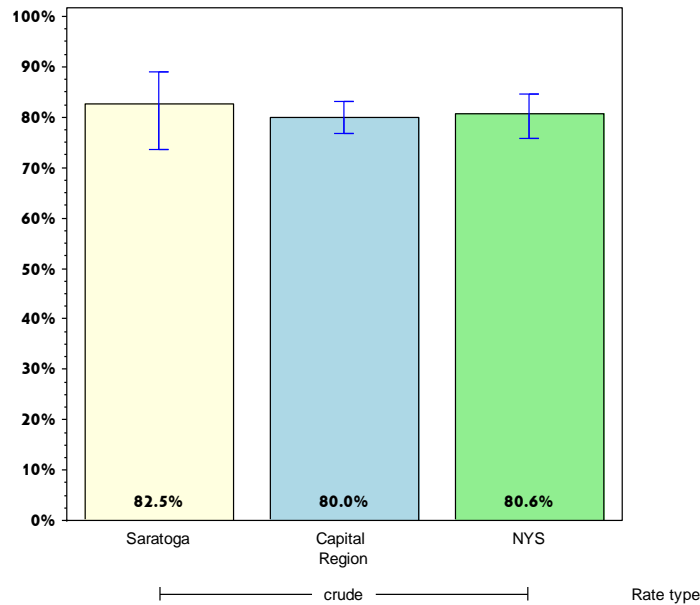
Rates with <10 in the numerator or <50 in the denominator are suppressed.

[^] Highly variable rate (confidence interval with a half-width greater than 10).

Saratoga

Prevent Chronic Diseases

Percentage of women aged 21-65 years receiving cervical cancer screening based on recent guidelines*



Saratoga County

Capital Region

	Est. # of Adults	Percent	95% CI	Est. # of Adults	Percent	95% CI
Total	50,092	82.5	(73.6-88.9)	218,954	80.0	(76.6-83.0)
Age⁺						
18-24						
25-34						
35-44						
45-64						
65+						
Race						
White, NH	48,109	86.5	(79.3-91.5)	189,224	81.8	(78.5-84.8)
Black, NH		#		10,116	74.0 [^]	(54.2-87.3)
Hispanic		#		6,537	74.3 [^]	(52.7-88.2)
Other, NH		#		13,077	65.6 [^]	(44.1-82.1)
Sex						
male		#			#	
female	50,092	82.5	(73.6-88.9)	218,954	80.0	(76.6-83.0)
Age-adjusted^{+,&}						

* Pap test within past 3 years.

& Percent is age-adjusted to the 2000 United States Population.

+ Age-adjusted and age specific percent not generated for health indicators with age range limits.

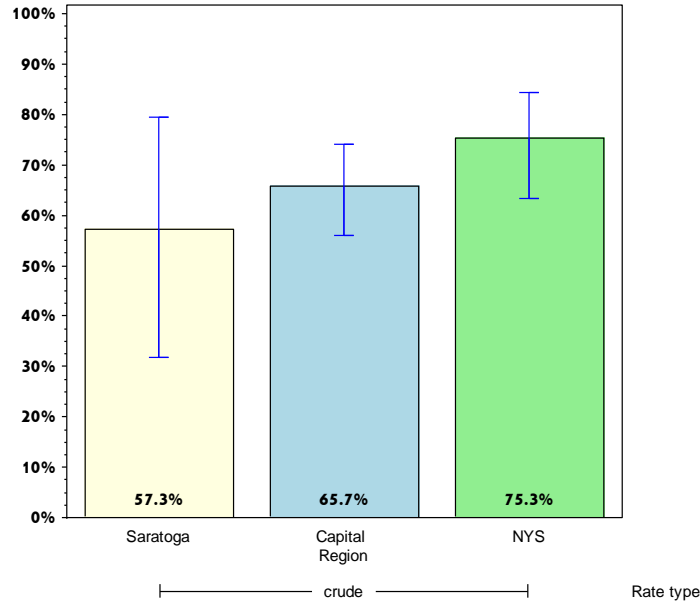
Rates with <10 in the numerator or <50 in the denominator are suppressed.

[^] Highly variable rate (confidence interval with a half-width greater than 10).

Saratoga

Prevent Chronic Diseases

Percentage of women aged 21-65 years with annual household income of less than \$25,000 receiving cervical cancer screening based on recent guidelines*



Saratoga County

Capital Region

	Est. # of Adults	Percent	95% CI	Est. # of Adults	Percent	95% CI
Total Age⁺	5,327	57.3 [^]	(31.9-79.3)	38,085	65.7	(56.0-74.2)
18-24						
25-34						
35-44						
45-64						
65+						
Race						
White, NH	5,220	77.1 [^]	(59.2-88.6)	29,878	69.6	(59.7-77.9)
Black, NH		#			#	
Hispanic		#			#	
Other, NH		#			#	
Sex						
male		#			#	
female	5,327	57.3 [^]	(31.9-79.3)	38,085	65.7	(56.0-74.2)

Age-adjusted^{+,&}

* Pap test within past 3 years.

& Percent is age-adjusted to the 2000 United States Population.

+ Age-adjusted and age specific percent not generated for health indicators with age range limits.

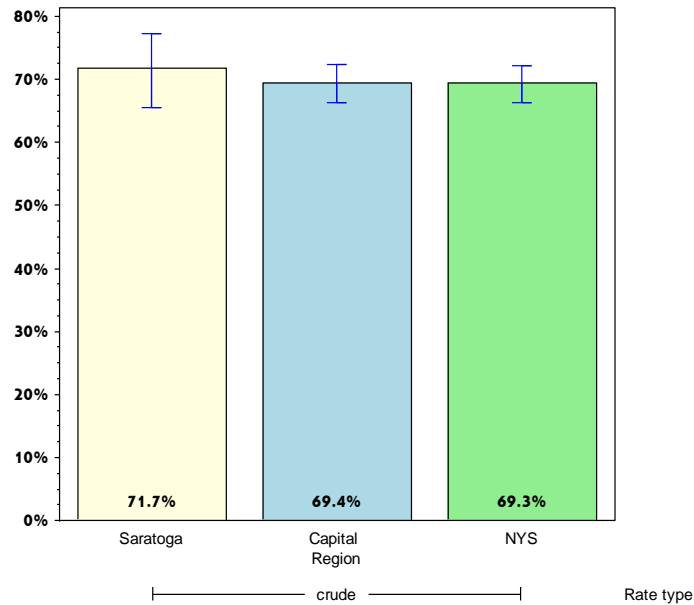
Rates with <10 in the numerator or <50 in the denominator are suppressed.

[^] Highly variable rate (confidence interval with a half-width greater than 10).

Saratoga

Prevent Chronic Diseases

Percentage of adults aged 50-75 years receiving colorectal cancer screening based on recent guidelines*



	Saratoga County			Capital Region		
	Est. # of Adults	Percent	95% CI	Est. # of Adults	Percent	95% CI
Total	47,233	71.7	(65.5-77.1)	187,405	69.4	(66.3-72.4)
Age⁺						
18-24						
25-34						
35-44						
45-64						
65+						
Race						
White, NH	45,135	71.6	(65.1-77.2)	167,485	70.0	(66.9-73.0)
Black, NH		#		5,819	57.4 [^]	(37.3-75.2)
Hispanic		#			#	
Other, NH		#		10,135	69.0 [^]	(45.3-85.6)
Sex						
male	23,171	66.3	(56.6-74.9)	86,398	67.2	(62.2-71.9)
female	24,061	77.7	(70.8-83.3)	101,007	71.5	(67.5-75.1)
Age-adjusted^{+,&}						

* Blood stool test within 1 year, or sigmoidoscopy within 5 years with blood stool test within 3 years, or colonoscopy within 10 years.

& Percent is age-adjusted to the 2000 United States Population.

+ Age-adjusted and age specific percent not generated for health indicators with age range limits.

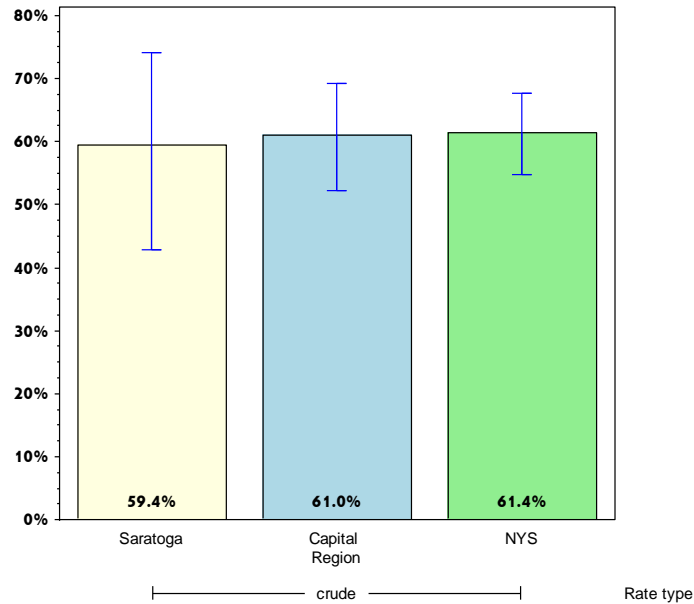
Rates with <10 in the numerator or <50 in the denominator are suppressed.

[^] Highly variable rate (confidence interval with a half-width greater than 10).

Saratoga

Prevent Chronic Diseases

Percentage of adults aged 50-75 years with annual household income less than \$25,000 receiving colorectal cancer screening based on recent guidelines*



	Saratoga County			Capital Region		
	Est. # of Adults	Percent	95% CI	Est. # of Adults	Percent	95% CI
Total	5,970	59.4 [^]	(42.8-74.1)	33,685	61.0	(52.1-69.2)
Age⁺						
18-24						
25-34						
35-44						
45-64						
65+						
Race						
White, NH	5,757	58.7 [^]	(41.8-73.7)	26,261	62.3	(53.5-70.3)
Black, NH		#			#	
Hispanic		#			#	
Other, NH		#			#	
Sex						
male		#		11,885	49.3 [^]	(35.9-62.9)
female		#		21,800	70.0	(60.2-78.3)
Age-adjusted^{+,&}						

* Blood stool test within 1 year, or sigmoidoscopy within 5 years with blood stool test within 3 years, or colonoscopy within 10 years.

& Percent is age-adjusted to the 2000 United States Population.

+ Age-adjusted and age specific percent not generated for health indicators with age range limits.

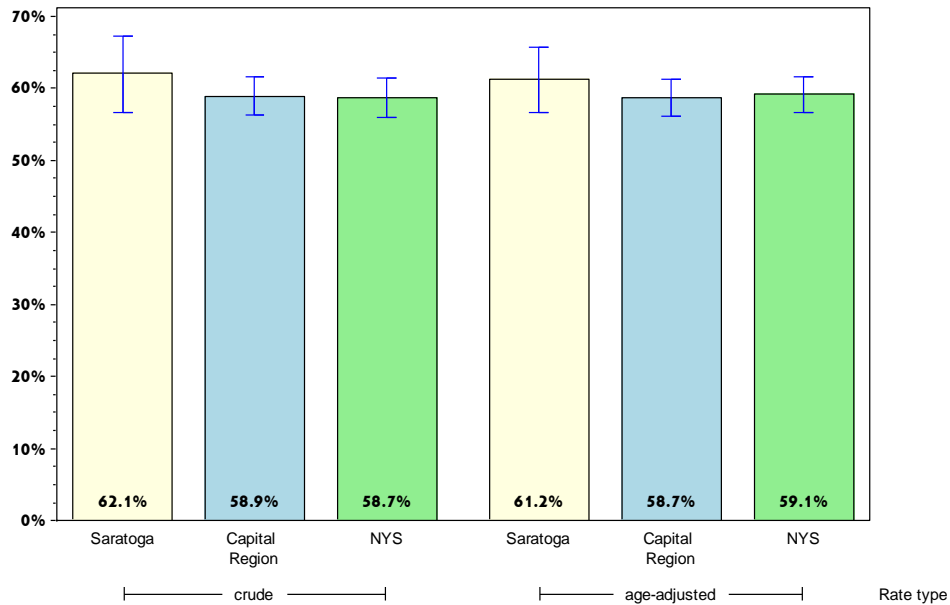
Rates with <10 in the numerator or <50 in the denominator are suppressed.

[^] Highly variable rate (confidence interval with a half-width greater than 10).

Saratoga

Prevent Chronic Diseases

Percentage of adults who had a test for high blood sugar or diabetes within the past three years



	Saratoga County			Capital Region		
	Est. # of Adults	Percent	95% CI	Est. # of Adults	Percent	95% CI
Total	93,424	62.1	(56.7-67.2)	387,390	58.9	(56.3-61.5)
Age		#				
18-24		#		27,483	30.4 [^]	(21.5-41.0)
25-34	14,035	58.2 [^]	(44.7-70.6)	62,651	51.6	(45.0-58.1)
35-44	17,810	65.9 [^]	(54.3-75.8)	60,615	58.6	(51.9-65.0)
45-64	39,532	70.4	(63.0-76.9)	154,280	69.2	(65.5-72.7)
65+	17,587	73.4	(64.5-80.8)	74,984	69.3	(65.0-73.3)
Race						
White, NH	87,416	61.9	(56.3-67.2)	336,654	60.0	(57.3-62.7)
Black, NH		#		18,952	60.5 [^]	(46.6-73.0)
Hispanic		#		11,998	53.0 [^]	(41.9-63.8)
Other, NH		#		19,787	46.7 [^]	(32.5-61.4)
Sex						
male	43,472	61.5	(54.2-68.3)	181,844	57.7	(53.8-61.6)
female	49,952	62.7	(54.7-70.1)	205,546	60.0	(56.5-63.5)
Age-adjusted^{&}		61.2	(56.6-65.6)		58.7	(56.1-61.3)

& Percent is age-adjusted to the 2000 United States Population.

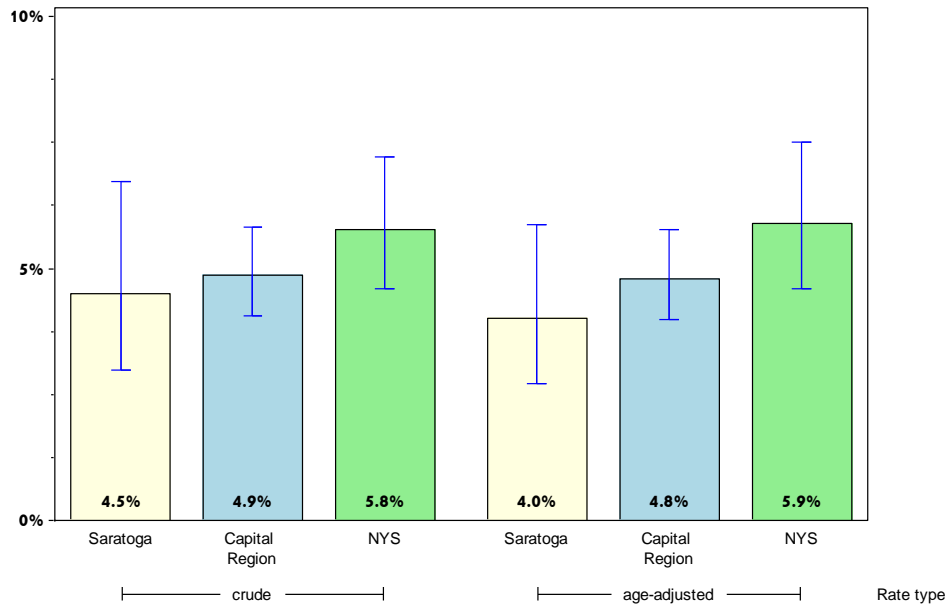
Rates with <10 in the numerator or <50 in the denominator are suppressed.

[^] Highly variable rate (confidence interval with a half-width greater than 10).

Saratoga

Prevent Chronic Diseases

Percentage of adults with physician-diagnosed prediabetes



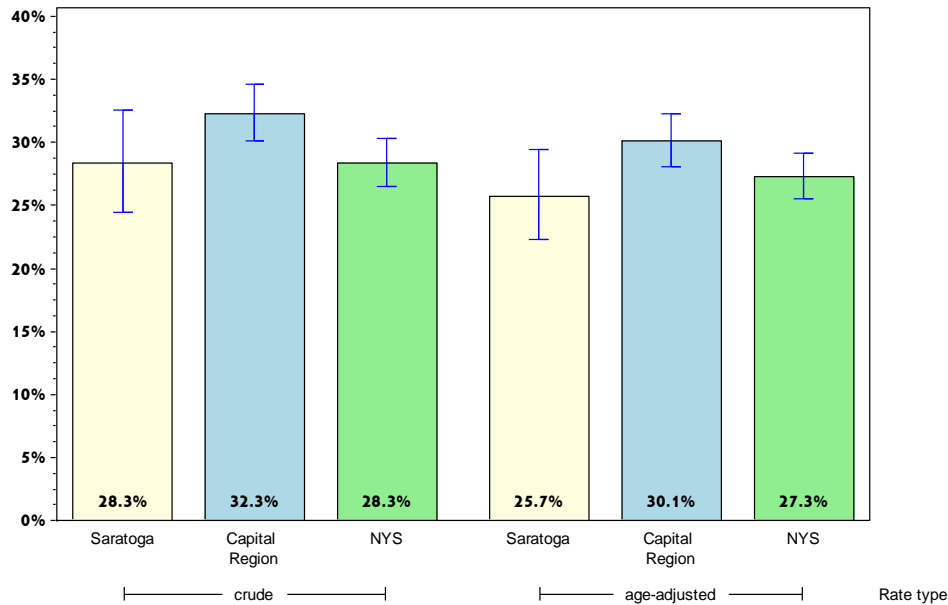
	Saratoga County			Capital Region		
	Est. # of Adults	Percent	95% CI	Est. # of Adults	Percent	95% CI
Total	7,071	4.5	(3.0-6.7)	33,014	4.9	(4.0-5.8)
Age		#			#	
18-24		#			#	
25-34		#		3,641	2.9	(1.7-5.1)
35-44		#		3,857	3.6	(2.0-6.4)
45-64	4,768	8.0	(4.7-13.4)	13,796	5.9	(4.5-7.8)
65+	1,386	5.6	(2.8-10.9)	10,296	9.3	(6.9-12.4)
Race						
White, NH	6,962	4.7	(3.1-7.1)	26,899	4.6	(3.8-5.6)
Black, NH		#		2,420	7.6	(3.6-15.2)
Hispanic		#			#	
Other, NH		#			#	
Sex						
male	4,049	5.5	(3.1-9.5)	16,246	5.0	(3.9-6.5)
female	3,023	3.6	(2.0-6.4)	16,768	4.7	(3.7-6.0)
Age-adjusted^{&}		4.0	(2.7-5.9)		4.8	(4.0-5.8)

& Percent is age-adjusted to the 2000 United States Population.
 # Rates with <10 in the numerator or <50 in the denominator are suppressed.

Saratoga

Prevent Chronic Diseases

Percentage of adults with physician-diagnosed high blood pressure



Saratoga County

Capital Region

	Est. # of Adults	Percent	95% CI	Est. # of Adults	Percent	95% CI
Total	49,150	28.3	(24.4-32.6)	243,986	32.3	(30.1-34.6)
Age		#				
18-24		#		4,516	4.8	(1.7-12.9)
25-34		#		17,383	13.8	(9.4-19.9)
35-44	4,831	16.0 [^]	(9.1-26.4)	26,620	23.1	(18.0-29.1)
45-64	22,983	35.7	(29.0-43.0)	100,694	38.3	(34.7-42.1)
65+	17,880	54.5	(46.4-62.4)	88,328	61.4	(57.5-65.1)
Race						
White, NH	47,260	29.0	(24.9-33.5)	209,708	32.6	(30.4-35.0)
Black, NH		#		16,696	44.7 [^]	(33.4-56.6)
Hispanic		#		5,472	21.3	(14.7-30.0)
Other, NH		#		12,111	24.3 [^]	(13.7-39.3)
Sex						
male	30,617	36.1	(29.9-42.9)	133,745	36.5	(33.0-40.1)
female	18,533	20.9	(16.8-25.7)	110,242	28.4	(25.7-31.2)
Age-adjusted^{&}		25.7	(22.3-29.4)		30.1	(28.0-32.3)

& Percent is age-adjusted to the 2000 United States Population.

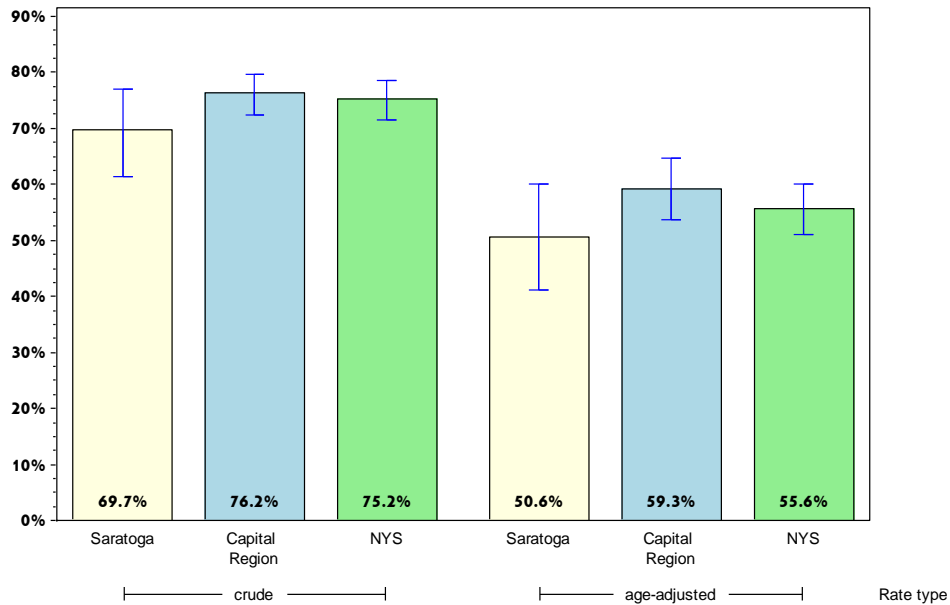
Rates with <10 in the numerator or <50 in the denominator are suppressed.

[^] Highly variable rate (confidence interval with a half-width greater than 10).

Saratoga

Prevent Chronic Diseases

Percentage of adults with diagnosed high blood pressure taking high blood pressure medication



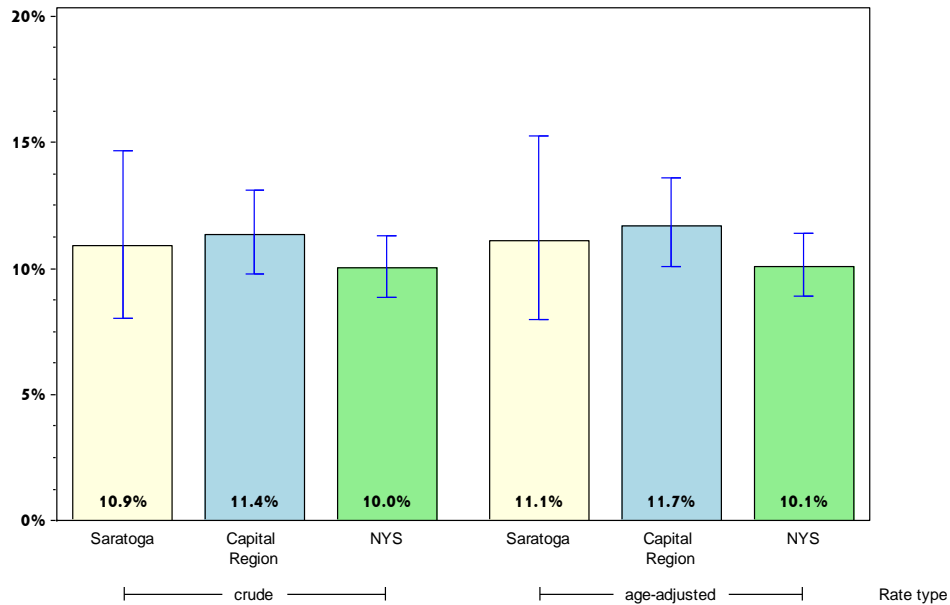
	Saratoga County			Capital Region		
	Est. # of Adults	Percent	95% CI	Est. # of Adults	Percent	95% CI
Total	34,262	69.7	(61.3-77.0)	184,933	76.2	(72.5-79.6)
Age		#			#	
18-24		#			#	
25-34		#		6,283	36.1 [^]	(17.2-60.7)
35-44		#		16,792	63.1 [^]	(49.8-74.6)
45-64	15,212	66.2 [^]	(52.5-77.6)	76,505	76.4	(70.5-81.4)
65+	15,724	87.9 [^]	(76.9-94.1)	79,451	90.6	(87.3-93.1)
Race						
White, NH	32,943	69.7	(61.0-77.2)	158,180	75.9	(72.1-79.4)
Black, NH		#		12,368	74.1 [^]	(47.5-90.0)
Hispanic		#			#	
Other, NH		#			#	
Sex						
male	20,484	66.9 [^]	(55.1-76.9)	99,560	75.2	(69.6-80.1)
female	13,778	74.3 [^]	(62.8-83.3)	85,373	77.5	(72.4-81.9)
Age-adjusted^{&}		50.6	(41.1-60.2)		59.3	(53.7-64.6)

& Percent is age-adjusted to the 2000 United States Population.
 # Rates with <10 in the numerator or <50 in the denominator are suppressed.
 ^ Highly variable rate (confidence interval with a half-width greater than 10).

Saratoga

Prevent Chronic Diseases

Percentage of adults with current asthma*



	Saratoga County			Capital Region		
	Est. # of Adults	Percent	95% CI	Est. # of Adults	Percent	95% CI
Total	18,900	10.9	(8.0-14.7)	85,825	11.4	(9.8-13.1)
Age		#				
18-24		#		8,015	8.5	(5.1-13.6)
25-34	4,561	18.4 [^]	(8.7-34.8)	21,480	17.1	(11.8-24.3)
35-44	3,613	11.9 [^]	(5.0-25.8)	14,809	12.8	(9.2-17.6)
45-64	7,302	11.3	(7.3-17.1)	29,947	11.4	(9.1-14.2)
65+	2,368	7.2	(4.6-11.3)	10,717	7.4	(5.9-9.4)
Race						
White, NH	17,727	10.9	(7.9-14.8)	72,459	11.3	(9.6-13.2)
Black, NH		#		5,334	14.5 [^]	(7.6-25.7)
Hispanic		#		3,520	13.8	(8.0-22.9)
Other, NH		#		4,512	9.0 [^]	(4.0-19.1)
Sex						
male	8,092	9.5	(5.7-15.5)	34,052	9.3	(7.2-11.9)
female	10,807	12.2	(8.3-17.6)	51,772	13.3	(11.2-15.8)
Age-adjusted^{&}		11.1	(8.0-15.2)		11.7	(10.1-13.6)

* Physician diagnosed asthma.

& Percent is age-adjusted to the 2000 United States Population.

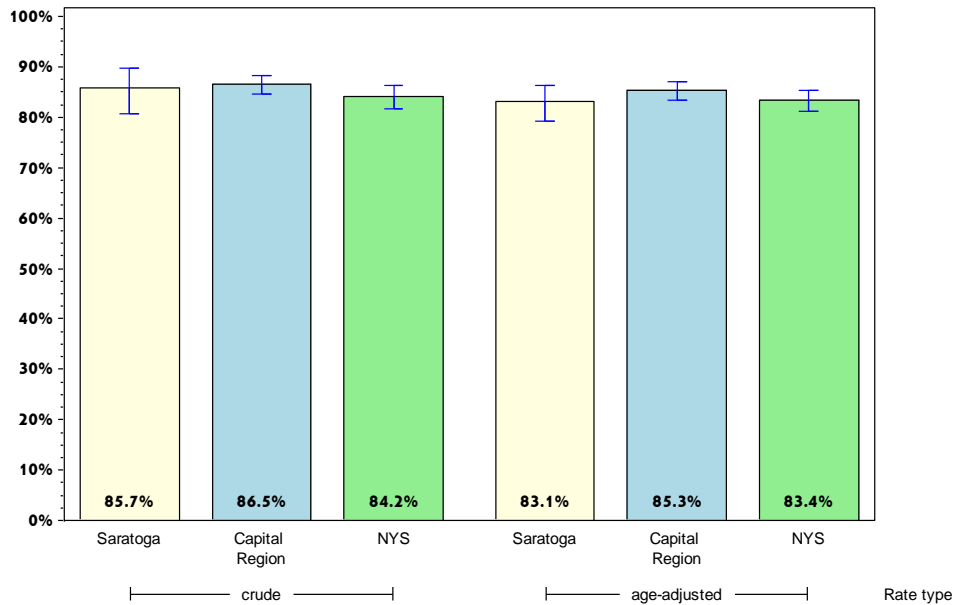
Rates with <10 in the numerator or <50 in the denominator are suppressed.

[^] Highly variable rate (confidence interval with a half-width greater than 10).

Saratoga

Prevent Chronic Diseases

Percent of adults with cholesterol checked*



Saratoga County

Capital Region

	Est. # of Adults	Percent	95% CI	Est. # of Adults	Percent	95% CI
Total	146,504	85.7	(80.6-89.7)	639,140	86.5	(84.7-88.2)
Age						
18-24		#		44,907	50.1 [^]	(39.8-60.5)
25-34	17,919	74.1 [^]	(61.7-83.5)	89,079	74.8	(69.7-79.3)
35-44	27,006	91.1	(83.1-95.5)	100,962	90.2	(86.2-93.1)
45-64	62,729	98.5	(96.6-99.3)	252,435	96.6	(94.9-97.8)
65+	31,033	95.3	(88.7-98.1)	139,365	96.8	(95.2-97.9)
Race						
White, NH	138,024	85.8	(80.4-89.9)	550,269	87.4	(85.4-89.1)
Black, NH		#		30,769	84.0	(74.9-90.3)
Hispanic		#		18,164	74.0	(64.3-81.8)
Other, NH		#		39,939	83.5 [^]	(73.4-90.3)
Sex						
male	72,232	87.3	(82.3-91.0)	304,962	85.4	(82.7-87.7)
female	74,272	84.2	(75.0-90.5)	334,177	87.6	(84.9-89.8)
Age-adjusted^{&}		83.1	(79.3-86.3)		85.3	(83.3-87.0)

* As diagnosed by a health professional.

& Percent is age-adjusted to the 2000 United States Population.

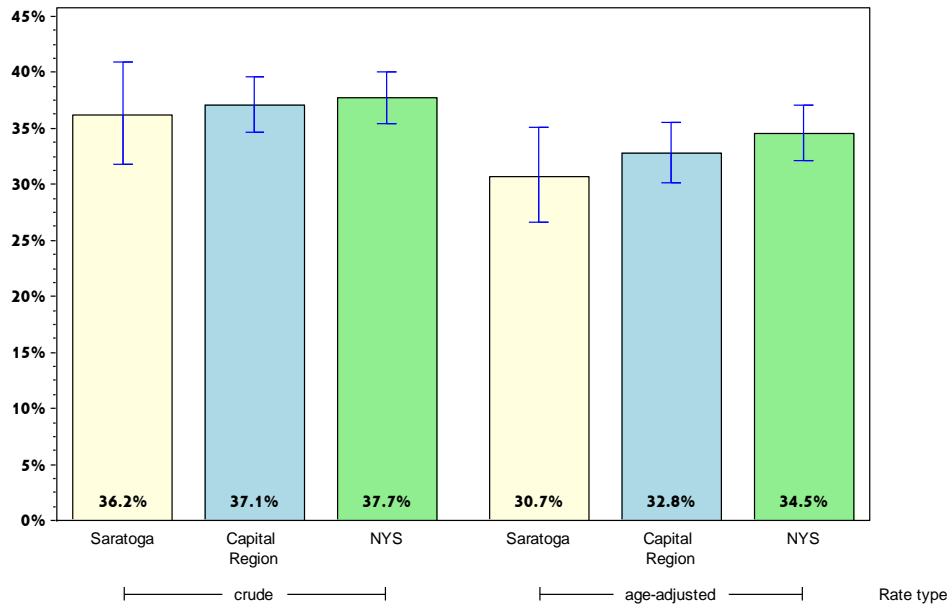
Rates with <10 in the numerator or <50 in the denominator are suppressed.

[^] Highly variable rate (confidence interval with a half-width greater than 10).

Saratoga

Prevent Chronic Diseases

Percentage of adults 18 years and older with elevated cholesterol*



	Saratoga County			Capital Region		
	Est. # of Adults	Percent	95% CI	Est. # of Adults	Percent	95% CI
Total	52,680	36.2	(31.8-41.0)	235,112	37.1	(34.6-39.6)
Age						
18-24		#		5,953	13.3 [^]	(4.8-31.8)
25-34	2,121	11.8 [^]	(5.9-22.4)	16,241	18.2	(12.4-26.0)
35-44	7,055	26.3 [^]	(15.9-40.4)	24,632	24.4	(19.4-30.3)
45-64	23,983	38.3	(31.7-45.5)	109,820	43.9	(40.1-47.7)
65+	18,128	59.4	(50.9-67.3)	74,721	54.5	(50.5-58.4)
Race						
White, NH	50,107	36.6	(32.0-41.4)	203,433	37.3	(34.8-39.8)
Black, NH		#		10,346	33.6 [^]	(23.0-46.2)
Hispanic		#		7,318	40.6 [^]	(29.2-53.1)
Other, NH		#		14,016	35.1 [^]	(21.2-52.1)
Sex						
male	27,438	38.3	(31.4-45.7)	113,334	37.5	(33.8-41.5)
female	25,242	34.3	(28.7-40.2)	121,779	36.6	(33.5-39.9)
Age-adjusted^{&}		30.7	(26.7-35.1)		32.8	(30.1-35.6)

* As diagnosed by a health professional.

& Percent is age-adjusted to the 2000 United States Population.

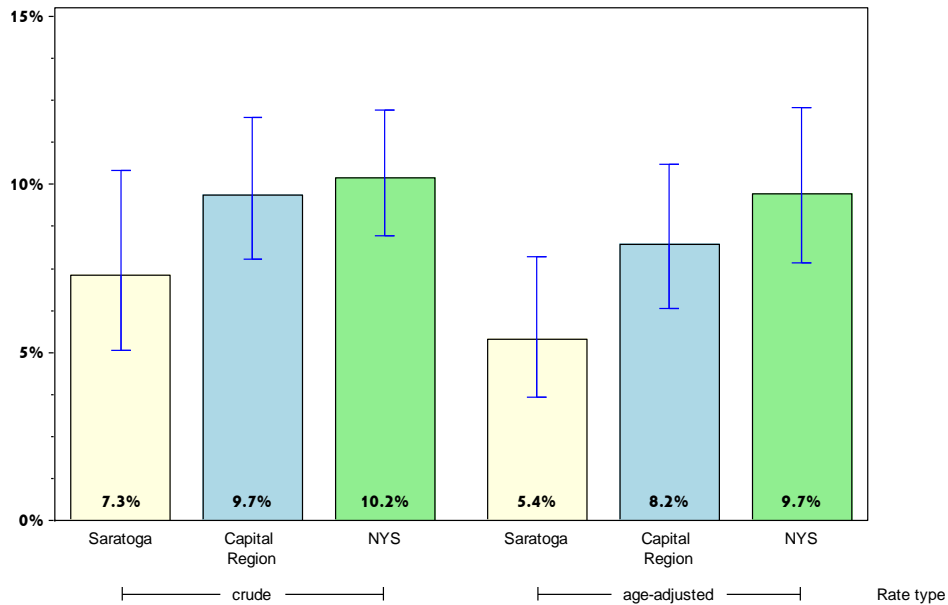
Rates with <10 in the numerator or <50 in the denominator are suppressed.

[^] Highly variable rate (confidence interval with a half-width greater than 10).

Saratoga

Prevent Chronic Diseases

Percentage of adults who have taken a course or class to learn how to manage their chronic disease or condition*



Saratoga County

Capital Region

	Est. # of Adults	Percent	95% CI	Est. # of Adults	Percent	95% CI
Total	6,571	7.3	(5.1-10.4)	38,954	9.7	(7.8-12.0)
Age		#			#	
18-24		#			#	
25-34		#			#	
35-44		#		2,378	4.4	(2.3-8.5)
45-64	3,536	9.7	(5.7-16.0)	16,610	10.3	(7.5-14.0)
65+	2,362	9.1	(5.3-15.3)	12,432	11.0	(8.6-13.9)
Race						
White, NH	6,248	7.5	(5.2-10.7)	32,271	9.3	(7.5-11.6)
Black, NH		#		2,454	11.4	(6.3-20.0)
Hispanic		#			#	
Other, NH		#			#	
Sex						
male	4,162	9.3	(5.6-15.0)	17,247	9.1	(7.0-11.7)
female	2,409	5.3	(3.2-8.7)	21,707	10.2	(7.3-14.1)
Age-adjusted^{&}		5.4	(3.7-7.9)		8.2	(6.3-10.6)

* Courses for high blood pressure, arthritis, or diabetes.

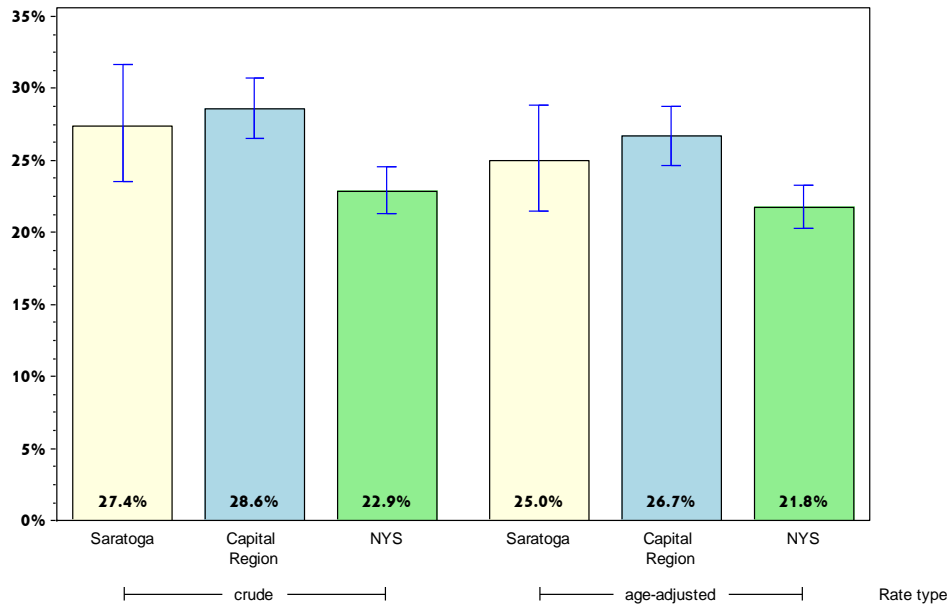
& Percent is age-adjusted to the 2000 United States Population.

Rates with <10 in the numerator or <50 in the denominator are suppressed.

Saratoga

Prevent Chronic Diseases

Percentage of adults with arthritis*



Saratoga County

Capital Region

	Est. # of Adults	Percent	95% CI	Est. # of Adults	Percent	95% CI
Total	47,568	27.4	(23.5-31.7)	215,186	28.6	(26.5-30.7)
Age						
18-24	#			5,786	6.1	(2.9-12.1)
25-34	#			9,822	8.0	(5.3-11.9)
35-44	6,235	20.6 [^]	(11.2-34.7)	22,489	19.5	(14.0-26.6)
45-64	20,988	32.6	(26.4-39.6)	96,695	36.8	(33.2-40.4)
65+	18,148	55.3	(47.3-63.1)	77,396	53.7	(49.8-57.5)
Race						
White, NH	43,747	26.8	(23.1-31.0)	186,495	29.1	(27.0-31.3)
Black, NH	#			8,607	23.1	(15.9-32.2)
Hispanic	#			5,766	22.5	(15.2-32.0)
Other, NH	#			14,318	28.7 [^]	(16.8-44.4)
Sex						
male	18,538	21.9	(17.1-27.6)	76,893	21.1	(18.7-23.8)
female	29,030	32.6	(26.7-39.1)	138,293	35.5	(32.5-38.6)
Age-adjusted^{&}		25.0	(21.5-28.9)		26.7	(24.7-28.8)

* Includes rheumatoid arthritis, gout, lupus, or fibromyalgia.

& Percent is age-adjusted to the 2000 United States Population.

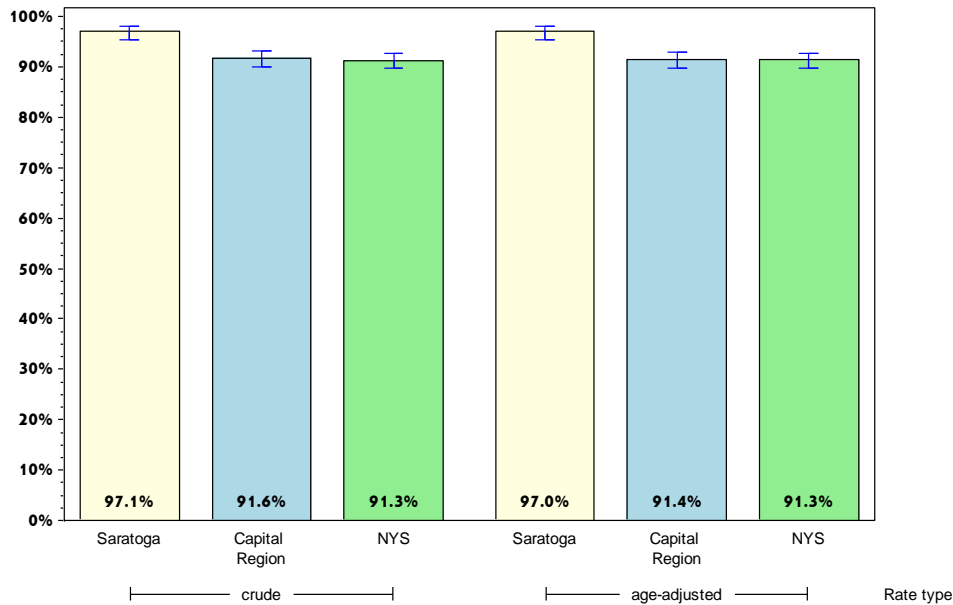
Rates with <10 in the numerator or <50 in the denominator are suppressed.

[^] Highly variable rate (confidence interval with a half-width greater than 10).

Saratoga

Promote a Healthy and Safe Environment

Percentage of adults who consider their neighborhood suitable for walking and physical activity



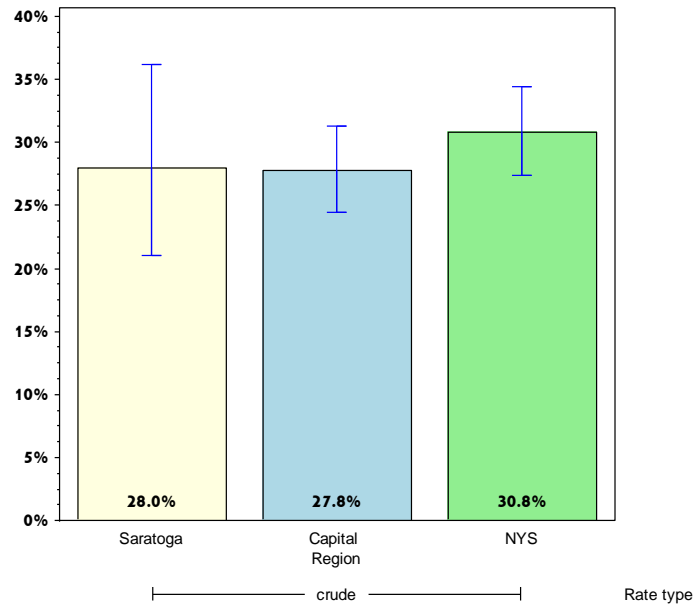
	Saratoga County			Capital Region		
	Est. # of Adults	Percent	95% CI	Est. # of Adults	Percent	95% CI
Total	159,722	97.1	(95.4-98.1)	655,340	91.6	(89.8-93.0)
Age		#				
18-24				77,470	89.2	(79.8-94.5)
25-34	23,202	96.8	(91.0-98.9)	102,214	86.1	(79.6-90.7)
35-44	28,281	96.0	(90.2-98.4)	102,548	93.2	(90.0-95.4)
45-64	57,768	96.7	(92.9-98.5)	234,077	92.8	(90.3-94.7)
65+	30,868	97.7	(95.4-98.9)	128,519	94.2	(92.1-95.7)
Race						
White, NH	149,825	97.0	(95.2-98.1)	565,421	92.4	(90.7-93.8)
Black, NH		#		29,736	87.1	(79.3-92.3)
Hispanic		#		20,397	90.9	(85.2-94.5)
Other, NH		#		39,787	84.2 [^]	(67.8-93.1)
Sex						
male	78,377	98.6	(96.9-99.4)	318,464	92.0	(89.0-94.3)
female	81,345	95.6	(92.7-97.4)	336,877	91.1	(89.1-92.8)
Age-adjusted^{&}		97.0	(95.4-98.1)		91.4	(89.6-92.9)

& Percent is age-adjusted to the 2000 United States Population.
 # Rates with <10 in the numerator or <50 in the denominator are suppressed.
 ^ Highly variable rate (confidence interval with a half-width greater than 10).

Saratoga

Promote a Health and Safe Environment

Percentage of adults aged 65+ years with at least one fall in the past 12 months



Saratoga County

Capital Region

	Est. # of Adults	Percent	95% CI	Est. # of Adults	Percent	95% CI
Total	8,899	28.0	(21.0-36.2)	38,155	27.8	(24.5-31.3)
Age⁺						
18-24						
25-34						
35-44						
45-64						
65+						
Race						
White, NH	8,873	28.6	(21.5-36.9)	36,209	28.6	(25.2-32.3)
Black, NH		#			#	
Hispanic		#			#	
Other, NH		#			#	
Sex						
male	3,622	24.4 [^]	(15.0-37.0)	15,469	25.5	(20.9-30.7)
female	5,278	31.2 [^]	(21.9-42.4)	22,685	29.6	(25.1-34.5)
Age-adjusted^{+,&}						

& Percent is age-adjusted to the 2000 United States Population.

+ Age-adjusted and age specific percent not generated for health indicators with age range limits.

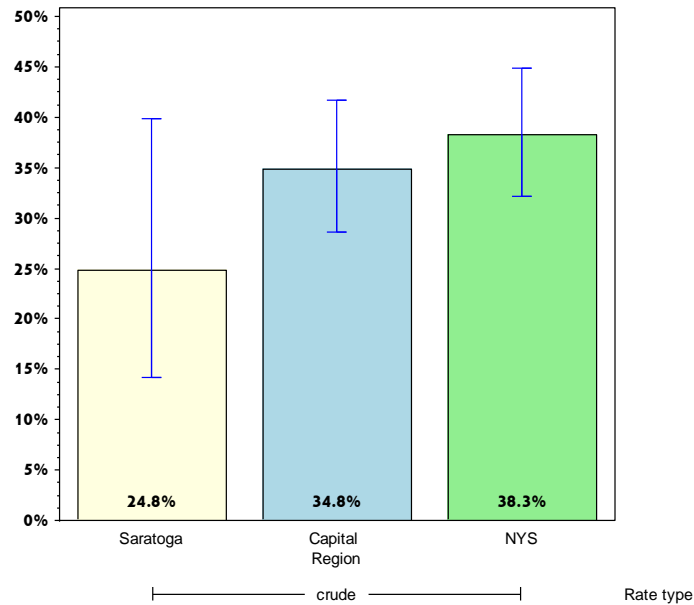
Rates with <10 in the numerator or <50 in the denominator are suppressed.

[^] Highly variable rate (confidence interval with a half-width greater than 10).

Saratoga

Promote a Health and Safe Environment

Among adults aged 65+ years with at least one fall in the past 12 months, percent that resulted in injury*



Saratoga County

Capital Region

	Est. # of Adults	Percent	95% CI	Est. # of Adults	Percent	95% CI
Total	2,211	24.8 [^]	(14.1-39.9)	13,231	34.8	(28.6-41.7)
Age⁺						
18-24						
25-34						
35-44						
45-64						
65+						
Race						
White, NH	2,185	24.6 [^]	(13.9-39.7)	12,411	34.4	(28.1-41.4)
Black, NH		#			#	
Hispanic		#			#	
Other, NH		#			#	
Sex						
male		#		4,370	28.2 [^]	(19.7-38.7)
female		#		8,861	39.4	(30.9-48.5)
Age-adjusted^{+,&}						

* Falls that limited regular activities or lead to doctor visits.

& Percent is age-adjusted to the 2000 United States Population.

+ Age-adjusted and age specific percent not generated for health indicators with age range limits.

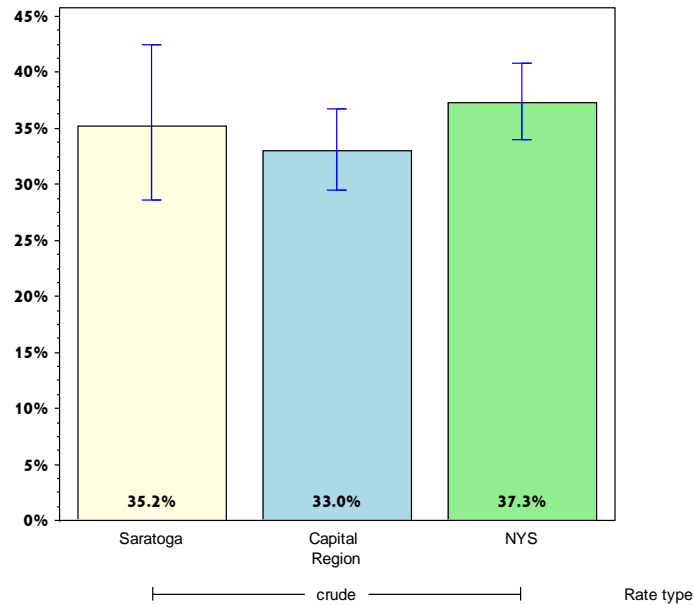
Rates with <10 in the numerator or <50 in the denominator are suppressed.

[^] Highly variable rate (confidence interval with a half-width greater than 10).

Saratoga

Prevent HIV/STDs, Vaccine Preventable Diseases and Healthcare-Associated Infections

Percentage of adults aged 47-68 years reporting ever tested for Hepatitis C (HCV)



Saratoga County

Capital Region

	Est. # of Adults	Percent	95% CI	Est. # of Adults	Percent	95% CI
Total	19,994	35.2	(28.6-42.5)	76,642	33.0	(29.5-36.7)
Age⁺						
18-24						
25-34						
35-44						
45-64						
65+						
Race						
White, NH	19,378	35.5	(28.7-42.9)	67,188	33.0	(29.3-36.9)
Black, NH		#		4,175	45.6 [^]	(27.9-64.4)
Hispanic		#			#	
Other, NH		#			#	
Sex						
male	13,008	40.4 [^]	(30.5-51.0)	42,342	37.1	(31.6-42.9)
female	6,987	28.5	(21.1-37.4)	34,300	29.1	(24.6-34.0)
Age-adjusted^{+,&}						

& Percent is age-adjusted to the 2000 United States Population.

+ Age-adjusted and age specific percent not generated for health indicators with age range limits.

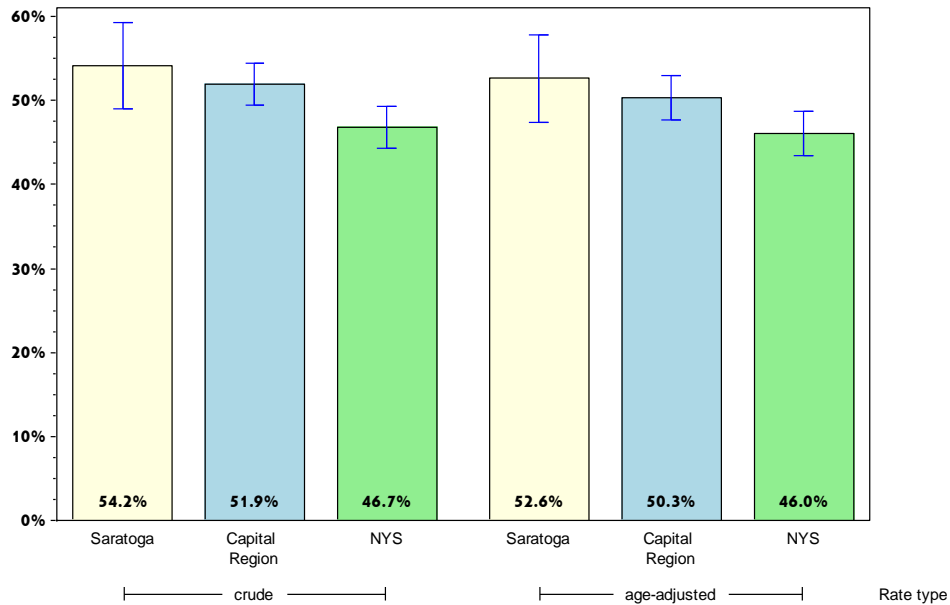
Rates with <10 in the numerator or <50 in the denominator are suppressed.

[^] Highly variable rate (confidence interval with a half-width greater than 10).

Saratoga

Prevent HIV/STDs, Vaccine Preventable Diseases and Healthcare-Associated Infections

Percentage of adults aged 18+ years with flu immunization in the past year*



	Saratoga County			Capital Region		
	Est. # of Adults	Percent	95% CI	Est. # of Adults	Percent	95% CI
Total	90,046	54.2	(49.0-59.2)	374,103	51.9	(49.4-54.4)
Age		#				
18-24				39,893	45.7 [^]	(35.3-56.5)
25-34	11,673	48.7 [^]	(34.7-62.9)	43,833	36.8	(30.7-43.4)
35-44	12,620	42.8 [^]	(31.1-55.4)	47,801	43.1	(36.6-49.8)
45-64	32,545	53.4	(46.1-60.5)	130,568	51.5	(47.7-55.2)
65+	25,481	80.2	(73.1-85.7)	104,721	75.8	(72.3-78.9)
Race						
White, NH	85,856	55.1	(49.8-60.3)	318,858	51.8	(49.2-54.3)
Black, NH		#		14,742	43.2 [^]	(31.3-55.9)
Hispanic		#		10,649	46.5 [^]	(36.6-56.8)
Other, NH		#		29,854	62.7 [^]	(49.2-74.6)
Sex						
male	42,635	53.0	(46.0-59.8)	168,675	48.4	(44.6-52.2)
female	47,412	55.3	(47.6-62.7)	205,428	55.2	(51.9-58.5)
Age-adjusted^{&}		52.6	(47.4-57.8)		50.3	(47.7-53.0)

* Includes flu shot or flu spray

& Percent is age-adjusted to the 2000 United States Population.

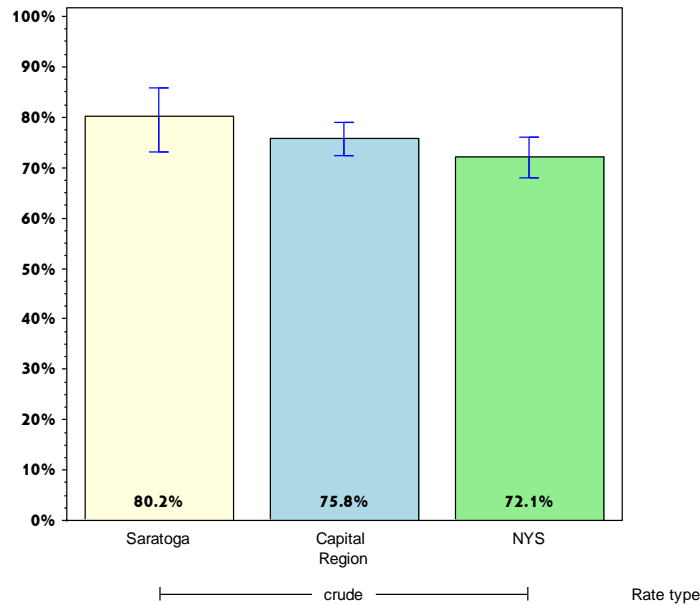
Rates with <10 in the numerator or <50 in the denominator are suppressed.

[^] Highly variable rate (confidence interval with a half-width greater than 10).

Saratoga

Prevent HIV/STDs, Vaccine Preventable Diseases and Healthcare-Associated Infections

Percentage of adults aged 65+ years with flu immunization in the past year*



Saratoga County

Capital Region

	Est. # of Adults	Percent	95% CI	Est. # of Adults	Percent	95% CI
Total Age⁺	25,481	80.2	(73.1-85.7)	104,721	75.8	(72.3-78.9)
18-24						
25-34						
35-44						
45-64						
65+						
Race						
White, NH	24,909	80.2	(73.0-85.9)	96,169	75.6	(72.0-78.8)
Black, NH		#			#	
Hispanic		#			#	
Other, NH		#			#	
Sex						
male	11,561	77.7 [^]	(64.7-86.9)	44,927	73.5	(67.8-78.5)
female	13,920	82.3	(74.8-87.9)	59,794	77.6	(73.3-81.4)
Age-adjusted^{+,&}						

* Includes flu shot or flu spray

& Percent is age-adjusted to the 2000 United States Population.

+ Age-adjusted and age specific percent not generated for health indicators with age range limits.

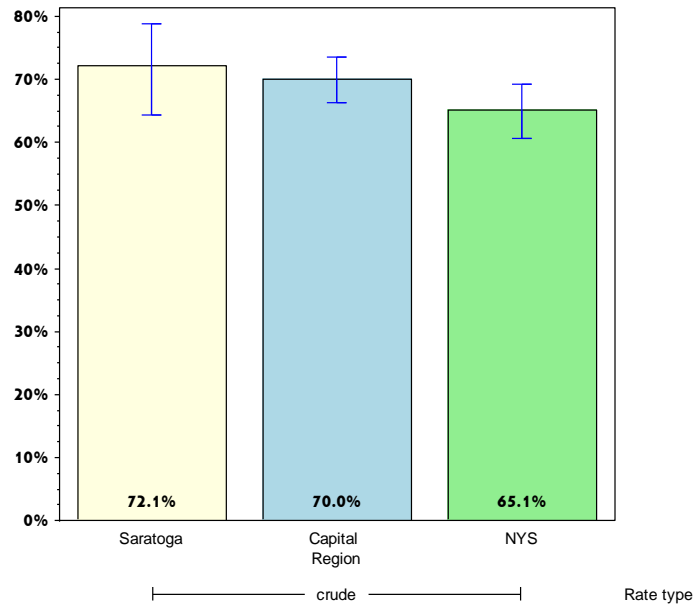
Rates with <10 in the numerator or <50 in the denominator are suppressed.

[^] Highly variable rate (confidence interval with a half-width greater than 10).

Saratoga

Prevent HIV/STDs, Vaccine Preventable Diseases and Healthcare-Associated Infections

Percentage of adults aged 65+ years with pneumococcal immunization



Saratoga County

Capital Region

	Est. # of Adults	Percent	95% CI	Est. # of Adults	Percent	95% CI
Total Age⁺	22,411	72.1	(64.3-78.7)	92,729	70.0	(66.2-73.5)
18-24						
25-34						
35-44						
45-64						
65+						
Race						
White, NH	22,166	73.1	(65.2-79.7)	86,365	71.1	(67.2-74.6)
Black, NH		#			#	
Hispanic		#			#	
Other, NH		#			#	
Sex						
male	9,156	62.8 [^]	(49.7-74.2)	36,740	63.6	(57.5-69.3)
female	13,255	80.3	(71.7-86.8)	55,989	74.9	(70.2-79.2)
Age-adjusted^{+,&}						

& Percent is age-adjusted to the 2000 United States Population.

+ Age-adjusted and age specific percent not generated for health indicators with age range limits.

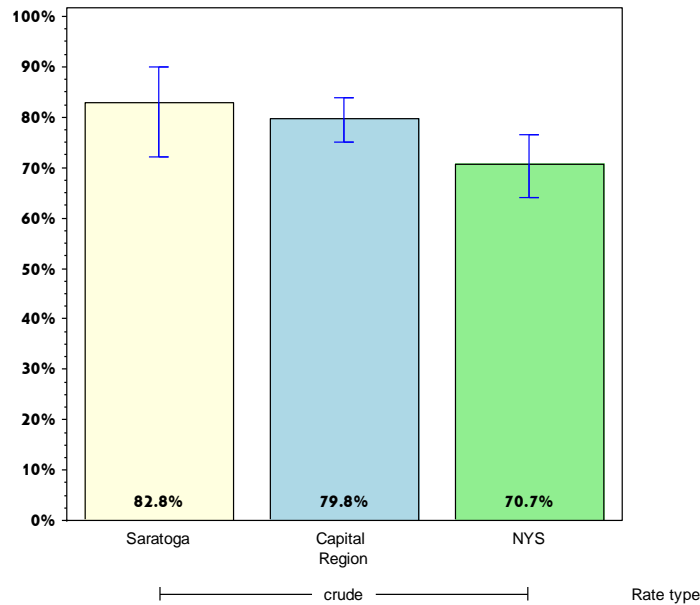
Rates with <10 in the numerator or <50 in the denominator are suppressed.

[^] Highly variable rate (confidence interval with a half-width greater than 10).

Saratoga

Promote Healthy Women, Infants, and Children

Percentage of women aged 18-44 years who had dental visit within the last year



Saratoga County

Capital Region

	Est. # of Adults	Percent	95% CI	Est. # of Adults	Percent	95% CI
Total	32,190	82.8 [^]	(72.2-89.9)	120,363	79.8	(75.1-83.8)
Age⁺						
18-24						
25-34						
35-44						
45-64						
65+						
Race						
White, NH	28,627	83.8 [^]	(72.2-91.1)	97,127	82.5	(77.5-86.6)
Black, NH		#			#	
Hispanic		#			#	
Other, NH		#			#	
Sex						
male		#			#	
female	32,190	82.8 [^]	(72.2-89.9)	120,363	79.8	(75.1-83.8)
Age-adjusted^{+,&}						

& Percent is age-adjusted to the 2000 United States Population.

+ Age-adjusted and age specific percent not generated for health indicators with age range limits.

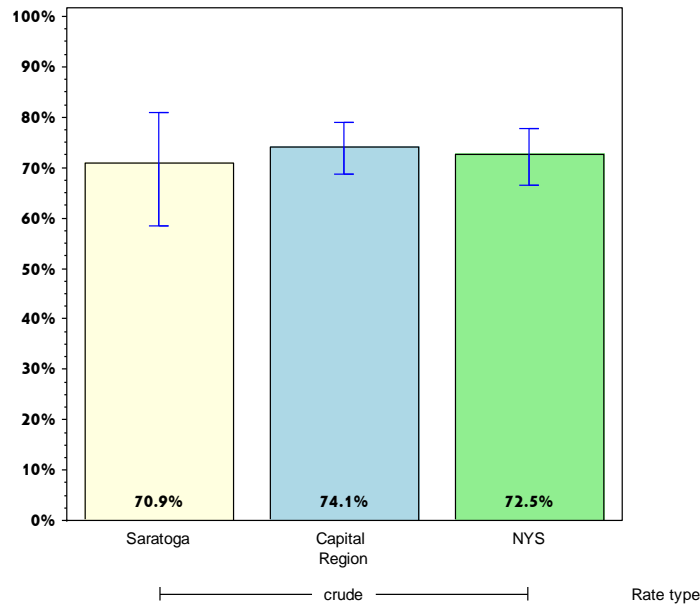
Rates with <10 in the numerator or <50 in the denominator are suppressed.

[^] Highly variable rate (confidence interval with a half-width greater than 10).

Saratoga

Promote Healthy Women, Infants, and Children

Women aged 18-44 years who saw a doctor for a routine checkup within the last year



Saratoga County

Capital Region

	Est. # of Adults	Percent	95% CI	Est. # of Adults	Percent	95% CI
Total	29,673	70.9 [^]	(58.5-80.8)	119,498	74.1	(68.6-79.0)
Age⁺						
18-24						
25-34						
35-44						
45-64						
65+						
Race						
White, NH	26,100	70.9 [^]	(57.3-81.5)	91,769	72.7	(66.2-78.4)
Black, NH		#		9,034	73.0 [^]	(53.7-86.3)
Hispanic		#		4,441	65.9 [^]	(48.1-80.1)
Other, NH		#			#	
Sex						
male		#			#	
female	29,673	70.9 [^]	(58.5-80.8)	119,498	74.1	(68.6-79.0)
Age-adjusted^{+,&}						

& Percent is age-adjusted to the 2000 United States Population.

+ Age-adjusted and age specific percent not generated for health indicators with age range limits.

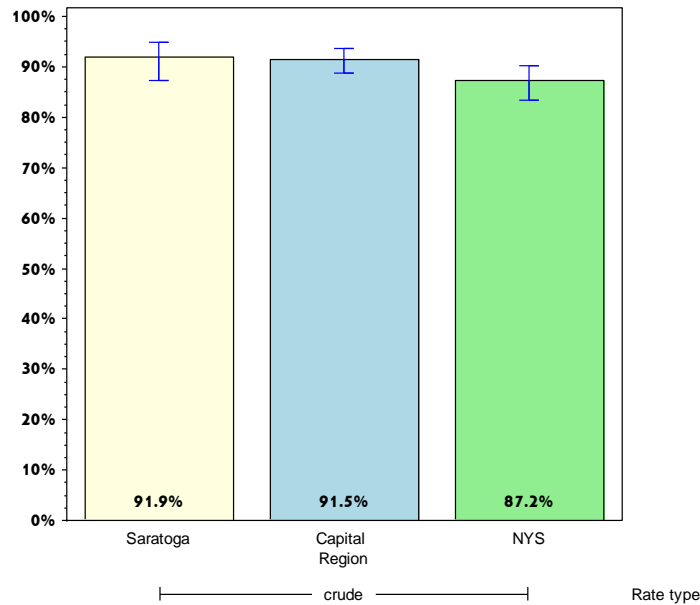
Rates with <10 in the numerator or <50 in the denominator are suppressed.

[^] Highly variable rate (confidence interval with a half-width greater than 10).

Saratoga

Promote Healthy Women, Infants, and Children

Percentage of women aged 18-64 years with health care coverage



Saratoga County

Capital Region

	Est. # of Adults	Percent	95% CI	Est. # of Adults	Percent	95% CI
Total	63,883	91.9	(87.3-94.9)	272,288	91.5	(88.8-93.5)
Age⁺						
18-24						
25-34						
35-44						
45-64						
65+						
Race						
White, NH	58,322	92.1	(87.2-95.2)	231,253	92.5	(89.8-94.6)
Black, NH		#		13,163	85.1 [^]	(67.6-94.0)
Hispanic		#		7,840	79.4 [^]	(67.0-88.0)
Other, NH		#		20,032	89.6 [^]	(68.0-97.2)
Sex						
male		#			#	
female	63,883	91.9	(87.3-94.9)	272,288	91.5	(88.8-93.5)
Age-adjusted^{+,&}						

& Percent is age-adjusted to the 2000 United States Population.

+ Age-adjusted and age specific percent not generated for health indicators with age range limits.

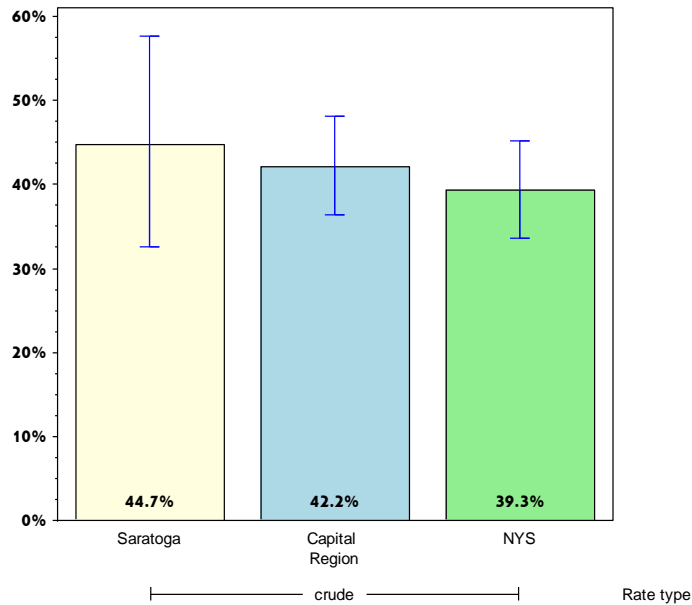
Rates with <10 in the numerator or <50 in the denominator are suppressed.

[^] Highly variable rate (confidence interval with a half-width greater than 10).

Saratoga

Promote Healthy Women, Infants, and Children

Percentage of women aged 18-44 years whose health care provider discussed planning a healthy pregnancy



Saratoga County

Capital Region

	Est. # of Adults	Percent	95% CI	Est. # of Adults	Percent	95% CI
Total	17,419	44.7 [^]	(32.5-57.6)	63,605	42.2	(36.4-48.1)
Age⁺						
18-24						
25-34						
35-44						
45-64						
65+						
Race						
White, NH	16,382	48.3 [^]	(34.9-62.1)	51,464	43.9	(37.5-50.6)
Black, NH		#			#	
Hispanic		#			#	
Other, NH		#			#	
Sex						
male		#			#	
female	17,419	44.7 [^]	(32.5-57.6)	63,605	42.2	(36.4-48.1)
Age-adjusted^{+,&}						

& Percent is age-adjusted to the 2000 United States Population.

+ Age-adjusted and age specific percent not generated for health indicators with age range limits.

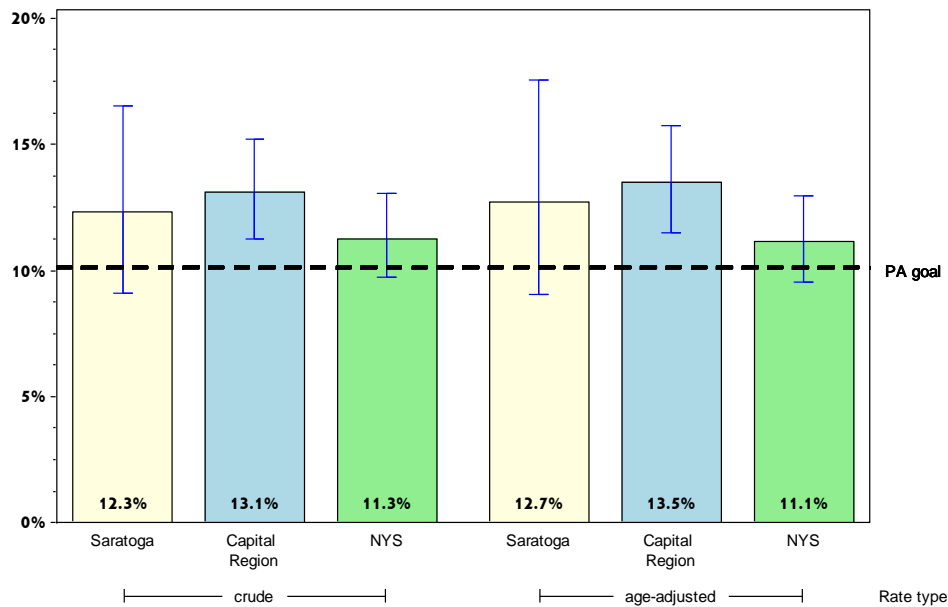
Rates with <10 in the numerator or <50 in the denominator are suppressed.

[^] Highly variable rate (confidence interval with a half-width greater than 10).

Saratoga

Promote Mental Health and Prevention Substance Abuse

Percentage of adults with poor mental health for 14 or more days in the last month



Saratoga County

Capital Region

	Est. # of Adults	Percent	95% CI	Est. # of Adults	Percent	95% CI
Total	20,954	12.3	(9.1-16.5)	97,381	13.1	(11.2-15.2)
Age		#				
18-24		#		15,415	16.5	(10.0-25.9)
25-34	3,702	15.0 [^]	(5.9-33.0)	21,884	17.7	(12.4-24.8)
35-44	3,654	12.1 [^]	(4.4-28.8)	15,297	13.4	(9.0-19.6)
45-64	7,299	11.7	(7.7-17.3)	35,365	13.7	(11.1-16.8)
65+	2,259	7.0	(3.5-13.6)	8,895	6.3	(4.5-8.8)
Race						
White, NH	17,714	11.1	(8.2-14.8)	77,087	12.2	(10.3-14.4)
Black, NH		#		10,860	29.8 [^]	(18.5-44.2)
Hispanic		#		4,600	19.0	(12.7-27.4)
Other, NH		#		4,834	9.7 [^]	(4.2-20.9)
Sex						
male	9,660	11.5	(7.1-18.1)	45,948	12.7	(9.9-16.1)
female	11,294	13.1	(8.8-19.0)	51,433	13.5	(11.2-16.2)
Age-adjusted^{&}		12.7	(9.1-17.6)		13.5	(11.5-15.7)

& Percent is age-adjusted to the 2000 United States Population.

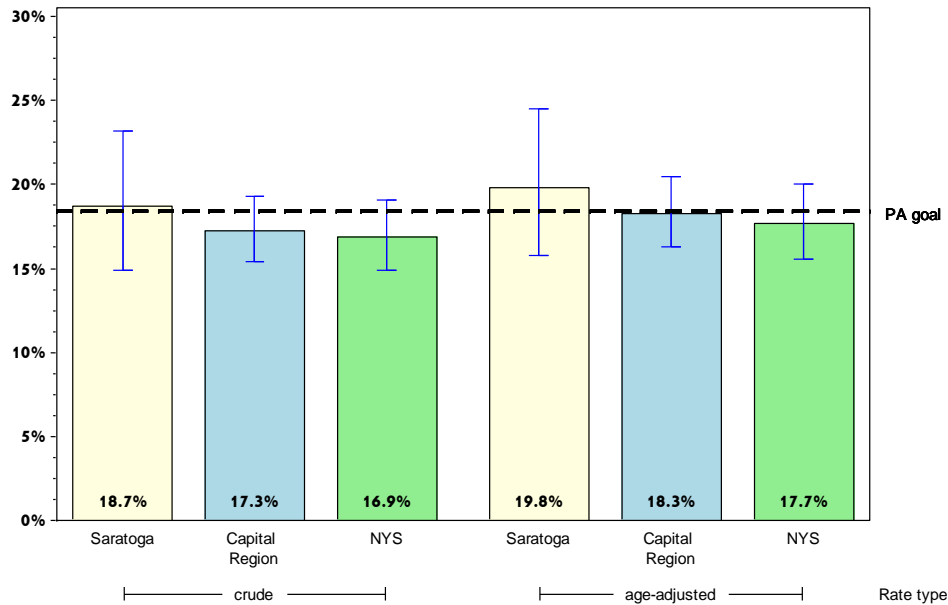
Rates with <10 in the numerator or <50 in the denominator are suppressed.

[^] Highly variable rate (confidence interval with a half-width greater than 10).

Saratoga

Promote Mental Health and Prevention Substance Abuse

Percentage of adult binge drinking during the past month*



Saratoga County

Capital Region

	Est. # of Adults	Percent	95% CI	Est. # of Adults	Percent	95% CI
Total	30,910	18.7	(14.9-23.2)	124,613	17.3	(15.4-19.3)
Age		#				
18-24		#		26,578	29.9 [^]	(21.5-40.0)
25-34	9,178	37.9 [^]	(25.1-52.7)	33,259	27.9	(22.6-33.9)
35-44	6,375	21.9 [^]	(11.9-36.9)	21,657	19.6	(15.1-25.1)
45-64	10,606	17.5	(12.8-23.5)	35,598	14.0	(11.9-16.6)
65+	2,917	9.1	(4.8-16.4)	6,695	4.8	(3.4-6.8)
Race						
White, NH	28,047	18.0	(14.5-22.2)	109,332	17.7	(15.8-19.8)
Black, NH		#		6,496	18.9 [^]	(9.3-34.8)
Hispanic		#		3,636	15.3	(9.8-23.0)
Other, NH		#		5,148	11.1 [^]	(4.9-23.0)
Sex						
male	18,332	23.2	(17.6-29.8)	76,161	21.9	(19.0-25.1)
female	12,579	14.6	(9.9-20.9)	48,452	12.9	(10.7-15.5)
Age-adjusted^{&}		19.8	(15.8-24.5)		18.3	(16.3-20.4)

* Men who have five or more drinks , women having four or more drinks on one occasion

& Percent is age-adjusted to the 2000 United States Population.

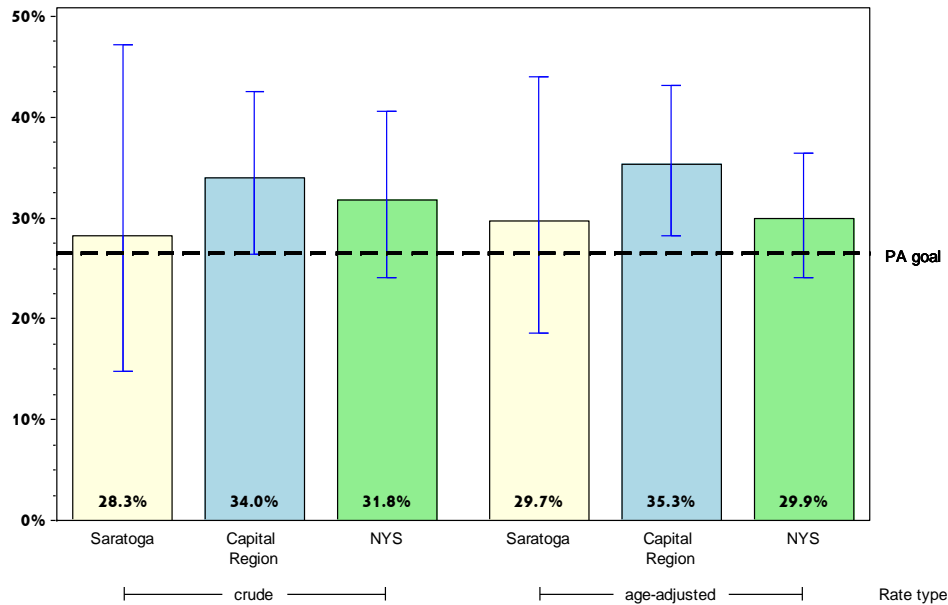
Rates with <10 in the numerator or <50 in the denominator are suppressed.

[^] Highly variable rate (confidence interval with a half-width greater than 10).

Saratoga

Promote Mental Health and Prevention Substance Abuse

Percentage of cigarette smoking among adults who report poor mental health



	Saratoga County			Capital Region		
	Est. # of Adults	Percent	95% CI	Est. # of Adults	Percent	95% CI
Total	5,626	28.3 [^]	(14.8-47.1)	32,029	34.0	(26.4-42.5)
Age		#			#	
18-24		#			#	
25-34		#		8,601	39.7 [^]	(22.1-60.5)
35-44		#			#	
45-64		#		10,462	29.8 [^]	(20.9-40.6)
65+		#			#	
Race						
White, NH	3,773	22.5 [^]	(13.3-35.5)	25,081	33.3	(25.0-42.8)
Black, NH		#			#	
Hispanic		#			#	
Other, NH		#			#	
Sex						
male		#		17,555	39.9 [^]	(27.2-54.2)
female	3,719	34.1 [^]	(14.8-60.6)	14,474	28.8	(20.8-38.5)
Age-adjusted^{&}		29.7 [^]	(18.5-44.0)		35.3	(28.2-43.2)

& Percent is age-adjusted to the 2000 United States Population.
 # Rates with <10 in the numerator or <50 in the denominator are suppressed.
 ^ Highly variable rate (confidence interval with a half-width greater than 10).