



# Saratoga County Health Profile

**Prepared by:**

---



[www.hcdiny.org](http://www.hcdiny.org)

## Saratoga County

### General Health:

Indicator	Year(s)	Saratoga County	Capital Region	NYS, except NYC	PA 2017 Objective	County # change needed to reach PA Objective
	For rate/% For #	Rate/% #	Rate/%	Rate/%	Rate/%	
Total mortality rate per 100,000, age-adjusted <i>Number:</i>	2010-2012 2012	643.9 1,661	712.0	681.1		
Percentage of premature deaths (<75 years) <i>Number:</i>	2010-2012 2012	38.8 635	37.5	37.3		
Years of Potential Life Lost (YPLL) per 100,000 (<75 years)	2010-2012	4,810.3	5,966.4	5,828.4		
Rate of preventable hospitalizations - ages 18+ yrs, age-adjusted <i>Number:</i>	2013	85.1 1,669	103.6	113.2	133.3	*
Total ED visit rate per 10,000, age-adjusted <i>Number:</i>	2010-2012 2012	2,635.3 54,244	3,573.5	3,668.9		
Percentage of adults with health insurance - ages 18-64 yrs <i>Number w/o health insurance:</i>	2013	91.3 12,395	89.0		100.0	-12,395
Percentage of adults with a regular health care provider - ages 18+ yrs, age-adjusted <i>Number w/o regular health care provider:</i>	2013-2014	90.2 15,317	85.9	84.6	90.8	-938
Percentage of adults not receiving regular care due to cost, age-adjusted <i>Number:</i>	2013-2014	10.6 16,983	10.8	12.0		

PA, Prevention Agenda;

\*=PA objective reached

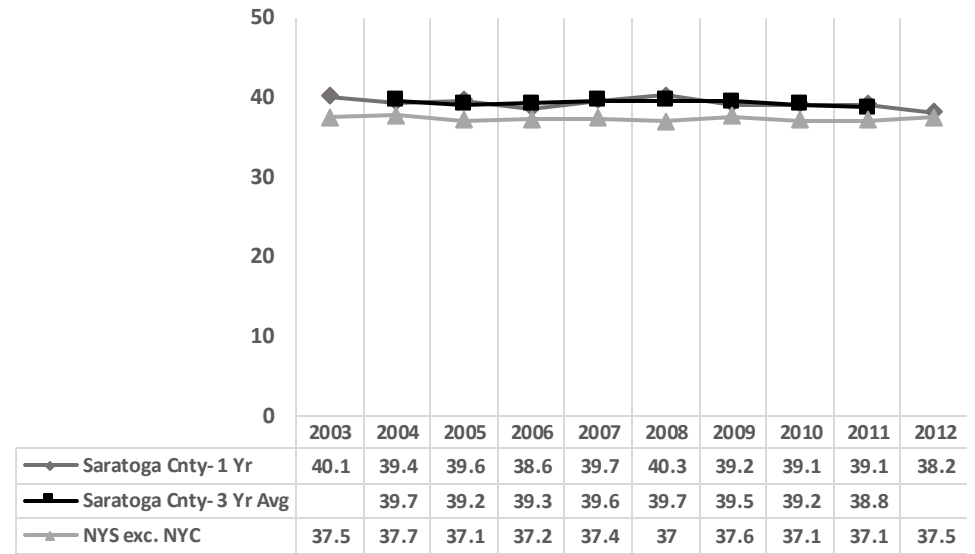
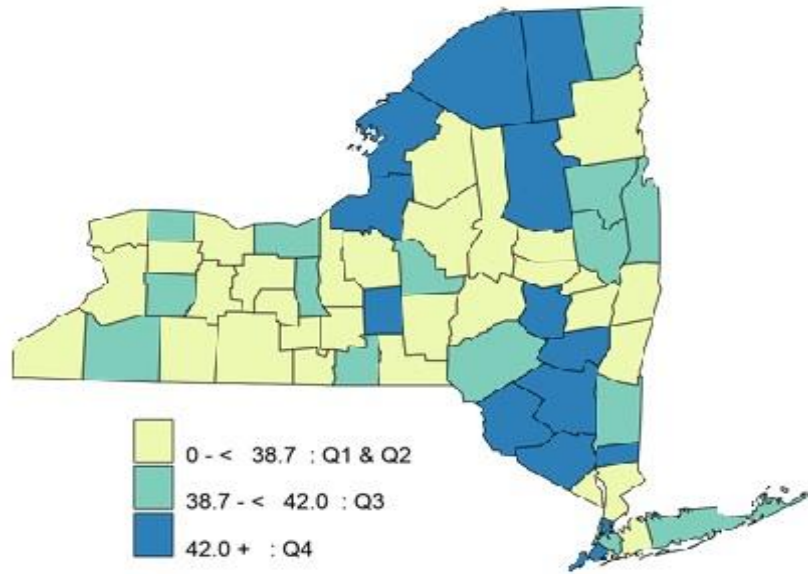
=Rate ranked in 3<sup>rd</sup> Quartile among all counties of NYS

### Five Leading Causes of Death & Premature Death, rates (per 100,000) and counts:

Rank	Leading Causes of Death (2012)				Leading Causes of Premature Death (<75 years) (2010-2012)			
	Saratoga County		NYS, excluding NYC		Saratoga County		NYS, excluding NYC	
	Cause	Rate Number	Cause	Rate	Cause	Rate Avg. Number	Cause	Rate
#1	Cancer	170 446	Heart disease	182	Cancer	285 234	Cancer	295
#2	Heart Disease	162 429	Cancer	165	Heart Disease	149 122	Heart Disease	178
#3	CLRD	45 113	CLRD	38	CLRD	63 39	Unintentional Injury	72
#4	Stroke	36 93	Stroke	30	Unintentional Injury	46 31	CLRD	38
#5	Unintentional Injury	21 49	Unintentional Injury	31	Suicide	42 25	Stroke	26

CLRD, Chronic Lower Respiratory Disease

Percentage of Premature Deaths (< 75 years) (2010-2012)



### Reduce Obesity in Children and Adults:

Indicator	Year(s)	Saratoga County	Capital Region	NYS, except NYC	PA 2017 Objective	County # change needed to reach PA Objective
	For rate/% For #	Rate/% #	Rate/%	Rate/%	Rate/%	
Percentage of adults who are obese, age-adjusted <i>Number:</i>	2013-2014	25.9 41,920	27.8	27.0	23.2	-4,370
Percentage of children & adolescents who are obese <i>Number:</i>	2010-2012	14.2 5,276	17.4	17.6	16.7	*
Percentage of adults not engaged in some type of leisure time physical activity, age-adjusted <i>Number:</i>	2013-2014	22.1 37,246	23.4	26.2		
Percentage of pregnant women in WIC who were pre-pregnancy obese <i>Number:</i>	2010-2012 2012	34.5 208	12.5	14.4		

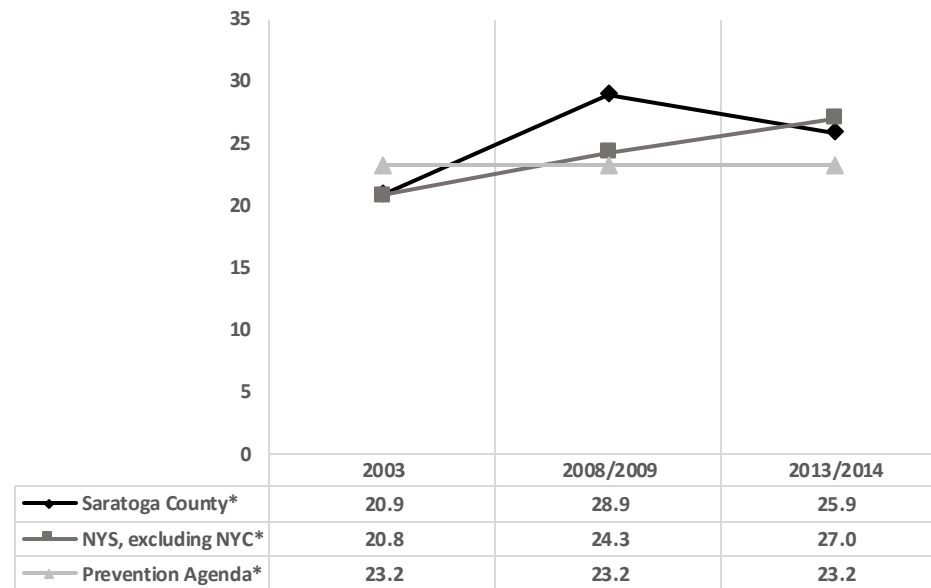
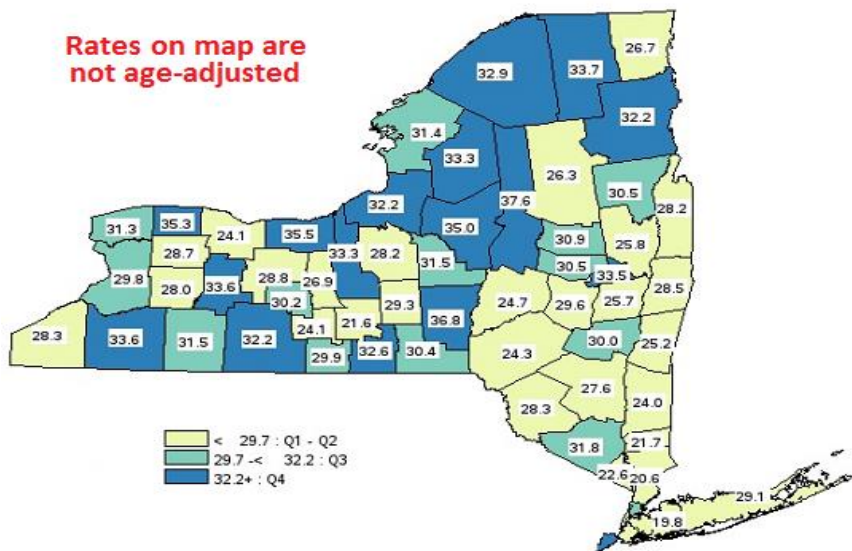
### High Quality Chronic Disease Preventive Care and Management:

Indicator	Year(s)	Saratoga County	Capital Region	NYS, except NYC	PA 2017 Objective	County # change needed to reach PA Objective
	For rate/% For #	Rate/% #	Rate/%	Rate/%	Rate/%	
Percent diabetes prevalence in adults, age-adjusted <i>Number:</i>	2013-2014	8.3 15,556	8.7	8.2		
Diabetes (primary diagnosis) hospitalization rate per 10,000, age-adjusted <i>Number:</i>	2010-2012 2012	9.3 208	12.5	14.4		
Hospitalization rate for short-term complications of diabetes per 10,000- age 18+ yrs <i>Number:</i>	2011-2013	4.1 72	6.2	5.8	4.9	*
Cardiovascular disease mortality rate per 100,000, age-adjusted <i>Number:</i>	2010-2012 2012	215.6 556	234.5	235.2		
Cardiovascular disease hospitalization rate per 10,000, age-adjusted <i>Number:</i>	2010-2012 2012	113.8 2,639	121.4	143.6		
Coronary heart disease mortality rate per 100,000, age-adjusted <i>Number:</i>	2010-2012 2012	115.6 299	124.5	135.8		
Coronary heart disease hospitalization rate per 10,000, age-adjusted <i>Number:</i>	2010-2012 2012	23.6 546	24.7	35.9		
Congestive heart failure mortality rate per 100,000, age-adjusted <i>Number:</i>	2010-2012 2012	11.5 27	18.0	15.6		
Congestive heart failure hospitalization rate per 10,000, age-adjusted <i>Number:</i>	2010-2012 2012	19.0 404	21.3	24.2		
Cerebrovascular disease (stroke) mortality rate per 100,000, age-adjusted <i>Number:</i>	2010-2012 2012	35.4 93	32.3	30.6		
Cerebrovascular disease (stroke) hospitalization rate per 10,000, age-adjusted <i>Number:</i>	2010-2012 2012	20.7 502	22.5	24.5		
Heart attack mortality rate per 100,000, age-adjusted <i>Number:</i>	2010-2012 2012	28.9 70	28.2	35.6		
Heart attack hospitalization rate per 10,000, age-adjusted <i>Number:</i>	2013	11.6 323	13.2	15.2	14.0	*
Chronic kidney disease hospitalization rate per 10,000 (any diagnosis), age-adjusted <i>Number:</i>	2010-2012 2012	105.6 2,458	103.7	96.7		
Chronic kidney disease ED visit rate per 10,000 (any diagnosis), age-adjusted <i>Number:</i>	2010-2012 2012	111.1 2,772	97.1	91.8		

PA, Prevention Agenda; \*=PA objective reached;

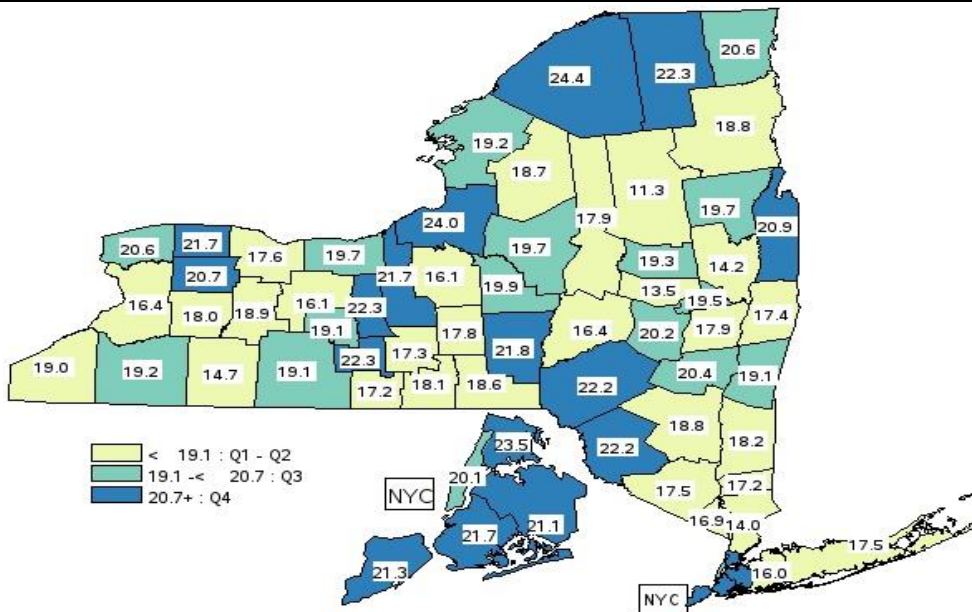
■ =Rate ranked in 3<sup>rd</sup> Quartile among all counties of NYS; ■ =Ranked in 4<sup>th</sup> Quartile among all counties of NY

### Percentage of Adults who are Obese (2013-2014)

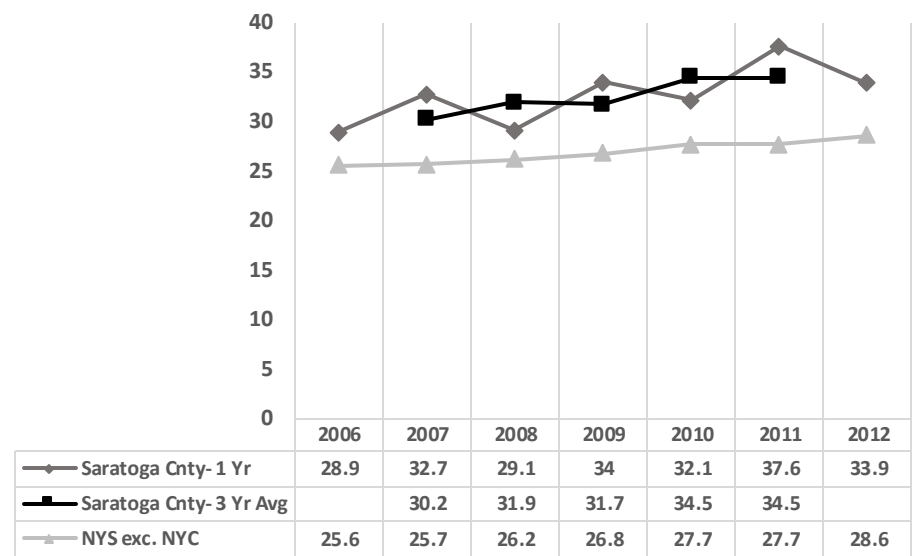
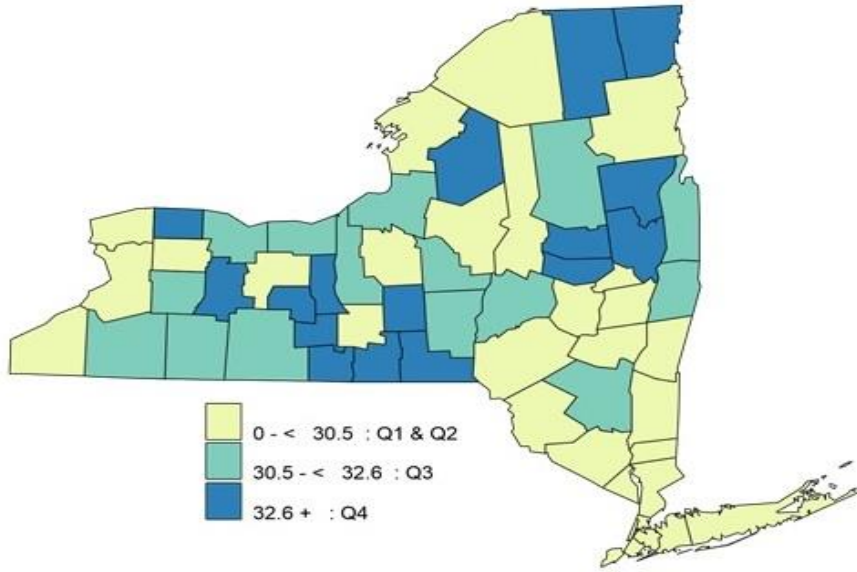


\*Rates on graph are age-adjusted

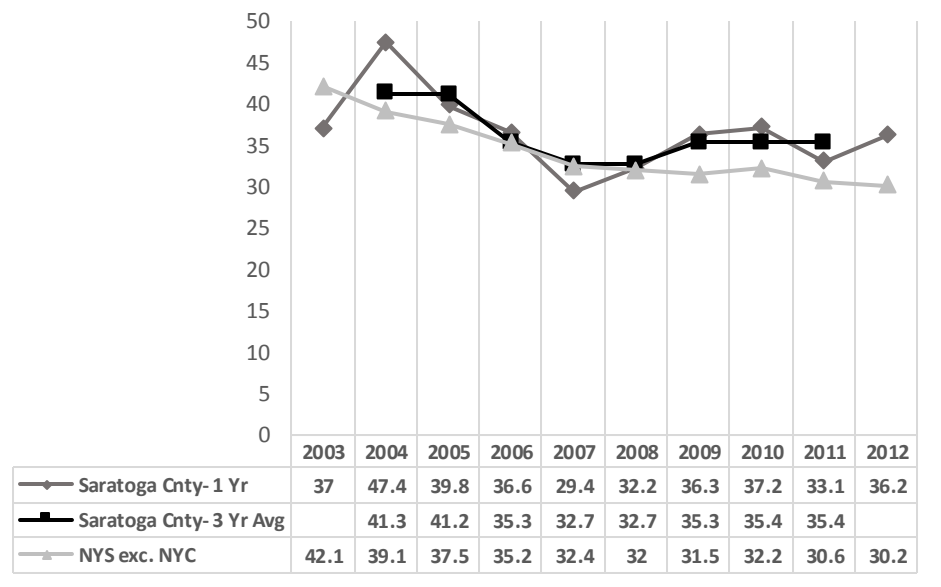
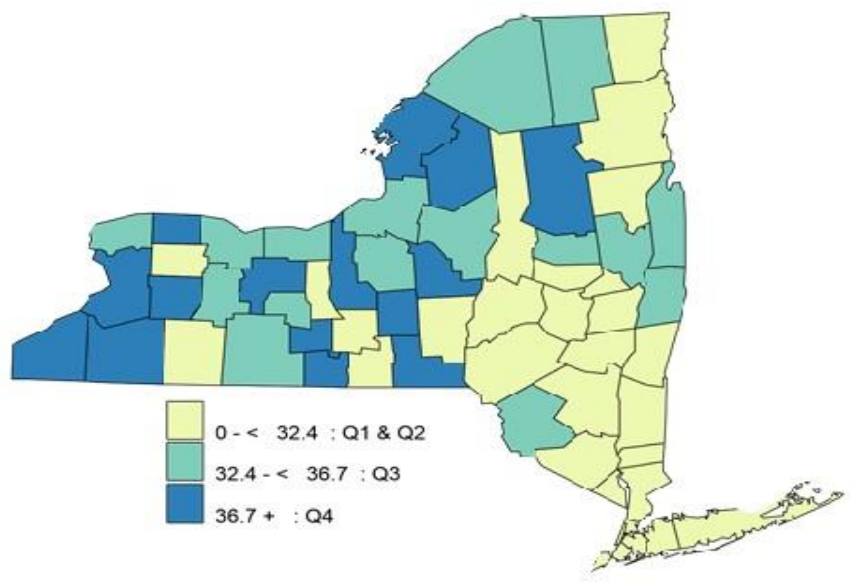
### Percentage of Children and Adolescents who are Obese (2010-2012)



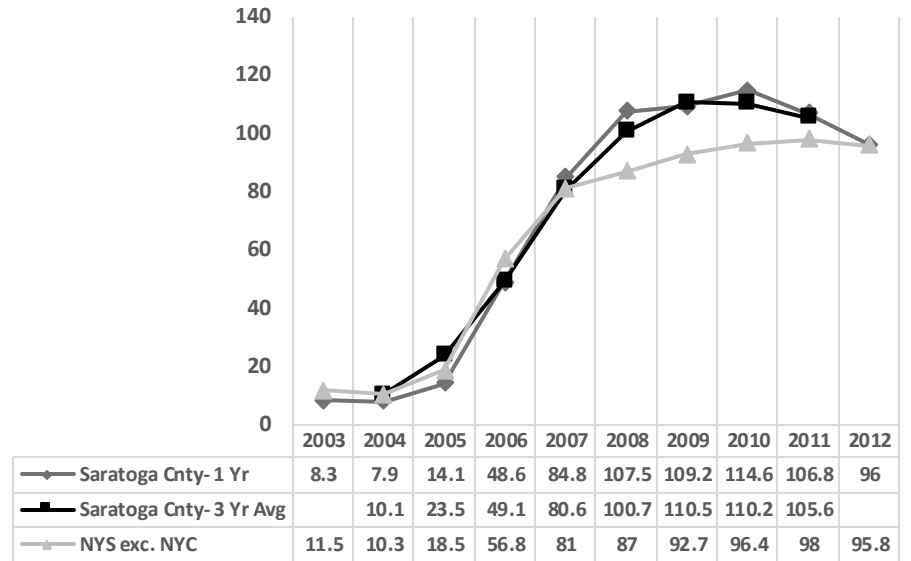
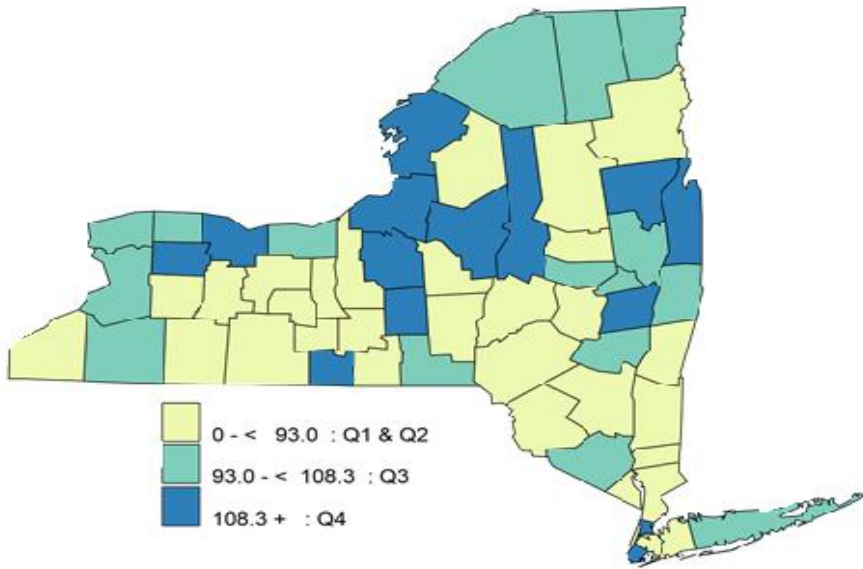
**Percentage of Women in WIC Who Were Pre-Pregnancy Obese (2010-2012)**



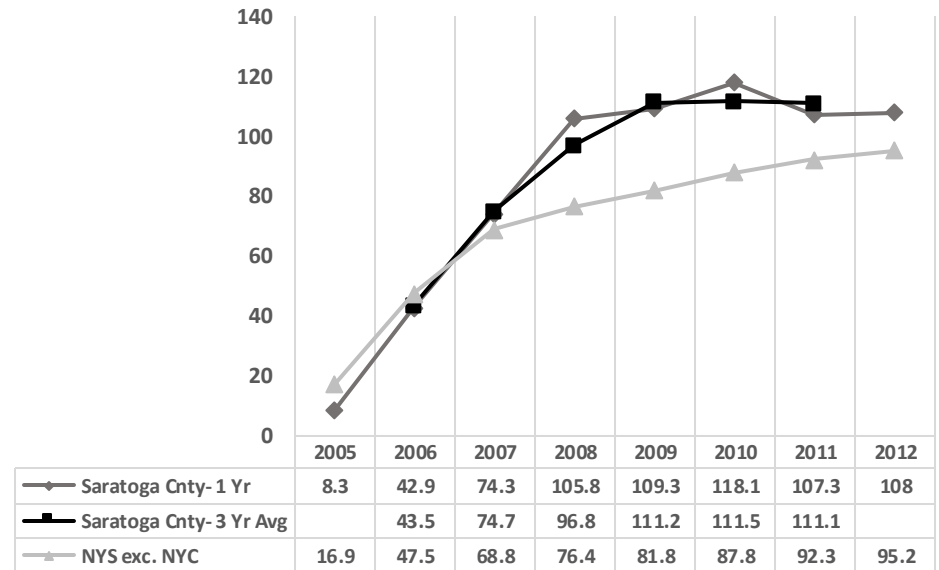
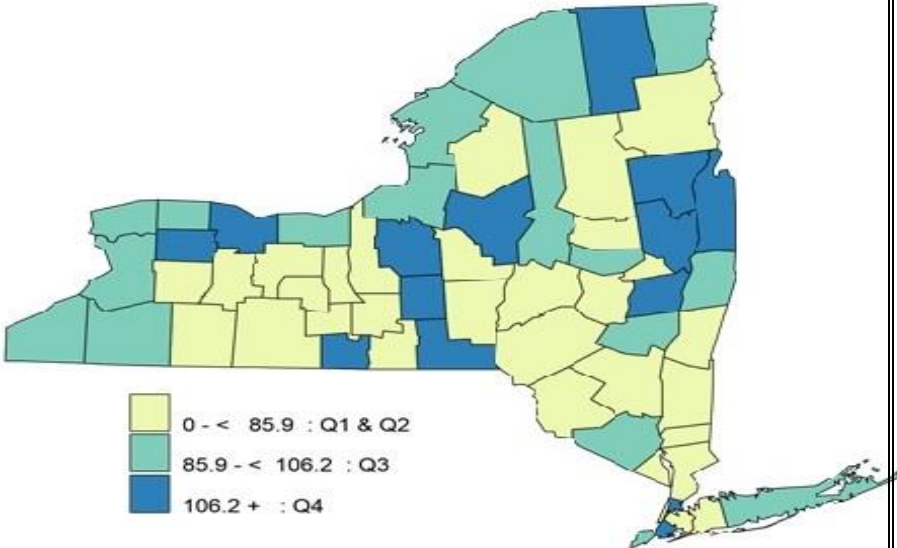
**Cerebrovascular Disease (Stroke) Mortality Rate per 100,000, Age-Adjusted**



### Chronic Kidney Disease Hospitalization (any diagnosis) Rate per 10,000, Age-Adjusted



### Chronic Kidney Disease ED Visit (any diagnosis) Rate per 10,000, Age-Adjusted





## Mental Health Promotion/Substance Abuse Prevention- Prescription Drug Use among Adolescents

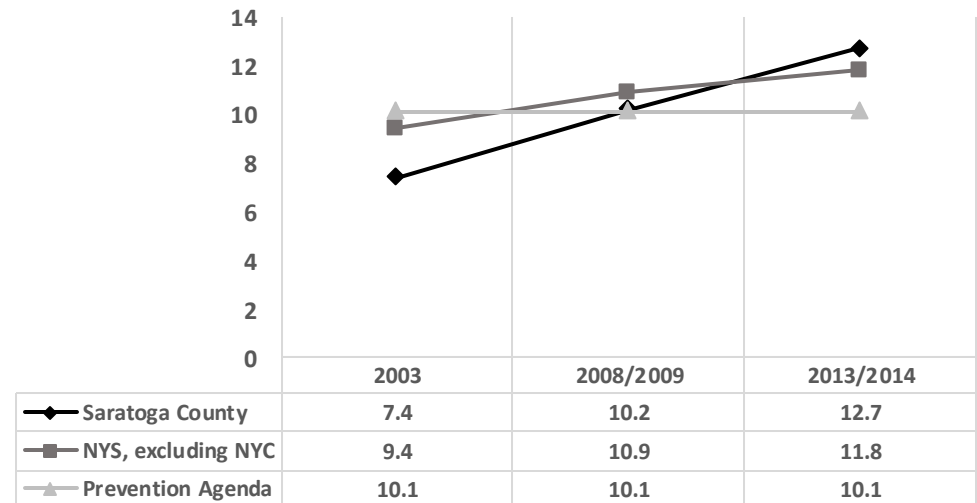
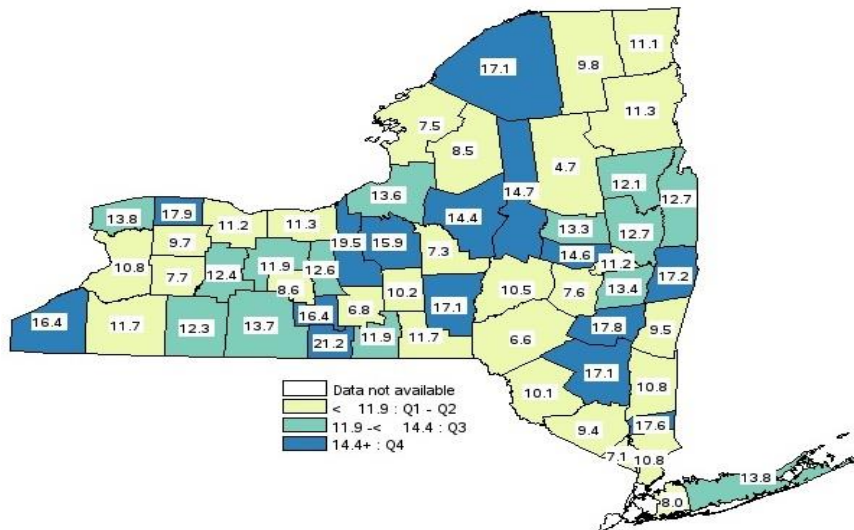
Indicator	Year(s)	Saratoga County	Capital Region	NYS, except NYC	PA 2017 Objective	County # change needed to reach PA Objective
	For rate/% For #	Rate/% #	Rate/%	Rate/%	Rate/%	
Percentage of adults with poor mental health for 14+ days in the past month, age-adjusted <i>Number:</i>	2013-2014	12.7 17,889	13.5	11.8	10.1	-3,662
Suicide death rate per 100,000, age-adjusted <i>Number:</i>	2011-2013 2013	13.0 30	10.8	8.0	5.9	-16
Self-inflicted injury hospitalization rate per 10,000, age-adjusted <i>Number:</i>	2010-2012 2012	8.3 162	8.1	6.8		
Self-inflicted injury hospitalization rate per 10,000, ages 15-19 years <i>Number:</i>	2010-2012 2012	15.1 22	14.1	12.1		
Drug-related hospitalization rate per 10,000, age-adjusted <i>Number:</i>	2010-2012 2012	13.8 239	18.4	21.5		
Adult binge drinking during the past month, age-adjusted <i>Number:</i>	2013-2014	19.7 27,749	18.3	17.4	18.4	-1,831

PA, Prevention Agenda

\*=PA objective reached

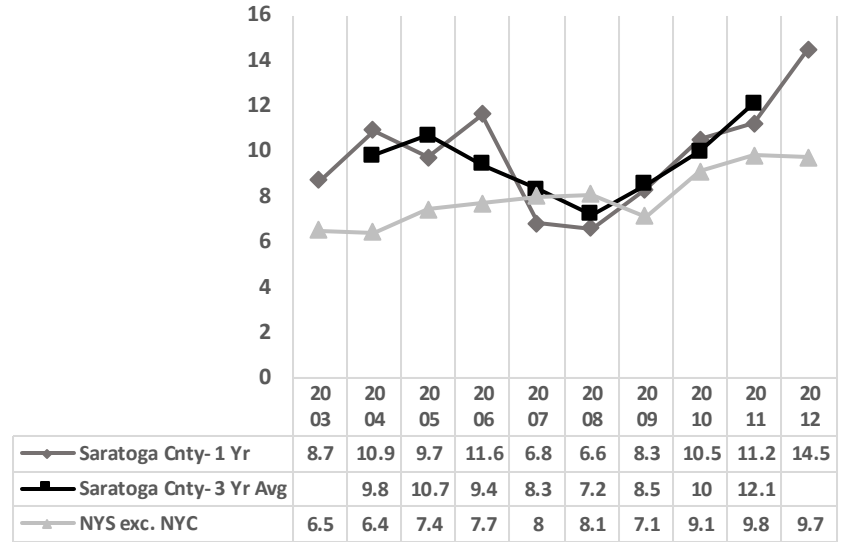
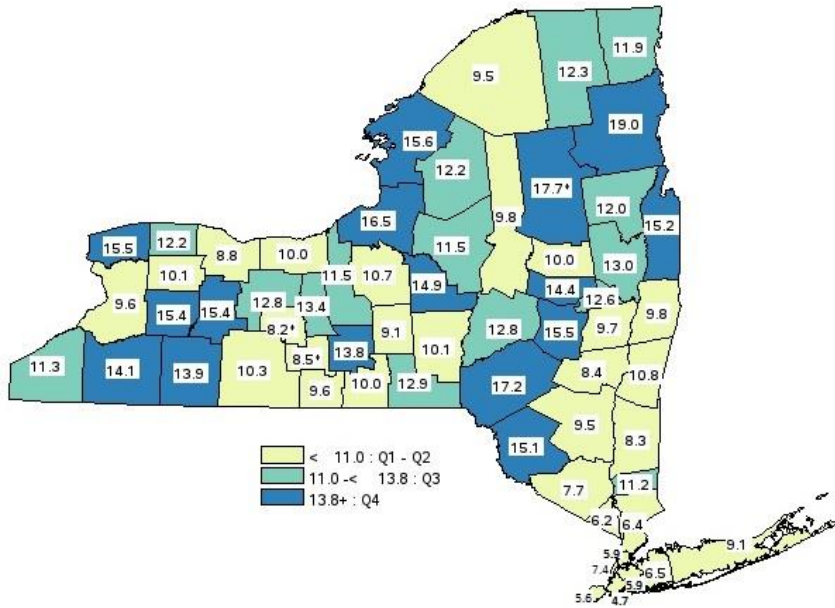
■ = Ranked in 3<sup>rd</sup> Quartile among all counties of NYS

### Adults with Poor Mental Health for 14+ Days in Past Month, Age-Adjusted

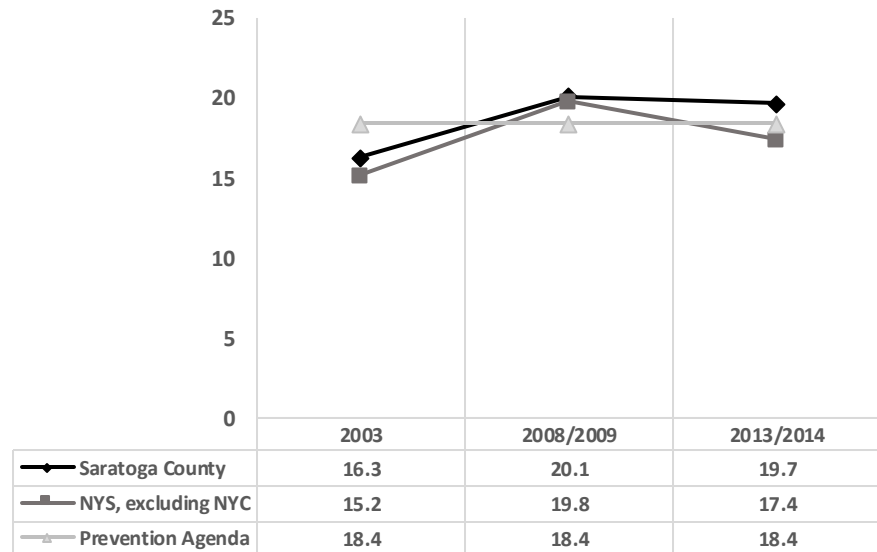
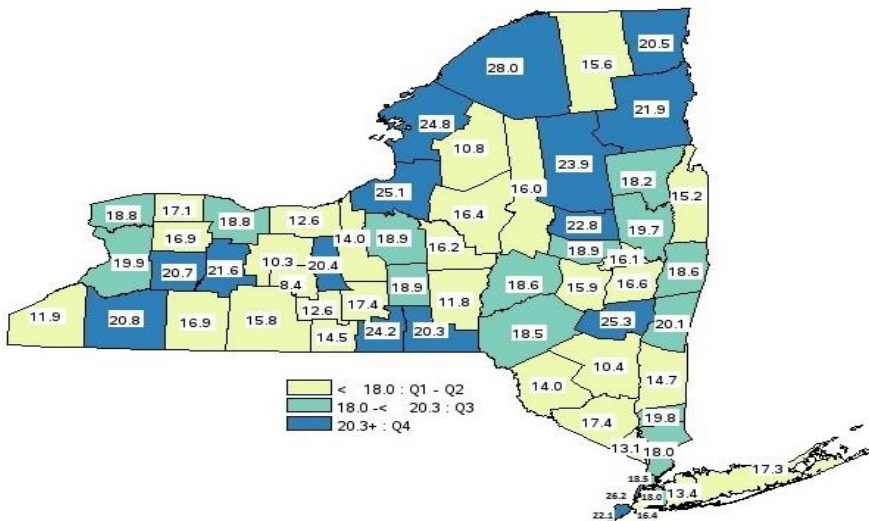




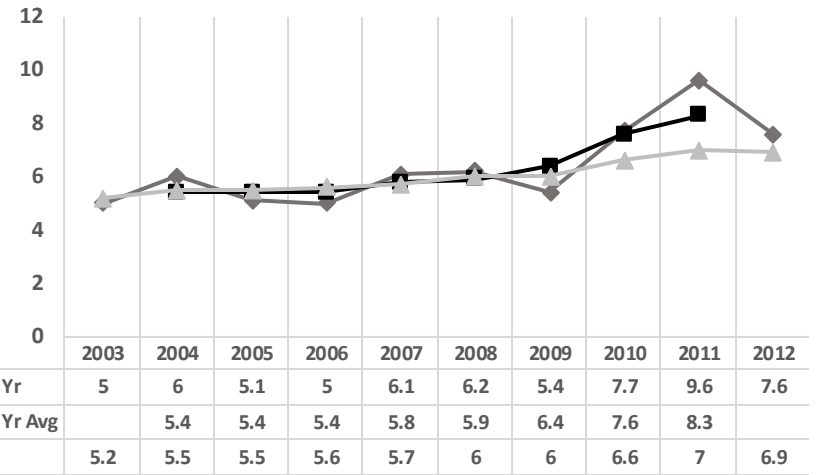
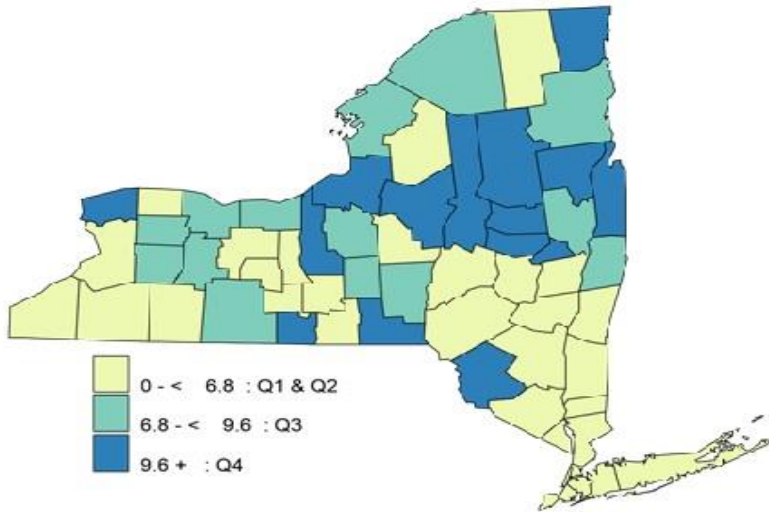
### Suicide Mortality Rate per 100,000, Age-Adjusted



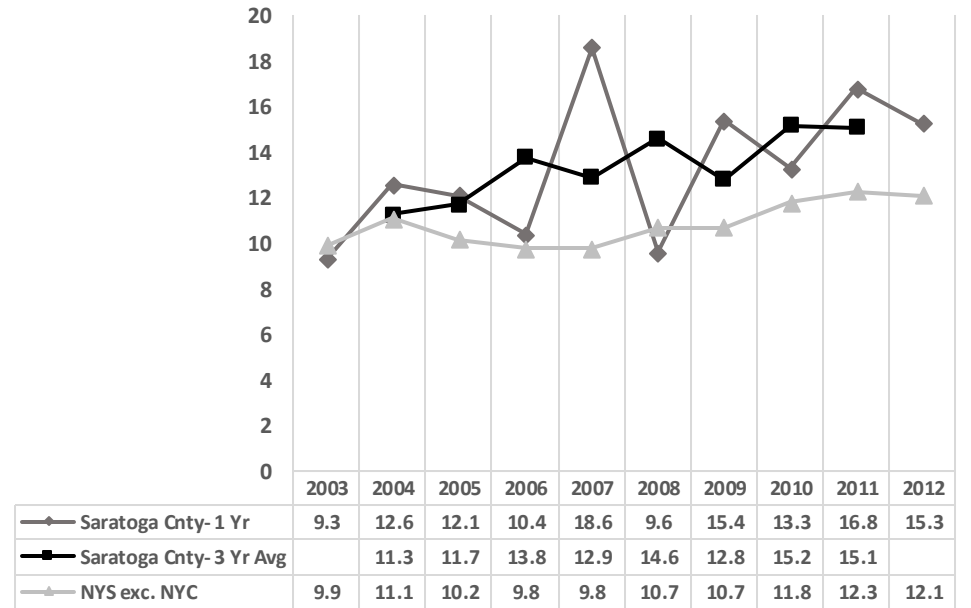
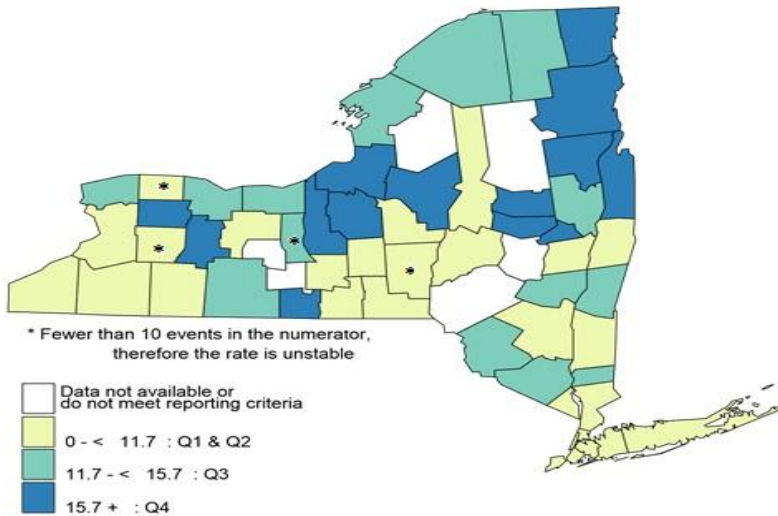
### Percentage of Adult Binge-Drinking During Month, Age-Adjusted



### Self-Inflicted Injury Hospitalization Rate per 10,000, Age-Adjusted



### Self-Inflicted Injury Hospitalization Rate per 10,000, Ages 15-19 Years



## Prevent Vaccine-Preventable Diseases & HAIs

Indicator	Year(s)	Saratoga County	Capital Region	NYS, except NYC	PA 2017 objective	County # change needed to reach PA objective
	For rate/% For #	Rate/% Number	Rate/%	Rate/%	Rate/%	
Percentage of children with immunizations- age 19-35 months <i>Number not immunized:</i>	2013	71.0 1,021	69.5	60.0	80.0	-317
Pertussis incidence per 100,000 <i>Number:</i>	2010-2012 2012	14.3 37	12.6	13.0		

## Healthy Infants & Children

Indicator	Year(s)	Saratoga County	Capital Region	NYS, except NYC	PA 2017 Objective	County # change needed to reach PA Objective
	For rate/% For #	Rate/% #	Rate/%	Rate/%	Rate/%	
Percentage of pre-term births (<37 wks gestation) <i>Number:</i>	2013	9.0 202	10.7	10.9	10.2	*
Percentage of children with any kind of health insurance- ages 0-19 <i>Number without health insurance:</i>	2013	96.8 1,713	96.3		100	-1,713
Percentage of children with recommended # of well child visits in govt sponsored insurance programs <sup>1</sup> <i>Number without well child visits:</i>	2013	72.6 1,536	68.5	70.3	76.9	-241

PA, Prevention Agenda; \*=PA objective reached

■ = Ranked in 3<sup>rd</sup> Quartile among all counties of NYS

<sup>1</sup> Government sponsored insurance programs include Medicaid & Child Health Plus

## Pertussis Incidence per 100,000 (2010-2012)

