

PROMOTE HEALTHY WOMEN, INFANTS, AND CHILDREN





CHILD ACCESS TO CARE IN COLUMBIA & GREENE COUNTIES

The Effect of Child Health Insurance on the Population

Source: 2013 NYS Medicaid and Child Health Plus Data as of July, 2015



	Columbia	Greene	Capital Region
Number of children who did not have the recommended number of well child visits in govt. sponsored insurance programs per year* (2013)	683	519	11,000
Number of children 0-19 years without any kind of health insurance per year (2013)	719	469	8,400

* Children aged 0-15 months, 3-6 years and 12-21 years in Medicaid or Child Health Plus Programs.

Child Health Insurance Indicators and Significance Compared To New York State (excl. NYC)

Source: 2013 NYS Medicaid and Child Health Plus Data as of July 2015/ Census Data as of March 2015

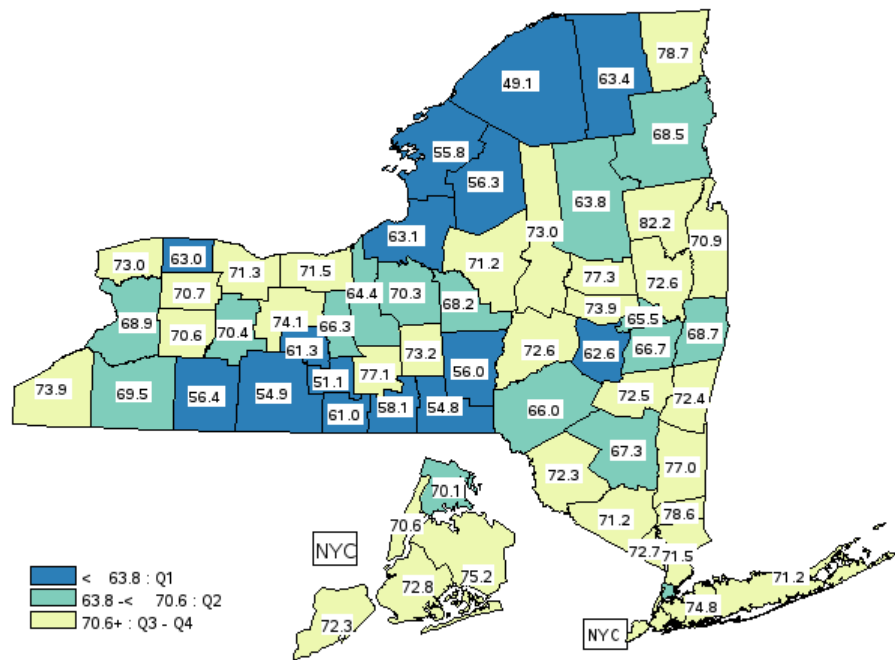


	Columbia		Greene		Capital Region		NYS
% of children who had the recommended number of well child visits in govt. sponsored insurance programs	72.4	Higher	72.5	Higher	68.5	Lower	70.3
% of children 0-19 years with any kind of health insurance	94.5	Lower	95.3	Slightly Lower	96.3	Higher	95.9

* Children aged 0-15 months, 3-6 years and 12-21 years in Medicaid or Child Health Plus Programs.

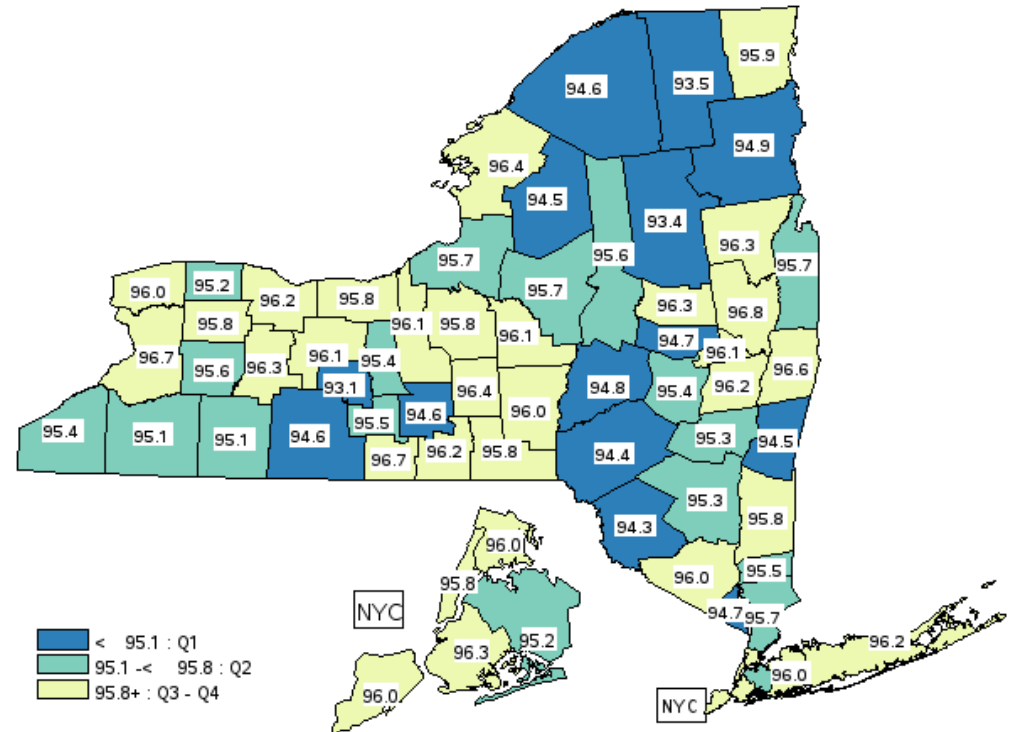


Percent of children who receive recommended number of well child visits, 2013



2013 NYS Medicaid and Child Health Plus Data as of July, 2015

Percent of children with health insurance, 2013



2013 US Census Bureau data as of March 2015



EQUITY

Percent of Children Who Had the Recommended Number of Well Child Visits

Source: 2013 NYS Medicaid and Child Health Plus Data as of July, 2015



	Columbia	Greene	Capital Region	Upstate
0-15 months	90.5	92.9	88.9	85.4
3-6 years	80.2	82.5	78.9	81.2
12-21 years	65.7	65.2	60.2	61.9

Child Access to Care Summary



Annually, the two counties have:

- 1,202 children who do not receive the recommended number of well child visits in government sponsored insurance programs per year
- 1,188 children aged 0-19 years without any kind of health insurance per year

Child Access to Care Summary



- Both counties have higher percentages of children receiving the recommended number of well child visits in government-sponsored insurance programs compared to NYS, excluding NYC
- The % of children receiving the recommended number of well child visits significantly decreased with age in both Columbia and Greene counties
- Columbia county has a lower % of children 0-19 years of age with any kind of health insurance compared to NYS; Greene county has a slightly lower % of children 0-19 years of age without any kind of health insurance compared to NYS.



CHILDHOOD LEAD IN COLUMBIA & GREENE

The Effect of Childhood Lead on the Population,

2011-2013 NYS Child Lead Poisoning Prevention Program Data as of May 2015



	Columbia	Greene	Capital Region
Number of children <72 months with confirmed blood lead levels 10+ µg/dl per year (2013)	21	12	246
Number of children without lead screening aged 9-17 months per year (born in 2010)	296	334	5,250
Number of children without 2 lead screenings aged 18-35 months per year (born in 2010)	399	335	7,032

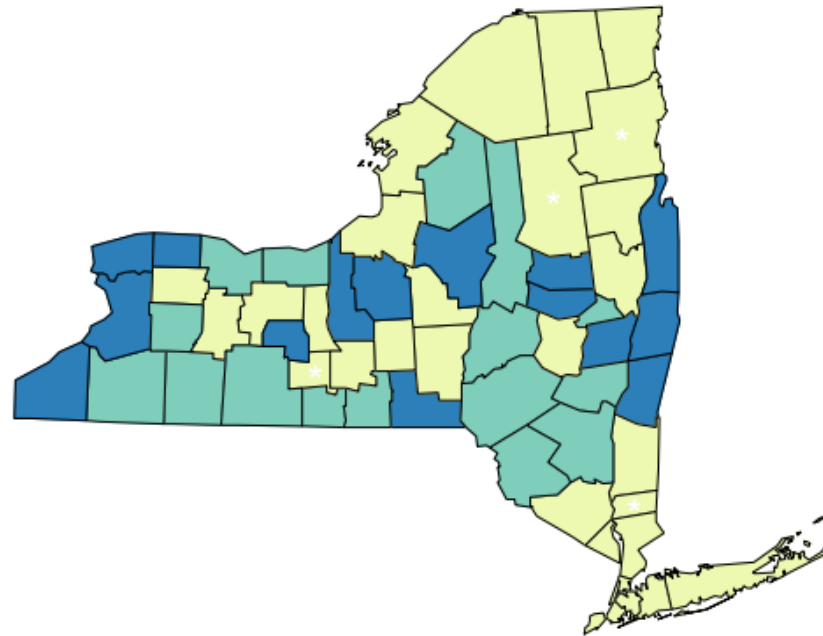
Childhood Lead Indicators and Significance Compared to New York State (excl. NYC)

Source: 2011-2013 NYS Child Health Lead Poisoning Prevention Program Data as of May, 2015

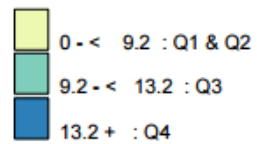


	Columbia		Greene		Capital Region		Upstate
Confirmed blood lead levels 10+ µg/dl g/dl in children <72 months/1,000	15.4	Significantly Higher	12.6	Significantly Higher	11.6	Significantly Higher	8.8
% of children with lead screening 9-17 months (born in 2010)	50.3	Significantly Lower	27.5	Significantly Lower	47.2	Significantly Lower	53.5
% of children with lead screening 18-35 months (born in 2010)	42.5	Significantly Lower	37.5	Significantly Lower	39.8	Significantly Lower	65.6
% of children with 2 lead screenings by 18-35 months (born in 2010)	32.9	Significantly Lower	27.3	Significantly Lower	29.3	Significantly Lower	42.1

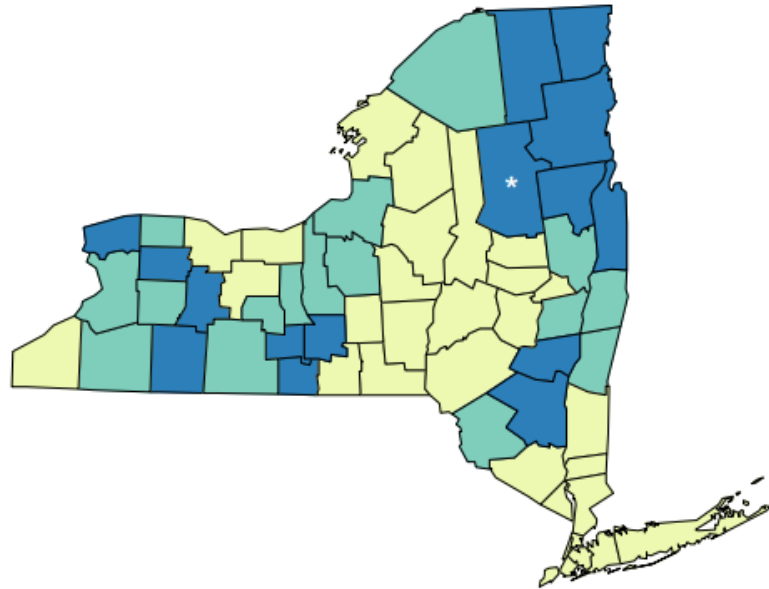
Confirmed blood lead levels 10+ug/dl in children <72 months/1,000



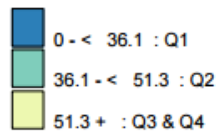
Incidence rate
Counties Are Shaded Based On Quartile Distribution
(* Fewer than 10 events in the numerator, therefore the rate is unstable)



Percent of children born in 2010 with lead screening by ages 9-17 months

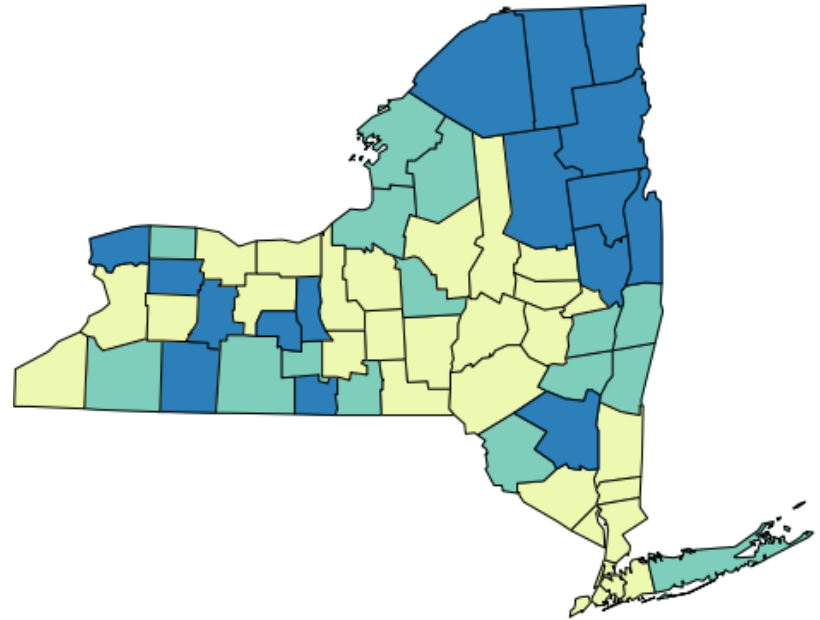


Percentage of children
Counties Are Shaded Based On Quartile Distribution
(* Fewer than 10 events in the numerator, therefore the rate is unstable)

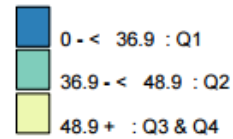


Source: 2010-2013 NYS Child Health Lead Poisoning Prevention Program Data as of May, 2015

Percent of children born in 2010 with lead screening by ages 18-35 months



Percentage of children
Counties Are Shaded Based On Quartile Distribution

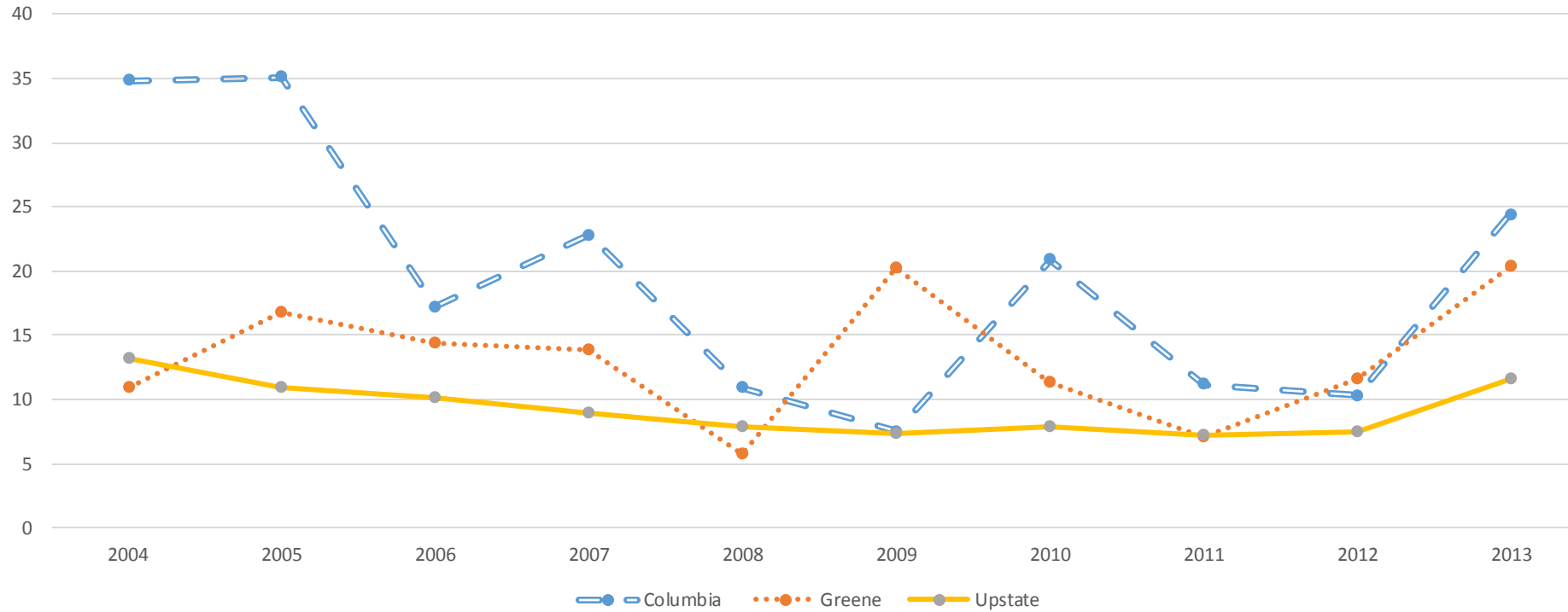


Source: 2010-2013 NYS Child Health Lead Poisoning Prevention Program Data as of May, 2015



Incidence Rate per 1,000 Among Children <72 Months of Age with a Confirmed Blood Lead Level $\geq 10\mu\text{g}/\text{dl}$ for New York State (excl. NYC), Columbia and Greene Counties, 2004-2013

Source: 2011-2013 NYS Child Health Lead Poisoning Prevention Program Data as of Ma

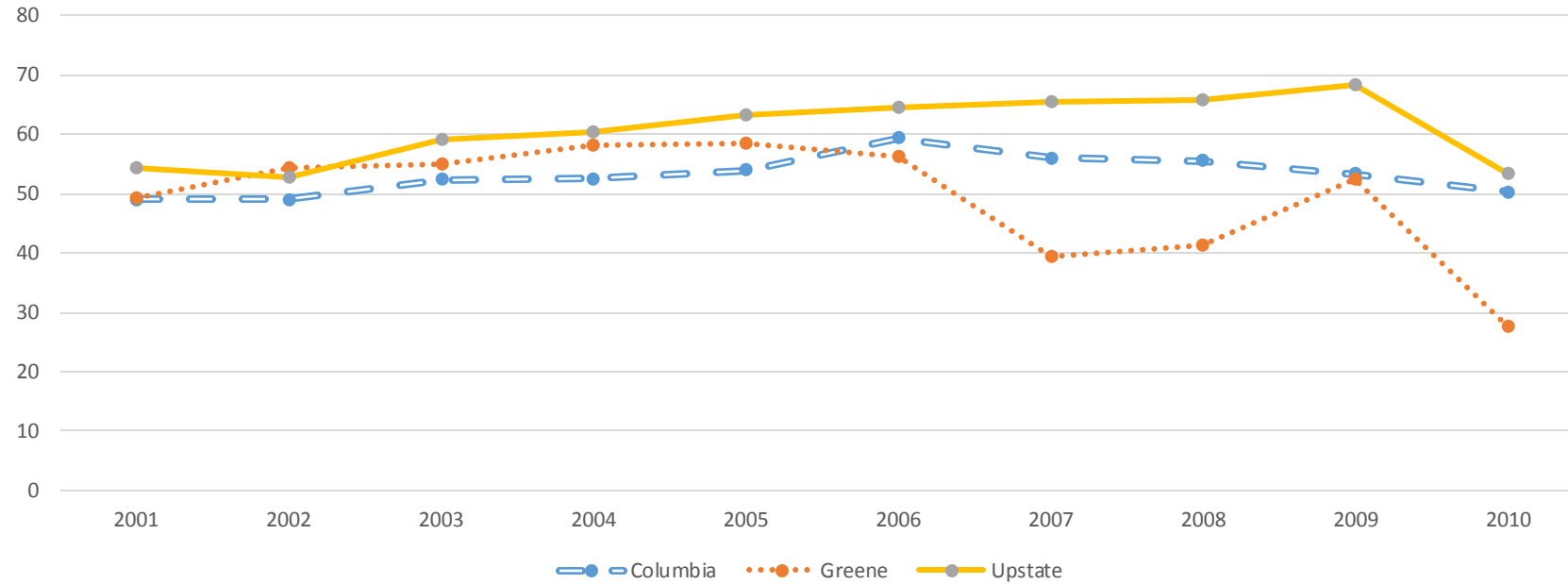


	2004	2005	2006	2007	2008	2009	2010	2011	2012	2013
Columbia	34.8	35.1	17.2	22.8	10.9	7.5	20.9	11.2	10.3	24.4
Greene	10.9	16.8	14.4	13.8	5.8	20.3	11.4	7.1	11.6	20.4
Upstate	13.2	11	10.1	9	7.9	7.3	7.9	7.2	7.5	11.6



Percentage of children born in 2001-2010 with a lead screening by ages 9-17 months for NYS (excl. NYC), Columbia and Greene, 2001-2010

Source: 2011-2013 NYS Child Health Lead Poisoning Prevention Program Data as of May, 2015

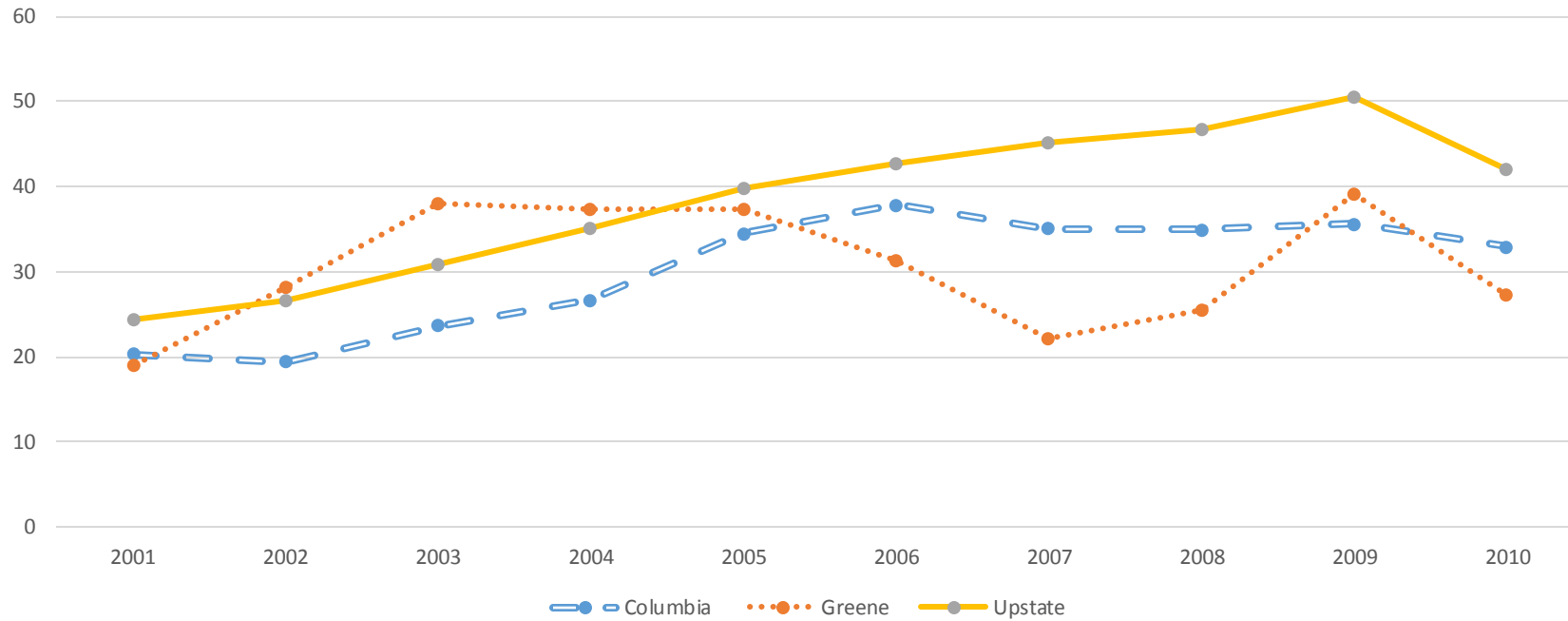


	2001	2002	2003	2004	2005	2006	2007	2008	2009	2010
Columbia	49.1	49	52.4	52.6	54	59.4	56	55.5	53.3	50.3
Greene	49.4	54.4	54.9	58.3	58.5	56.3	39.4	41.2	52.5	27.5
Upstate	54.3	52.7	59	60.3	63.3	64.6	65.4	65.8	68.3	53.5



Percentage of children born 2001-2010 with 2 lead screenings by ages 18-35 months for New York State (excl. NYC), Columbia and Greene Counties, 2001-2010

Source: 2011-2013 NYS Child Health Lead Poisoning Prevention Program Data as of May, 2015



	2001	2002	2003	2004	2005	2006	2007	2008	2009	2010
Columbia	20.3	19.4	23.6	26.7	34.5	37.9	35.1	34.9	35.6	32.9
Greene	19.1	28.2	38.1	37.4	37.3	31.3	22.2	25.5	39.1	27.3
Upstate	24.4	26.7	30.8	35	39.7	42.8	45.1	46.8	50.6	42.1

Childhood Lead Summary



Annually, the two counties have:

- 33 children <72 months of age had a confirmed blood lead level of 10+ $\mu\text{g}/\text{dl}$
- 540 children (born in 2010) who did not have a lead screening, 9-17 months of age
- 734 children (born in 2010) who did not have 2 lead screenings, 18-35 months of age

Childhood Lead Summary



- Both counties have significantly higher confirmed blood lead levels 10+ $\mu\text{g}/\text{dl}$ in children <72 months/1,000 than upstate NY.
- Lead screening rates show a marked drop-off with the 2010 birth cohort, and an increase in elevated blood lead levels in 2013
- Both counties have lower or significantly lower % of children with lead screenings at ages 0-8 months, 9-17 months, and 18-35 months than that of NYS, excluding NYC.

UNINTENDED PREGNANCY IN COLUMBIA & GREENE COUNTIES



The Effect of Unintended Pregnancy on the Population

Source: 2011 Vital Statistics Data as of December, 2012



	Columbia	Greene	Capital Region
Number of Adolescent Pregnancies (ages 15-17) per year (2013)	10	10	274
Number of Unintended Pregnancies among live births per year (2013)	148	122	2,342

Unintended Pregnancy Indicators and Significance Compared to New York State (excl. NYC)

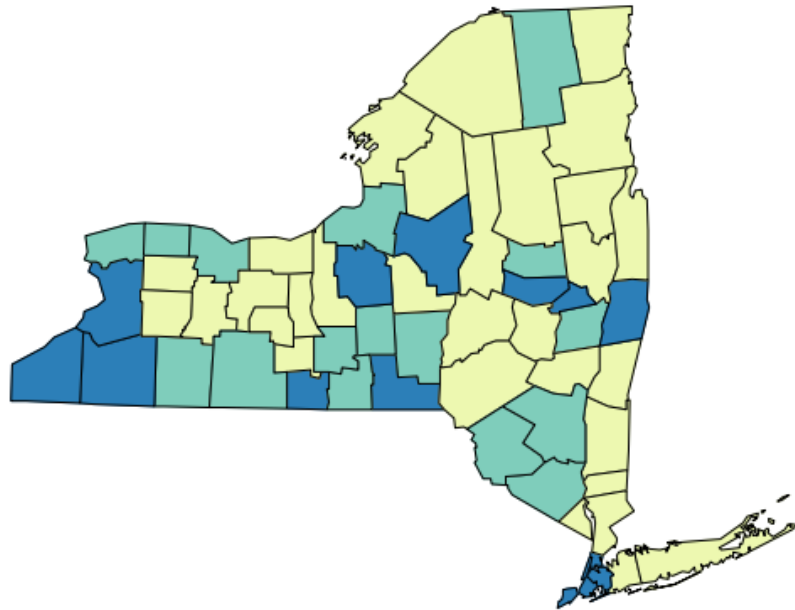
2011-2013 Vital Statistics Data as of February, 2015



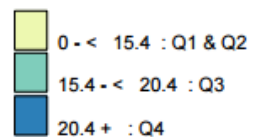
	Columbia		Greene		Capital Region		Upstate
Adolescent Pregnancy rate (ages 15-17) per 1,000 females (2011-2013)	9.7	Significantly Lower	12.2	Lower	18.0	Significantly Higher	13.0
% Unintended Pregnancies among live births (2011-2013)	34.7	Significantly Higher	32.9	Significantly Higher	27.9	Slightly Higher	27.3

Adolescent Pregnancy rate (ages 15-17) per 1,000 females, 2011-2013

% Unintended Pregnancies among live births, 2013

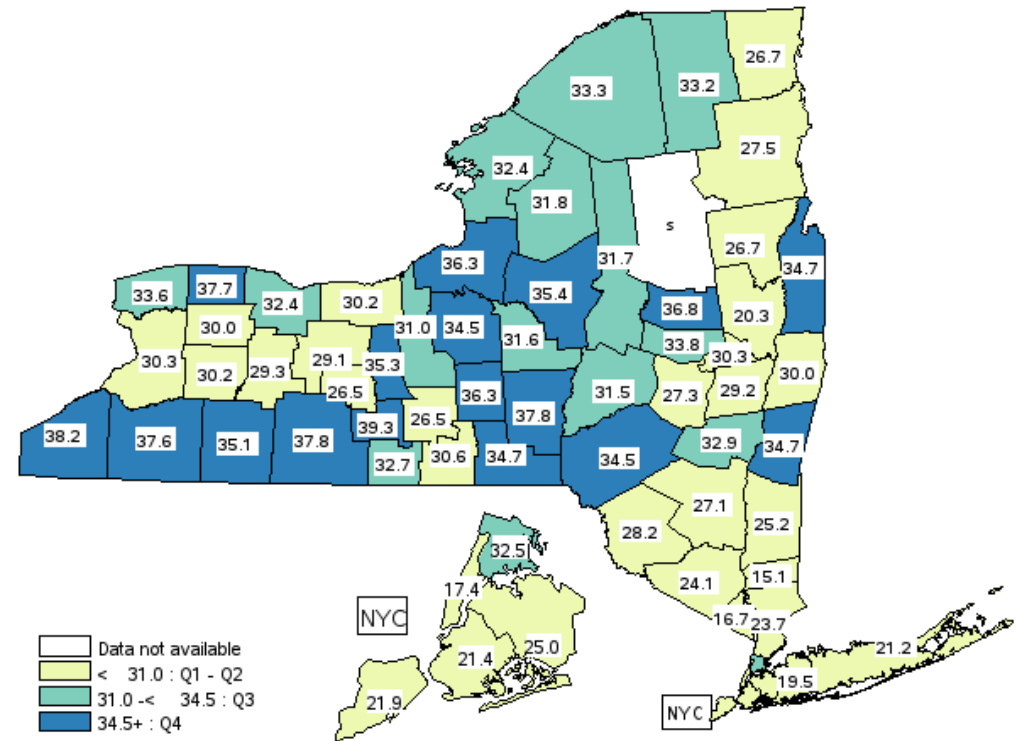


Pregnancy rate
Counties Are Shaded Based On Quartile Distribution



Source: 2011-2013 Vital Statistics Data as of February, 2015

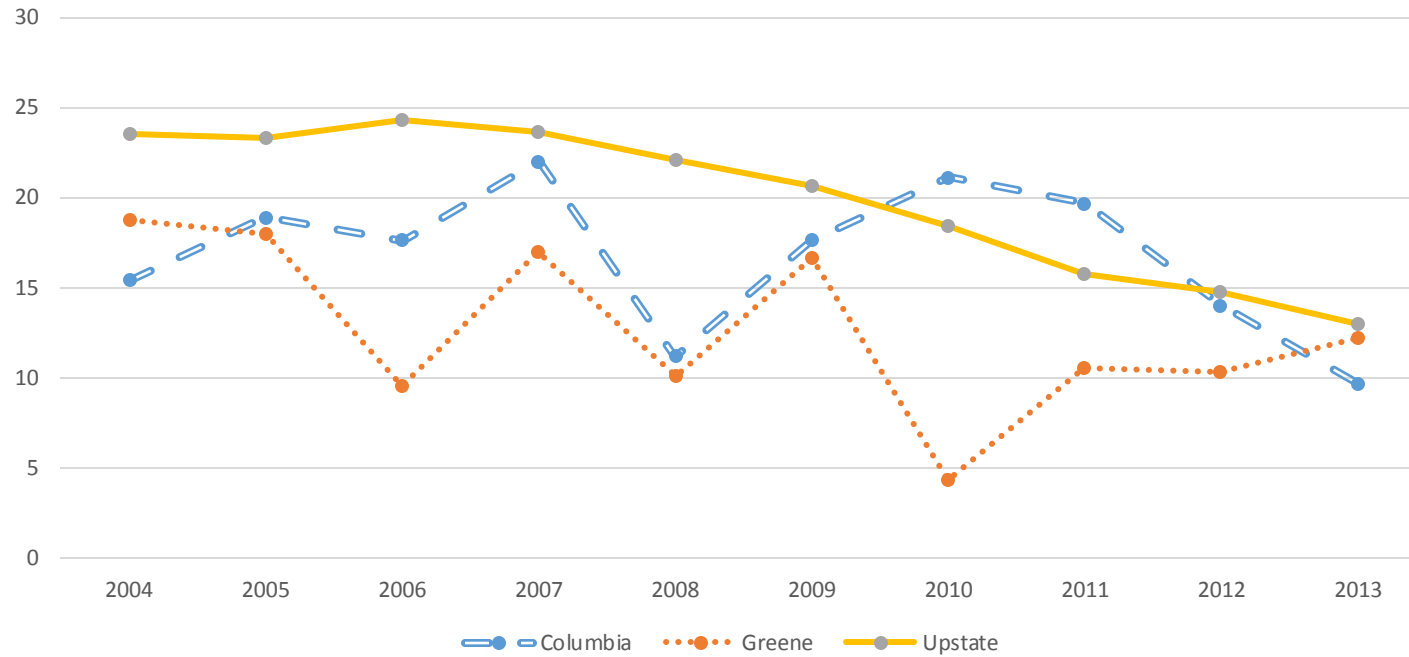
Data Source: Vital Records data as of April 2015





Adolescent Pregnancy Rate per 1,000 Females (Ages 15-17 years) for New York State (excl. NYC), Columbia and Greene Counties

2011-2013 Vital Statistics Data as of February, 2015



	2004	2005	2006	2007	2008	2009	2010	2011	2012	2013
Columbia	15.4	18.9	17.6	22	11.2	17.6	21.1	19.7	14	9.7
Greene	18.8	18	9.6	17	10.1	16.6	4.3	10.6	10.3	12.2
Upstate	23.5	23.3	24.3	23.6	22.1	20.6	18.4	15.8	14.8	13



EQUITY

Adolescent Pregnancy (ages 15-17) per 1,000 females by Race/Ethnicity, 2011-2013



	Columbia	Greene	Capital Region	Upstate
Ratio of black non-Hispanics to white non-Hispanics	2.21	S	3.92	3.98
<i>Rates*</i>	<i>(26.3*/11.9)</i>	<i>(s/10.8)</i>	<i>(43.4/11.1)</i>	<i>(34.3/8.6)</i>
Ratio of Hispanics to white non-Hispanics	1.88	0.49	3.96	2.92
<i>Rates*</i>	<i>(22.3*/11.9)</i>	<i>(5.3*/10.8)</i>	<i>(43.9/11.1)</i>	<i>(25.1/8.6)</i>

s: Data do not meet reporting criteria.

* Fewer than 10 events in the numerator, therefore the rate is unstable

Ratios of Unintended Pregnancies among live births by Race/Ethnicity and SES, 2013



	Columbia	Greene	Capital Region	Upstate
Ratio of Black non-Hispanics to White non-Hispanics	S	S	2.17	2.13
<i>Rates*</i>	(s/33.5)	(s/32.0)	(50.8/23.4)	(48.6/22.8)
Ratio of Hispanics to White non-Hispanics	S	S	1.79	1.47
<i>Rates*</i>	(s/33.5)	(s/32.0)	(41.8/23.4)	(33.6/22.8)
Ratio of Medicaid births to non-Medicaid births	1.56	1.71	1.90	1.90
<i>Rates*</i>	(48./31.0)	(47.1/27.5)	(45.8/24.1)	(40.6/21.4)

s: Data do not meet reporting criteria.

* Fewer than 10 events in the numerator, therefore the rate is unstable

Top Neighborhood Rates



Adolescent Pregnancy Rate per 1,000 women aged 15-19 years, 2011-2013

Columbia County (27.2/1,000)

- Hudson 47.2%
- Pine Plains 37.0%
- Germantown 30.3%

Upstate- 28.6

Greene County (19.6/1,000)

- Cairo/Durham 55.6%
- Catskill 28.6%
- Hunter/Tannersville 9.8%

Unintended Pregnancy Summary



The two counties annually have:

- 20 pregnancies to adolescent women ages 15-17
- 270 unintended pregnancies among live births per year

Unintended Pregnancy Summary



- Columbia and Greene counties' adolescent pregnancy rates were significantly lower than NYS, excluding NYC; unintended pregnancies among live births were significantly higher than NYS, excluding NYC.
- In both counties, among live births, Medicaid births are about 1.5 to 1.7 times as likely to have been from unintended pregnancies in comparison to non-Medicaid births



PRENATAL CARE IN COLUMBIA & GREENE COUNTIES

The Effect of Prenatal Care on the Population

2011-2013 Vital Statistics Data as of February, 2015



	Columbia	Greene	Capital Region
Number of births without early (1st trimester) prenatal care (PNC) per year	154	113	2,154
Number of births with late or no (3rd trimester) PNC per year	36	24	416
Number of births without adequate PNC (Kotelchuck) per year	181	120	2,603

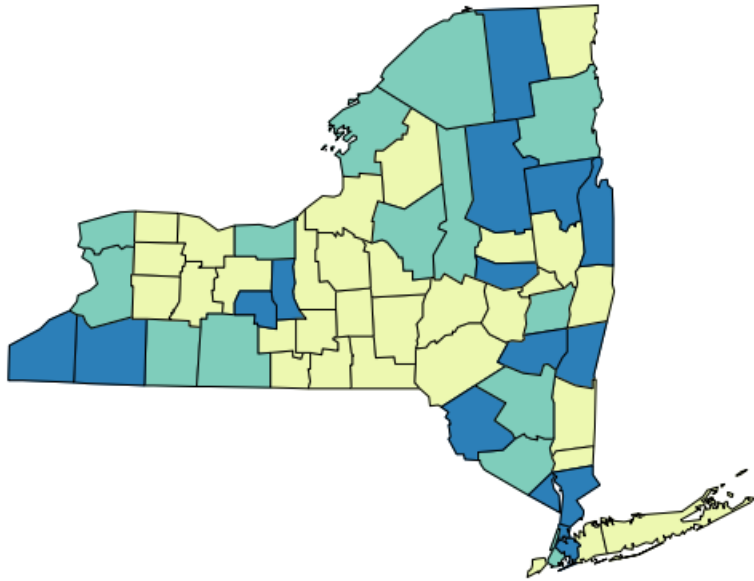
Prenatal Care Indicators and Significance Compared to New York State (excl. NYC)

2011-2013 Vital Statistics Data as of February, 2015

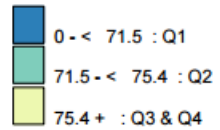


	Columbia		Greene		Capital Region		Upstate
% of births with early (1 st trimester) prenatal care	70.5	Significantly Lower	69.4	Significantly Lower	75.4	Slightly Lower	76.0
% of births with late (3 rd trimester) or no prenatal care	5.4	Significantly Higher	5.8	Significantly Higher	4.8	Higher	4.1
% of births with adequate prenatal care (Kotelchuck)	63.6	Significantly Lower	65.4	Significantly Lower	70.1	Higher	68.6

Percentage of births with early PNC, 2011-2013

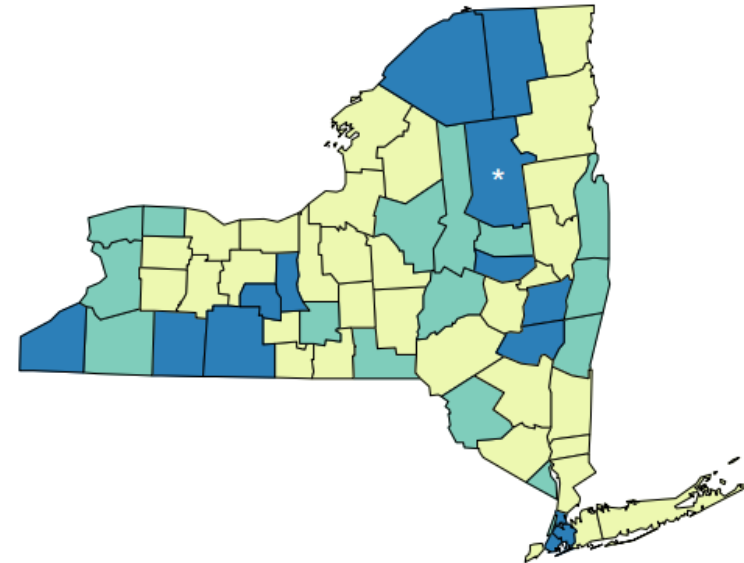


Percentage of births
Counties Are Shaded Based On Quartile Distribution

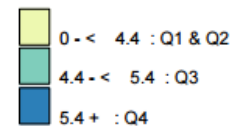


Source: 2011-2013 Vital Statistics Data as of February, 2015

Percentage of births with late or no PNC, 2011-2013

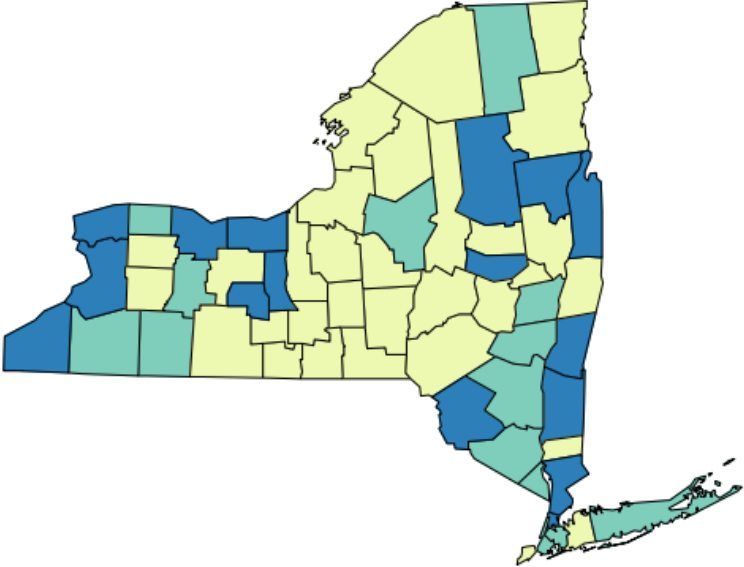


Percentage of births
Counties Are Shaded Based On Quartile Distribution
(* Fewer than 10 events in the numerator, therefore the rate is unstable)



Source: 2011-2013 Vital Statistics Data as of February, 2015

Percentage of births with adequate PNC (Kotelchuck), 2011-2013



Percentage of births
Counties Are Shaded Based On Quartile Distribution

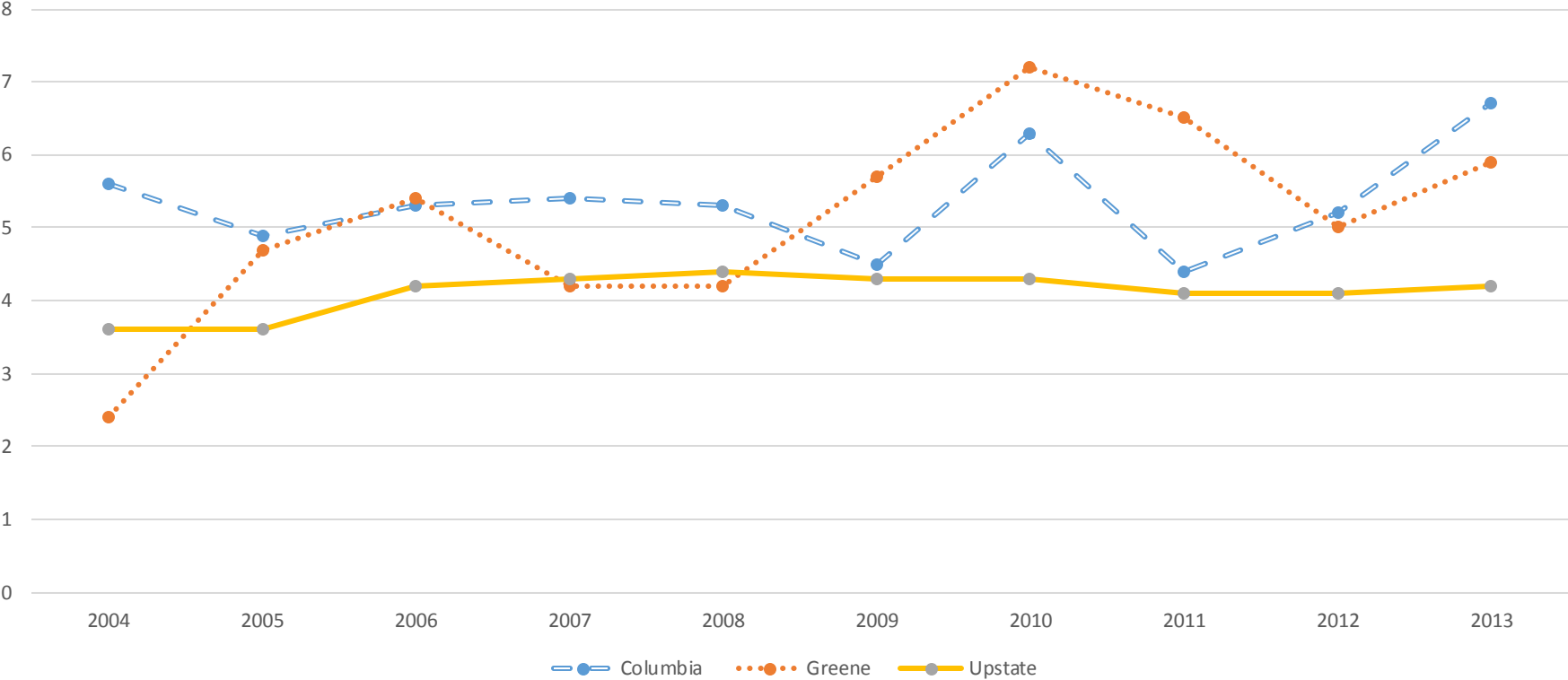
- 0 - < 64.2 : Q1
- 64.2 - < 69.7 : Q2
- 69.7 + : Q3 & Q4

Source: 2011-2013 Vital Statistics Data as of February, 2015



Percent of births with late or no prenatal care for New York State (excl. NYC), Columbia and Greene Counties, 2004-2013

Source: 2011-2013 Vital Statistics Data as of February, 2015



	2004	2005	2006	2007	2008	2009	2010	2011	2012	2013
Columbia	5.6	4.9	5.3	5.4	5.3	4.5	6.3	4.4	5.2	6.7
Greene	2.4	4.7	5.4	4.2	4.2	5.7	7.2	6.5	5.0	5.9
Upstate	3.6	3.6	4.2	4.3	4.4	4.3	4.3	4.1	4.1	4.2



EQUITY

Prenatal Care Indicators by Race/Ethnicity

County Health Indicators by Race/Ethnicity, 2010-2012



% Early PNC	Columbia	Greene	Upstate
White non-Hispanic	69.9	69.3	79.2
Black non-Hispanic	59.3	S	63.5
Hispanic	58.4	65.9	66.5

% Adequate PNC	Columbia	Greene	Upstate
White non-Hispanic	62.1	64.2	72.7
Black non-Hispanic	46.7	S	54.1
Hispanic	54.2	57.1	59.5

S: Data do not meet reporting criteria

*: Fewer than 10 events in the numerator, therefore the rate or percent is unstable

Top Neighborhood Rates

Percent Late or No Prenatal Care

- Columbia (5.3/1,000)
 - Hudson 6.3%
 - Germantown 6.3%
 - Chatham 5.2%
- Upstate- 4.1%
- Greene (5.3/1,000)
 - Windham/Ashland/Jewett 10.1%
 - Cairo/Durham 7.0%
 - Greenville 5.0%



Prenatal Care Summary



Annually, the two counties have:

- 267 births without early (1st trimester) prenatal care
- 60 births with late (3rd trimester) or no prenatal care
- 301 births without adequate (Kotelchuck) prenatal care

Prenatal Care Summary



- The percentage of births with early prenatal care is slightly lower for both Columbia and Greene counties.
- The percentage of late or no prenatal care is significantly higher for both Columbia and Greene counties in comparison to upstate NY.
- The percentage of live births with adequate prenatal care is significantly lower in both Columbia and Greene counties than in comparison to upstate NY.
- Columbia and Greene counties have shown an increasing trend in late or no prenatal care since 2011.
- For Columbia county, Black non-Hispanic and Hispanic populations had significantly lower rates of early prenatal care and adequate prenatal care compared to the non-Hispanic white population.



LOW BIRTHWEIGHT AND PREMATURE BIRTHS IN COLUMBIA & GREENE COUNTIES

The Effect of Premature Birth and Low Birthweight on the Population

Source: 2011-2013 Vital Records data, as of April 2015



	Columbia	Greene	Capital Region
Number of Preterm births (2013)	57	38	1,042
Number of Low birthweight births (2013)	33	26	727

Premature Birth and Low Birthweight Compared to NYS (excl. NYC)

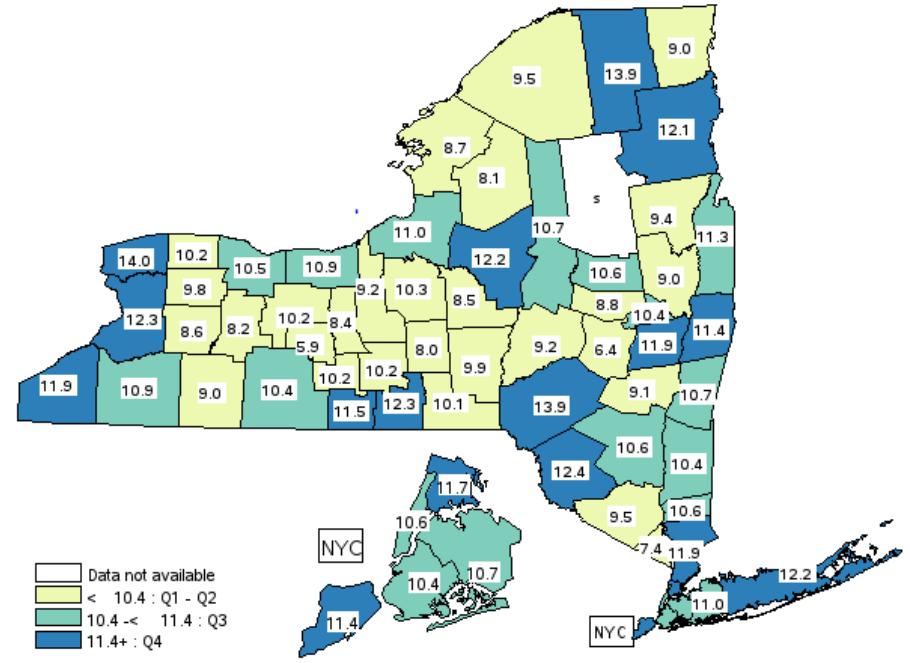
Source: 2011-2013 Vital Records data, as of April 2015



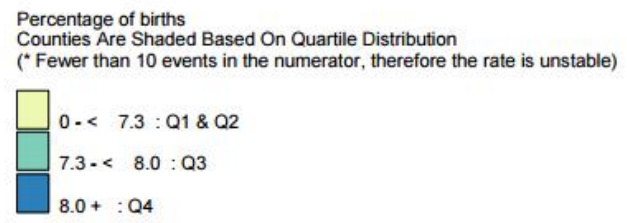
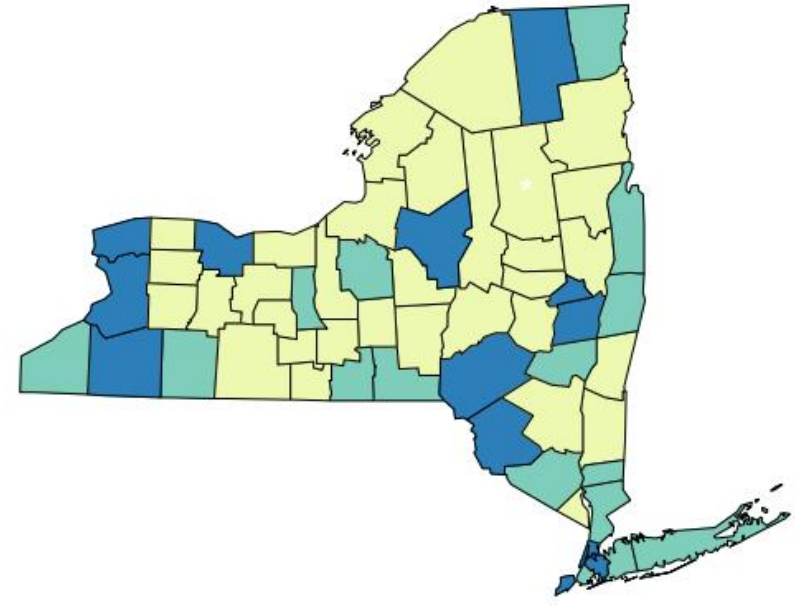
	Columbia		Greene		Capital Region		Upstate
% of Preterm births (2013)	10.7	Slightly Lower	9.1	Significantly Lower	10.7	Slightly Lower	10.9
% Low birthweight births (2011-2013)	7.2	Slightly Lower	7.7	Slightly Higher	7.9	Slightly Higher	7.6

Percentage of Preterm Births, 2013

Data Source: Vital Records data as of April 2015



Percentage of Low Birthweight Births, 2011-2013

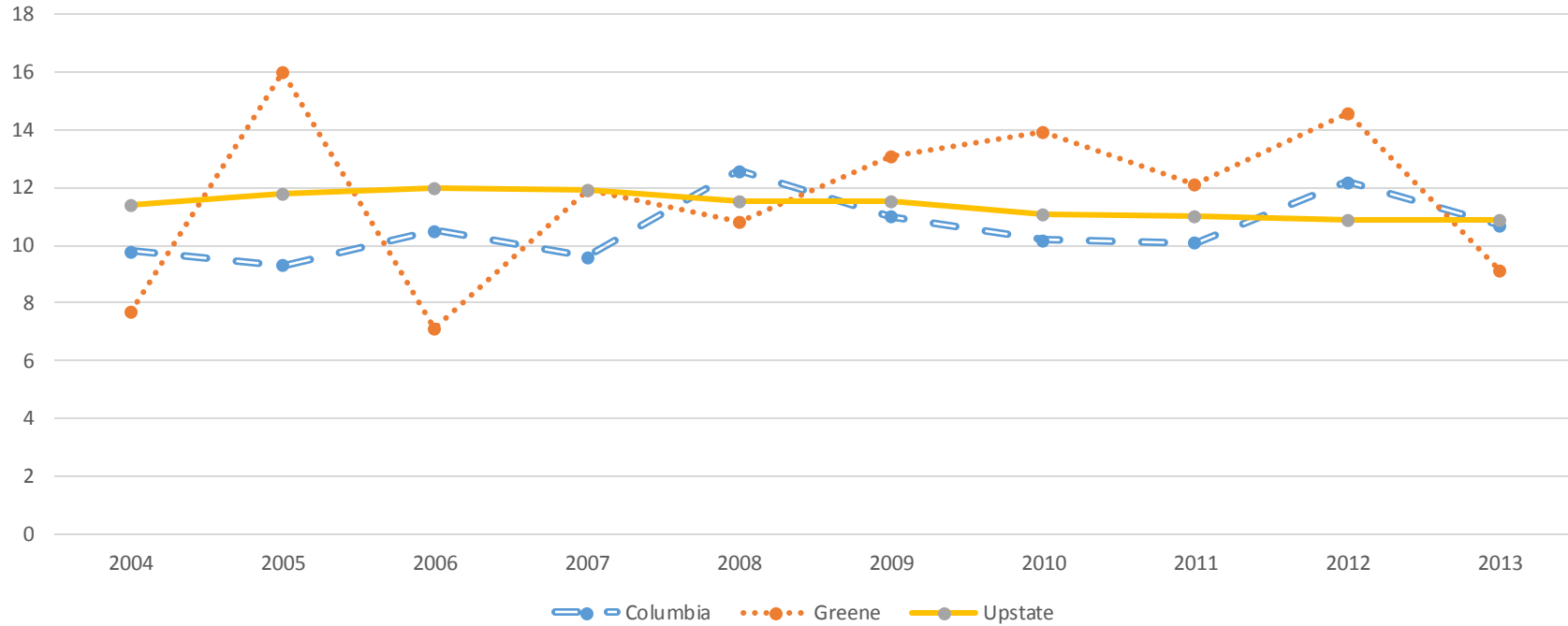


Source: 2011-2013 Vital Statistics Data as of February, 2015



Percentage of Preterm Births (<less than 37 weeks of Gestation) in NYS (excl. NYC), Albany and Renssalaer Counties, 2004-2013

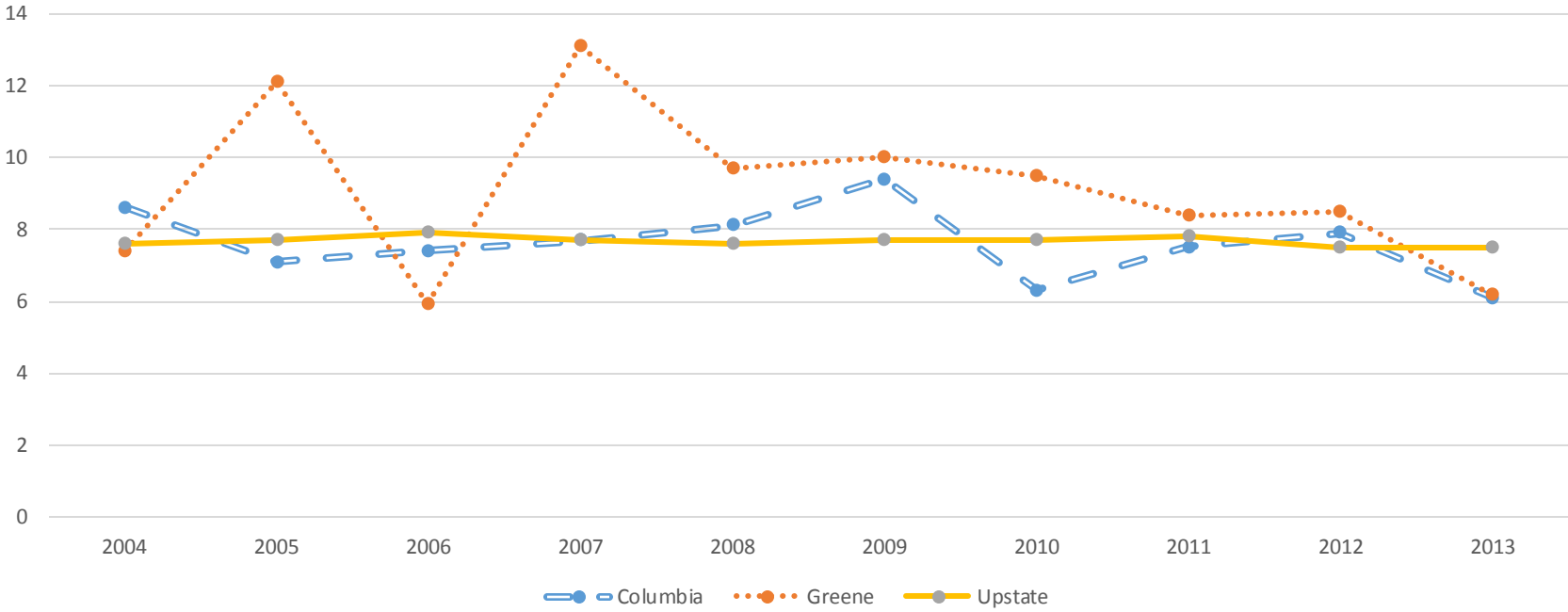
Source: 2011-2013 Vital Statistics Data as of February, 2015



	2004	2005	2006	2007	2008	2009	2010	2011	2012	2013
Columbia	9.8	9.3	10.5	9.6	12.6	11	10.2	10.1	12.2	10.7
Greene	7.7	16	7.1	11.9	10.8	13.1	13.9	12.1	14.6	9.1
Upstate	11.4	11.8	12	11.9	11.5	11.5	11.1	11	10.9	10.9

Percentage of Low Birthweight Births in NYS (excl. NYC), Albany and Renssalaer Counties, 2004-2013

Source: 2011-2013 Vital Statistics Data as of February, 2015



	2004	2005	2006	2007	2008	2009	2010	2011	2012	2013
Columbia	8.6	7.1	7.4	7.7	8.1	9.4	6.3	7.5	7.9	6.1
Greene	7.4	12.1	5.9	13.1	9.7	10	9.5	8.4	8.5	6.2
Upstate	7.6	7.7	7.9	7.7	7.6	7.7	7.7	7.8	7.5	7.5

Percentages of Preterm Births (<37 weeks) by Race/Ethnicity and SES

2011-2013 Vital Statistics Data as of February, 2015



	Columbia	Greene	Capital Region	Upstate
% of Black non-Hispanics	19.6	S	15.1	15.4
% of White non-Hispanics	10.5	13.8	10.3	10.0
% of Hispanics	9.6	10.6	10.5	11.9
% of Medicaid Births	11.5	10.9	10.8	11.8
% of Non-Medicaid Births	13.6	11.5	10.9	10.5

S: Data do not meet reporting criteria

*: Fewer than 10 events in the numerator, therefore the rate or percent is unstable

Percentages of Low Birthweight Births (<2,500 grams) by Race/Ethnicity, 2010-2012



	Columbia	Greene	Upstate
% of Black non-Hispanic	13.0	S	13.1
% White non-Hispanic	6.9	8.9	6.9
% of Hispanic	5.8	4.3*	7.3

S: Data do not meet reporting criteria

*: Fewer than 10 events in the numerator, therefore the rate or percent is unstable

Low Birthweight and Premature Births Summary

- Annually, the two counties have 95 preterm births and 59 low birthweight births.
- Columbia county had slightly lower percentages of preterm births as well as of low birthweight births in comparison to NYS, excluding NYC.
- Columbia county is in the 3rd Risk quartile for preterm births, while Greene county is in the 3rd Risk quartile for low birthweight births.
- Columbia and Greene counties have a decreasing trend for both % of preterm births and % of low birthweight births, in comparison NYS, excluding NYC
- When comparing prematurity rates, the Medicaid population had higher rates compared to non-Medicaid population.

